

XCMG North America Corporation
305 Equipment Ct. Suite A
Lawrenceville, GA 30043
+1 725-605-2777
letsgo@xcmgusa.com
xcmg-usa.com



XGS46J

MOBILE ELEVATING WORK PLATFORM

Comply with ANSI/CSA



XGS46J

MOBILE ELEVATING WORK PLATFORM

FEATURES

MEASUREMENTS

16 m (53') working height
Without Limited: 600 lb (272 kg) capacity

PRODUCTIVITY

1.83 m x 0.76 m (6' x 2' 6") steel platform
4WD
Solid tire
Self-leveling platform
Hydraulic platform rotation
Fully proportional controls
Drive enable
Horn
Hour meter
Tilt alarm
Lift and lower alarm
360° continuous turntable rotation
Lockable turntable covers
Zero tailswing
Engine gauge package
Alarm package
Dual flashing beacons

POWER

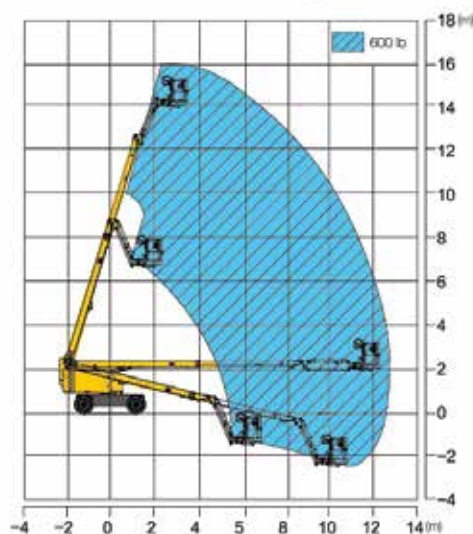
Kubota
2,700 rpm/36.8 kW

HIGHLIGHT

- Multi-directional precise positioning up, down and across functions as well as excellent stretch functions.
- Electrical system adopts a distributed PLC control technology, adaptive proportional valve control method, make the product environment adaptability with lead.
- 360° continuous turntable rotation.
- Compact and flexible, convenient for container transportation.

OPTIONS

Power supply to platform
Compressed air line to platform
Anti-impact bracket for platform
Rough terrain foam-filled tires



MAIN PARAMETER

Item	Imperial	Metric
Overall dimensions (stowed)	3 ft x 7 ft 7 in x 8 ft 1 in	9.4 m x 2.32 m x 2.48 m
Overall dimensions (transportation)	29 ft 10 in x 7 ft 7 in x 8 ft 1 in	9.1 m x 2.32 m x 2.48 m
Platform size	6 ft x 2 ft 6 in x 3 ft 9 in	1.83 m x 0.76 m x 1.15 m
Wheelbase	7 ft 9 in	2.36 m
Minimum ground clearance	11.81 in	300 mm
Maximum working height	53 ft	16 m
Maximum platform height	46 ft	14 m
Maximum working range	42 ft	12.7 m
Lift capacity	600 lb ; 600 lb/772 lb (option)	272 kg ; 272 kg/350 kg (option)
Boom luffing range	-14°~ 73°	-14°~ 73°
Jib luffing range	-65°~ 70°	65°~ 70°
Turntable rotation	360° continuous rotation	360° continuous rotation
Platform rotation	160°	160°
Tailswing	3 ft 8 in	1.12 m
Minimum drive speed	3.73 mph	6 km/h
Minimum turning radius (outside)	15 ft 5 in	4.7 m
Weight	17,747 lb	8,050 kg
Gradeability	45%	45%
Engine type	Kubota	Kubota
Engine rated power	49.3 hp/2,700 rpm	36.8 kW/2,700 rpm
Tires	32x12-20/7.5	32x12-20/7.5