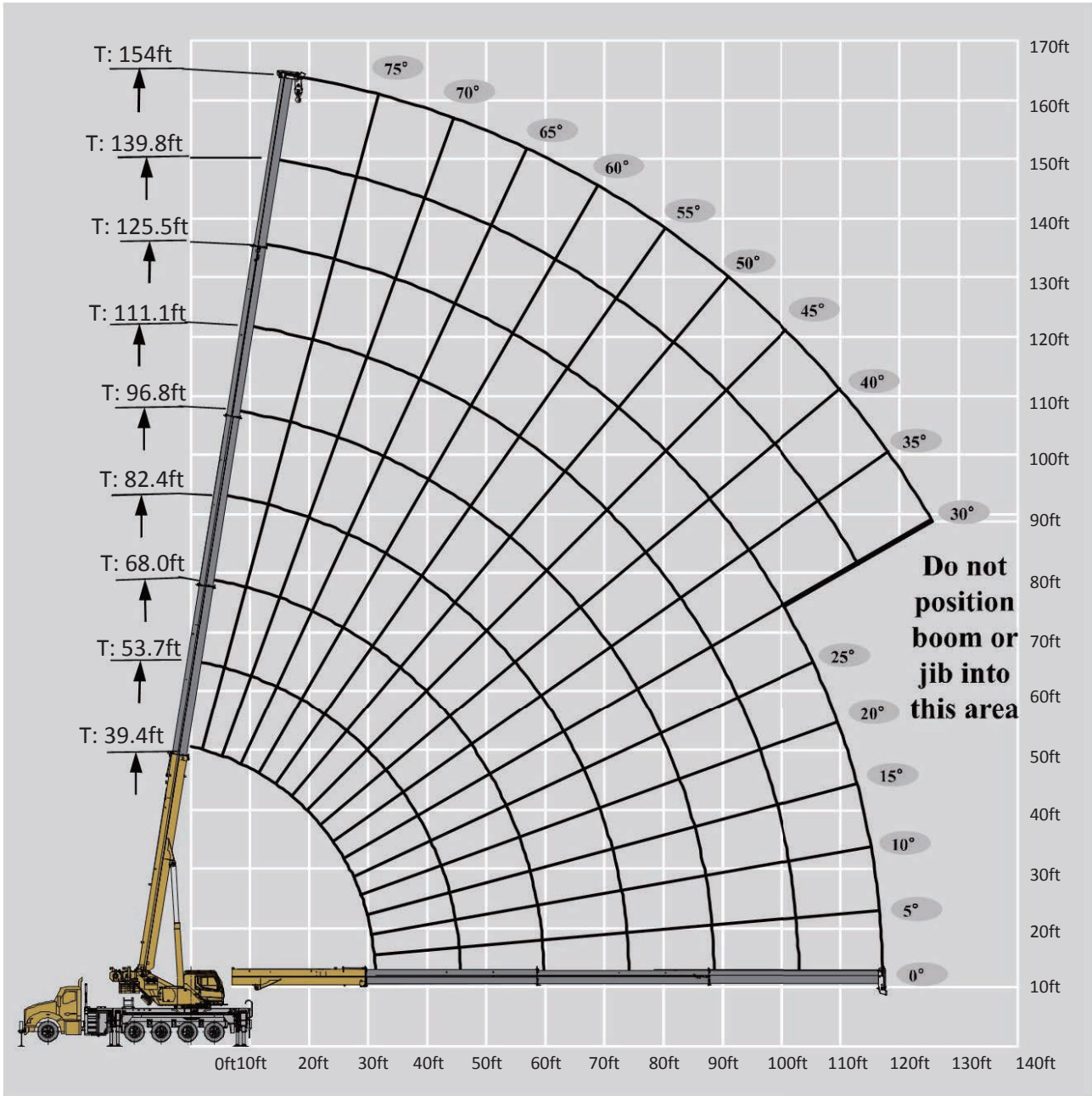


BOOM	BOOM + ONE JIB SECTION	BOOM + TWO JIB SECTIONS
T: 39.4 ft~154 ft	T: 154 ft J: 30.5 ft	T: 154 ft J: 53.5 ft



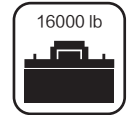
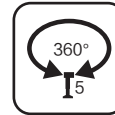
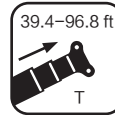
WORKING RANGE DIAGRAM

BOOM



Less Flex, More Lift

T 39.4~96.8 ft
ASME B30.5 85% Units:lb

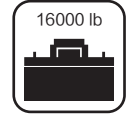
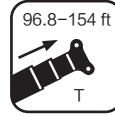


	39.4ft	53.7ft	53.7ft	68ft	68ft	68ft	82.4ft	82.4ft	82.4ft	96.8ft	96.8ft	
5.0	120,000											5.0
6.6	110,220											6.6
8.2	101,410											8.2
9.8	92,590											9.8
11.5	88,180	52,910	70,540									11.5
13.1	77,160	52,910	68,780	50,040	50,700	45,850						13.1
14.8	70,540	52,910	63,710	50,040	50,700	45,850	45,850	42,320	43,870			14.8
16.4	69,220	52,910	58,640	50,040	50,700	45,190	45,850	40,560	41,000			16.4
19.7	59,520	52,910	50,920	46,510	50,700	39,680	43,200	37,250	35,930	39,020	26,450	19.7
23.0	46,510	52,910	45,410	40,780	50,700	34,610	37,910	34,390	31,960	34,830	23,580	23.0
26.2		47,170	40,340	36,370	48,050	30,860	33,730	31,960	28,210	31,960	21,820	26.2
29.5		38,800	35,710	33,280	39,680	27,990	30,860	30,200	25,350	29,100	20,060	29.5
32.8		32,620	29,760	30,420	33,500	25,130	27,990	28,430	22,920	26,230	18,730	32.8
39.4				22,920	25,130	20,720	23,580	24,470	18,950	22,260	16,310	39.4
45.9				17,630	19,620	15,430	18,510	20,060	15,870	18,730	14,550	45.9
52.5							14,770	16,310	13,000	15,210	12,560	52.5
59.1							11,900	13,440	10,140	12,340	11,240	59.1
65.6										10,140	10,140	65.6
72.2										8,370	9,470	72.2
Boom angle 0°	23,140	13,440	11,680	7,490	8,810	6,170	5,290	6,170	3,960	3,740	4,620	
	0	0%	50%	50%	0	100%	50%	0	100%	50%	0	
	0	16.70%	0%	16.70%	33.30%	0	33.30%	50%	16.70%	50%	66.70%	
	0	16.70%	0%	16.70%	33.30%	0	33.30%	50%	16.70%	50%	66.70%	
	0	16.70%	0%	16.70%	33.30%	0	33.30%	50%	16.70%	50%	66.70%	

LOAD CHARTS

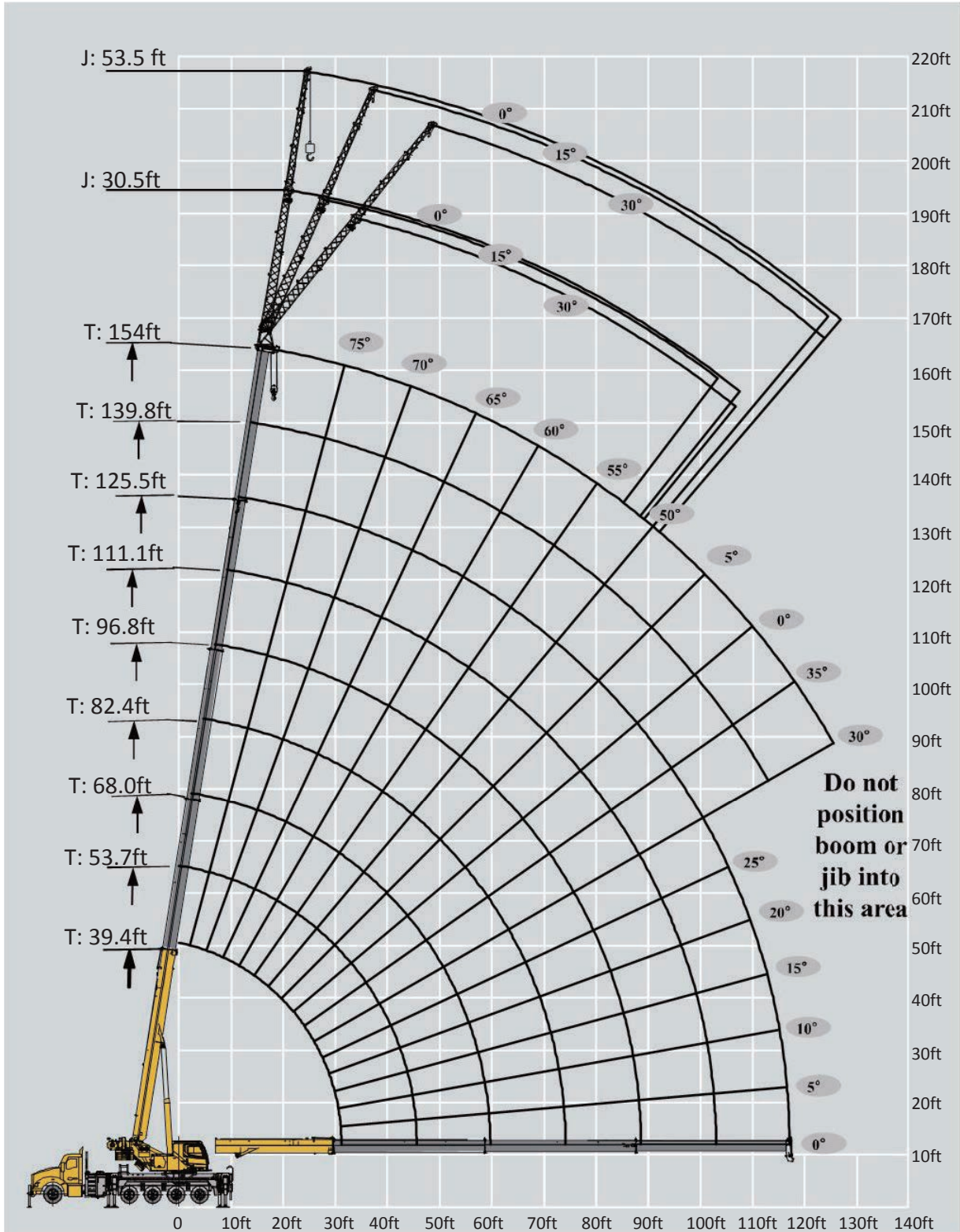
T 96.8~154 ft

ASME B30.5 85% Units:lb



	96.8ft	111.1ft	111.1ft	111.1ft	125.5ft	125.5ft	125.5ft	139.8ft	139.8ft	154ft	
19.7	32,840										19.7
23.0	28,880										23.0
26.2	26,010	22,700	18,950	23,360							26.2
29.5	23,800	21,380	17,630	21,600	17,850	15,650	18,510				29.5
32.8	22,040	20,280	16,530	19,840	16,970	14,320	17,190	14,320	14,770	11,460	32.8
39.4	18,070	17,850	14,320	16,970	15,210	13,000	14,770	13,000	13,000	11,020	39.4
45.9	15,210	15,650	12,780	14,100	13,440	11,240	13,220	11,680	11,680	9,920	45.9
52.5	13,000	14,100	11,240	12,120	12,340	10,140	11,900	10,580	10,360	9,030	52.5
59.1	11,020	12,780	9,920	10,800	10,580	9,030	10,140	9,470	9,250	8,150	59.1
65.6	8,810	10,580	8,810	9,250	9,700	8,150	8,810	8,150	7,930	7,270	65.6
72.2	7,050	8,810	8,150	7,710	8,590	7,490	7,490	7,490	7,270	6,390	72.2
78.7		7,270	7,270	6,170	7,710	6,830	6,610	6,830	6,390	5,730	78.7
85.3		6,170	6,610	5,070	6,390	6,170	5,510	6,170	5,730	4,850	85.3
91.9					5,510	5,510	4,400	5,510	4,620	4,620	91.9
98.4					4,620	5,290	3,520	4,850	3,740	3,960	98.4
105.0								3,960	3,080	3,300	105.0
111.5								3,300	2,420	2,640	111.5
118.1								2,640	1,760	1,980	118.1
124.7										1,540	124.7
131.2										1,100	131.2
Boom angle 0°	2,640	2,640	3,300	1,760	1,760	2,200	1,100				
	100%	50%	0	100%	50%	0	100%	50%	100%	100%	
	33.30%	66.70%	83.30%	50%	83.30%	100%	66.70%	100%	83.30%	100%	
	33.30%	66.70%	83.30%	50%	83.30%	100%	66.70%	100%	83.30%	100%	

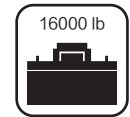
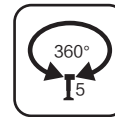
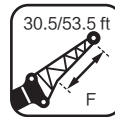
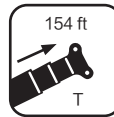
BOOM





T 154 ft

ASME B30.5 85%

Units:lb



	154 ft			154 ft			
	30.5 ft			53.5 ft			
	0°	15°	30°	0°	15°	30°	
45.9	7,050			5,290			45.9
52.5	7,050	7,050		5,290			52.5
59.1	7,050	6,390	4,400	5,070	3,300		59.1
65.6	5,730	5,510	4,180	4,620	3,080		65.6
72.2	4,850	4,850	3,960	4,400	3,080	1,980	72.2
78.7	4,400	4,400	3,960	3,960	2,640	1,980	78.7
85.3	3,960	3,740	3,740	3,740	2,640	1,760	85.3
91.9	3,300	3,300	3,520	3,080	2,420	1,540	91.9
98.4	2,860	2,860	2,860	2,640	2,640	1,540	98.4
105.0	2,420	2,420	2,420	2,200	2,420	1,540	105.0
111.5	2,200	2,200	1,980	1,980	2,200	1,320	111.5
118.1	1,760	1,760	1,760	1,760	1,760		118.1
124.7				1,540	1,540		124.7
131.2					1,540		131.2
137.8					1,100		137.8