



SOLID
TO SUCCEED

XC918U

COMPACT WHEEL LOADER



Operating weight
Engine rated power
Rated load
Bucket capacity

6300kg /13889.1lb
53.7kW /72.0hp
1800kg /3968.3lb
1.0m³ /1.3yd³

XC918U

WHEEL LOADER

The XC918U is XCMG's latest hydrostatic model, designed for smooth operation, high efficiency, and easy maintenance. Engineered for agility and durability, it excels in municipal construction, agriculture, forestry and more.





Advanced Technology

- Hydrostatic transmission technology
- Real-time traveling motor control
- Complemented by inching brake



Flexibility and Versatility

- Short-tail design (lower steering radius)
- Center articulated oscillation structure
- Standard third function quick coupler
- Various optional attachments



High Reliability

- CAE simulation analysis
- Heavy-duty frame structure
- Reinforced drive axle



Safe Design

- ROPS & FOPS cab
- Emergency brake button
- Hydraulic lock
(lifting /tilting /quick coupler)



Easy Maintenance

- Front-flip hood
- Side-flip cab
- Centralized pressure interface



Comfortable Operation

- Air-suspension seat (optional)
- FNR integrated joystick
- Adjustable seat/ steering column

I HIGH EFFICIENCY



Hydrostatic transmission technology provides precise control over power distribution, resulting in smoother and more efficient performance. The lightweight design is enhanced by an inching brake, which improves braking efficiency and conserves energy.

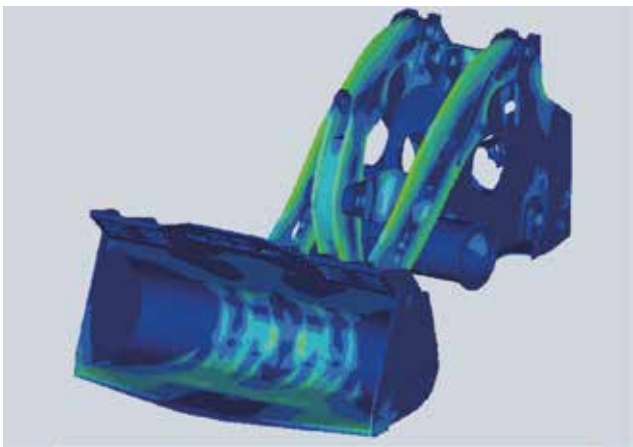


The Yanmar engine delivers strong performance, with high torque reserves, excellent fuel efficiency, and low consumption. Its optimized speed control enhances fuel economy while extending engine life.

High Quality For Great Performance

The XC918U is powered by a high-performance Yanmar engine that delivers strong torque with low fuel consumption. Its optimized speed control improves fuel efficiency while extending engine life.

The electronically controlled hydrostatic transmission ensures seamless shifting between speeds, eliminating shift impact for a smoother and more efficient operation.



The Z-bar linkage system delivers superior lifting and digging capabilities, making operation smoother and more efficient. The heavy-duty front and rear frames are built for durability, designed to withstand high-impact loads and tough working conditions.



The hydrostatic transmission is electronically controlled, allowing for smooth transitions between high and low speeds while eliminating shift impact. Its high-performance power transmission system ensures efficient and seamless operation. The reinforced drive axle, with its high dynamic load capacity, is built to withstand demanding heavy-duty conditions.

SAFETY AND COMFORT



The emergency stop button inside the cab allows for immediate engine shutdown in emergencies. The hydraulic lock and quick coupler cylinder lock help enhance overall safety.



The ROPS & FOPS cab is built for strength and durability, providing reliable protection against heavy impacts. CAE simulation analysis enhances structural integrity by reducing stress concentration and eliminating weak points, ensuring a high level of safety. Precision welding and heavy-duty materials create strong, durable welds, delivering exceptional torsional strength and superior resistance to heavy loads.

Safety First Comfort Always

The XC918U is designed to provide a safe and comfortable operating experience, even in the most demanding construction environments. Its ROPS & FOPS-certified cab is built for durability and protection, featuring an emergency stop button and hydraulic lock for enhanced safety. The ergonomically designed cab offers intuitive, easy-to-reach controls, reducing operator fatigue and improving overall efficiency on the job.



The climate-controlled air conditioning system provides 360° airflow for consistent heating and cooling. An electric drain valve offers a more convenient way to manage drainage.

The integrated instrument panel displays real-time operational data and alerts operators to any malfunctions. The panoramic cab design enhances visibility, making work easier and more efficient.



The high-performance air-suspension seat features six-way adjustability for maximum comfort. Both the handle and armrest box can be independently adjusted to suit different operator preferences. The thick rubber floor ensures superior sealing, sound insulation, and noise reduction for a quieter work environment. provides excellent sealing, sound insulation and noise reduction.

FLEXIBILITY AND VERSATILITY



The optimized, compact design makes it ideal for municipal construction, agriculture, and other demanding work environments.

Its intelligent real-time control system adjusts motor speed and displacement, providing multiple travel modes for enhanced performance.



The center-articulated oscillation structure features 9° of center oscillation and $\pm 38^{\circ}$ of articulated steering for enhanced stability and maneuverability.

Its short-tail design reduces both machine size and turning radius, making it more agile in tight spaces.

Adaptable Solutions For Every Challenge

The XC918U loader is designed for maximum versatility, making it ideal for working in tight spaces, such as narrow alleys, indoor facilities, and crowded construction sites.

The XC918U easily switches between attachments like buckets, forks, snowplows, and breakers, allowing it to adapt quickly to a variety of tasks.



The standard third-function hydraulic system is designed for versatile attachments, allowing for a wide range of work applications.

Its high-flow hydraulic circuits enhance performance and efficiency for demanding tasks.



It is compatible with a variety of standard quick coupler devices, offering flexible attachment options and easy, on-demand replacements.

A wide range of attachments and custom solutions are available to meet specific job requirements.

EASY MAINTENANCE



The front-flip hood opens over 45° and the side-flip cab opens 40°, facilitating easy access for maintaining the cab engine radiator, hydraulic oil tank and filter element.

Centralized repair point design for convenient maintenance.



The centralized pressure measurement system makes hydraulic maintenance and inspections quick and easy.

For added convenience, the controller is located in the right-side pilot box, while the centralized fuse box is positioned on the left for efficient access and maintenance.

Simple Maintenance Smart Solution

The optimized design enhances the durability and reliability of key components while streamlining maintenance. With centralized lubrication and pressure measurement interfaces, servicing is more convenient and efficient. The wide-angle front-flip hood provides easy access to critical maintenance points, helping to minimize downtime and keep operations running smoothly.



Enhanced diagnostics improve maintenance efficiency by identifying issues quickly. Real-time fuel consumption monitoring allows for easy analysis and better management of operating costs. The engine diagnostic interface, located inside the cab, connects to a computer for fast and accurate fault detection.



Global coverage of marketing and service outlets ensures exceptional support.

The GPS terminal system monitors the machine's construction status and engine performance data.

MAIN SPECIFICATIONS

Overall Parameter

Type	Parameter	
Operating weight	6300kg	13889.1lb
Bucket capacity	1.0m ³	1.3yd ³
Rated load	1800kg	3968.3lb
Maximum breakout force	58kN	13038.9lbf
Tipping load	Straight-4582kg	Straight-10101.6 lb
	Fully articulated- 3850kg	Fully articulated- 8487.8 lb

Engine

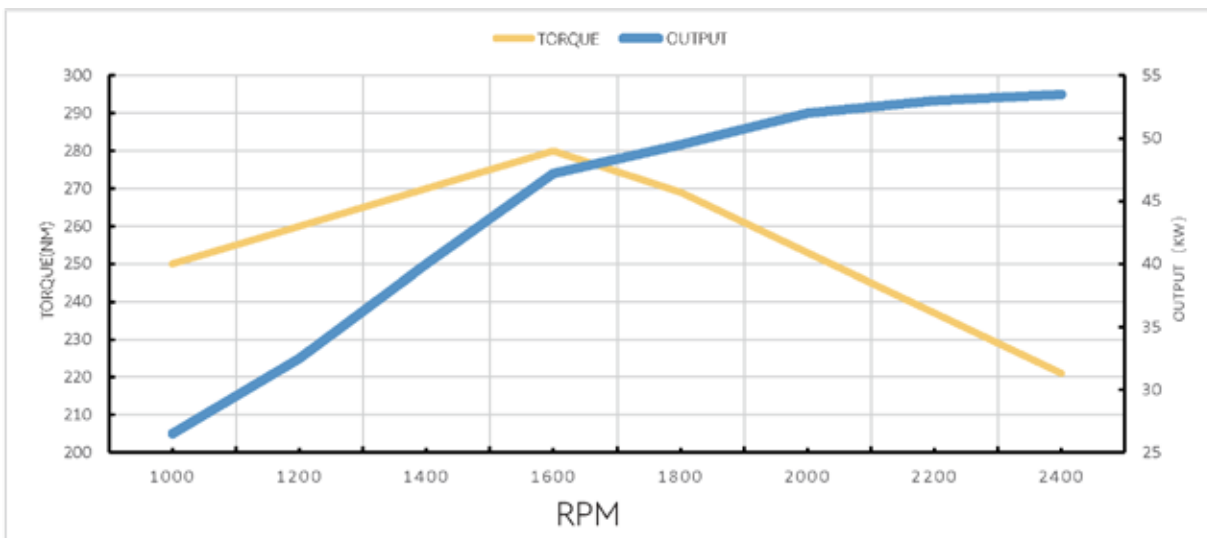
Manufacturer Model	Yanmar 4TNV98CT	
Type	In-line four-cylinder, Intake turbo-charging electronic common rail high-pressure injection	
Rated power	53.7kW @2500RPM	72.0hp@2500RPM
Maximum power	53.7kW@2500RPM	72.0hp@2500RPM
Maximum torque	269~291Nm@1625RPM	198~215ft-lb@1625RPM
Emission stage	EU StageV/T4F	EU StageV/T4F
Displacement	3.3L	0.9gal

Driveline

Transmission	Type	Gearbox (electric parking)	
Travel speed	Forward	1st	9km/h 5.6mph
		2nd	20km/h 12.4mph
	Reverse	1st	9km/h 5.6mph
		2nd	20km/h 12.4mph
Braking distance		5.3m	17.4ft
Tyre		16/70R20	16/70R20
Minimum ground clearance		370mm	1.2ft

Axle

Drive system	Four-wheel drive
Front axle	Fixed
Rear axle	Fixed
Reduction gear	Planetary final drive in wheel hubs
Differential	Front/rear axle 100% differential lock



Engine External Characteristic Curve

Cab

Cab	ROPS & FOPS certified panoramic cab; Equipped with storage box, phone storage case, rear-view mirror, extinguisher, breaker, clothes hook; FNR integrated joystick meets high-end needs. Standard cooling and heating air-conditioner, adjustable seat and steering column provide comfortable operation.	
Heating power	5kW	6.7hp
Cooling power	3.8kW	5.1hp

Brakes

Service brake	Mechanical power brake complemented by an inching brake.
Parking brake	Electronic handbrake, hydraulically controlled, caliper disc brake.
Emergency brake	The emergency stop button inside the cab to help stop the engine in an emergency

Hydraulic System

Type	Fixed	
Pumps	Gear pump	
Rated flow	92.5L/min	24.4gal/min
Control valve	Third function valve	
System pressure	24MPa	
Operating hydraulic circuit	Lifting circuit for lifting, holding, lowering and staying movable status of the boom, Tipping cylinder circuit for returning, holding and tipping the bucket, Boom and bucket can be operated simultaneously, Third function hydraulic electric control joystick operation, one-touch cruise control operation.	
Total circle time	≤11s	
Hydraulic cylinder (type - amount - cylinder bore - rod diameter - stroke)	Lifting cylinder-2 Tipping bucket cylinder-1	

Steering System

Type	Load-sensitive	
Pumps	Gear pump	
Rated flow	92.5L /min	
System pressure	19MPa	2755.72psi
Hydraulic cylinder	1	
Steering angle	±38°	

Sound

Exterior sound power level (Max cooling fan speeds)	101dB
Sound pressure level (ISO 6396:2008)	78dB
Exterior sound power level (ISO 6395:2008)	101dB

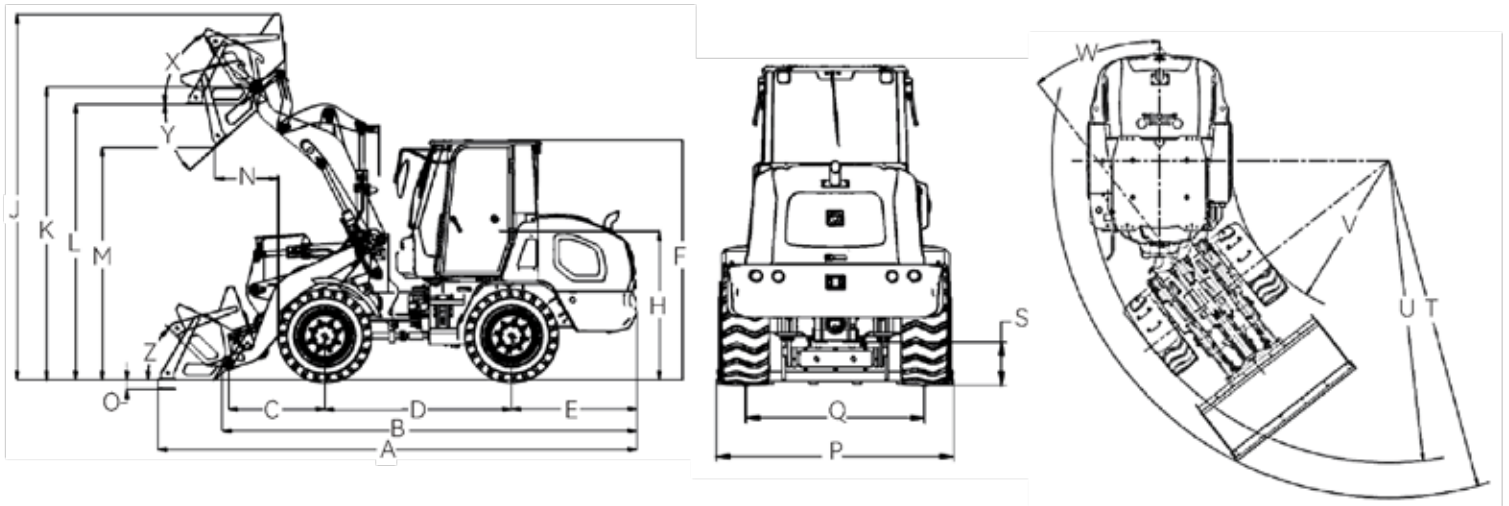
* The guaranteed sound levels described below may vary depending on factors including operating conditions, cooling fan speeds, engine type, and so on. Hearing protection is required if the operator works in an improperly maintained cab or is exposed to noisy environments with open doors or windows.

Referenced Filling Capacity

*Reference only. Filling volume is based on the actual scale.

Type	Filling capacity	Filling capacity
Fuel tank	80L	21.1L
Engine oil	5.5L	1.5gal
Front axle	13L	3.4gal
Rear axle	13L	3.4gal
Transmission case	2L	0.5gal
Coolant	15L	4.0gal
Hydraulic oil	47L	12.4gal

MAIN SPECIFICATIONS



	Dimension and Specification	Parameter	Parameter
A	Overall length	5520mm	18.11ft
B	Overall Length (without bucket)	4773mm	15.66ft
C	Distance: center of front axle to bucket pin	1108mm	3.64ft
D	Distance: center of front axle to bucket pin	2150mm	7.05ft
E	Length rear: axle to bumper	1445mm	4.74ft
F	Height to top of cab	2745mm	9.01ft
H	Seat height (ground)	1660mm	5.45ft
J	Max lifting height	4193mm	13.76ft
K	Height to hinge pin, fully raised	3354mm	11.0ft
L	Clearance: Level Bucket	3155mm	10.35ft
M	Dumping height	2660mm	8.73ft
N	Dumping reach	723mm	2.37ft
O	Digging depth	90mm	0.295ft
P	Overall width	2060mm	6.76ft
Q	Wheel track	1550mm	5.09ft
S	Ground clearance	370mm	1.21ft
T	Turning radius: over bucket	4602mm	15.10ft
U	Turning radius: outside of tyre	4123mm	13.53ft
V	Turning radius: inside of tyre	2163mm	7.10ft
W	Steering angle	38°	38°
X	Rollback angle, fully raised	58°	58°
Y	Dumping angle for maximum lifting	42°	42°
Z	Rollback angle, ground	43.7°	43.7°

* The technology of XCMG wheel loaders is subject to constant improvement and upgrading. In case the specifications or detailed appearance contained in this brochure differ from actual products, the latter shall prevail.

* XCMG reserves the right of final interpretation for the above. Our products may be modified without prior notice to users.

EQUIPMENT

Powertrain	STD	OPT
YANMAR Engine	●	
Engine intake preheating	●	
Hydrostatic Continuously Variable Transmission	●	
Front/rear axle 100% differential lock		●
Electric parking brake		●
Dry service brake	●	
Emergency stop	●	
Independent heat dissipation	●	
Manual accelerator control	●	
Speed limited	●	
Traction control	●	
Radial tyre 16/70-20	●	
Tubeless tyre 16/70R20		●
Wide base tyre 560/45R22.5		●

Hydraulic System	STD	OPT
Third function quick coupler	●	
Hydraulic lock	●	
Quick coupler oil cylinder lock	●	
Diagnostic pressure joint	●	
Hydraulic oil cooler	●	
Anti-explosion valve		●
Ride control		●
Electric controlled third function	●	
Third function flow lock	●	

Electrical System	STD	OPT
Electrical air cleaner blockage alert	●	
Fuel level	●	
Engine coolant temperature	●	
Transmission oil temperature display	●	
Engine tachometer	●	
Transmission oil temperature display	●	
Fuel tank display	●	
Working hour display	●	
Battery main switch	●	
Electric horn	●	
Parking brake	●	
High beams	●	
Turn signal	●	
2 Rear combination lights (Reserve, turn signal, clearance light, brake lights)	●	
2 Front roof working light (LED)	●	
2 Rear roof working light (LED)	●	
Main light	●	
2 Working light on the rear hood (LED)	●	
Working light	●	
Rotating warning light	●	

Safety	STD	OPT
Fire extinguisher	●	
Fuel tank filler cap lock		●
Boom safe lever	●	
Emergency steer		●

CAB	STD	OPT
Mirror heating		●
Rear wiper	●	
ROPS&FOPS cab	●	
Protective cab screen		●
Coat hooker	●	
Magazine bag	●	
Radio/USB player	●	
Wrist supports and armrests	●	
24V to 12V DC converter (20A)		●
Cab lock/key	●	
Cooling and heating air-conditioner	●	
3-inch retractable safety belt and adjustable air suspension (heated)		●
Air suspension seat		●
Cup holder	●	
Single brake pedal	●	
Start-up	●	
FNR gear	●	

Other	STD	OPT
Counterweight	●	
Traction pin	●	
Handrails/ladders/ platforms/pedals	●	
Splash guard (front/rear)	●	
ECD (Engine Connection Diagnosis)	●	
Anti-corrosion spray		●
Toolkit	●	
Reversible fan	●	

Bucket	STD	OPT
1.0m³ standard bucket	●	
1.2m³ light material bucket		●
1.5m³ light material bucket		●
EU quick coupler	●	
US skid steer quick coupler		●

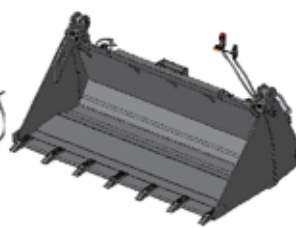
Attachment	STD	OPT
Cleaner		●
Auger		●
Breaker		●
Excavator		●
Digger		●
Planer		●
Tree Transplanter		●
Bulldozer		●
Industrial grapple		●
Forklift		●
Snow blade		●
Hay Spear		●
Deicer		●
Vibratory compactor		●
Hook		●
Oil Drum Clamp		●
Clamping Plier		●
Grass Catcher		●
Snow Thrower		●
Concrete mixer		●



Sweeper



Snow Pusher



4 in 1 Bucket



Angle Broom



Forklift

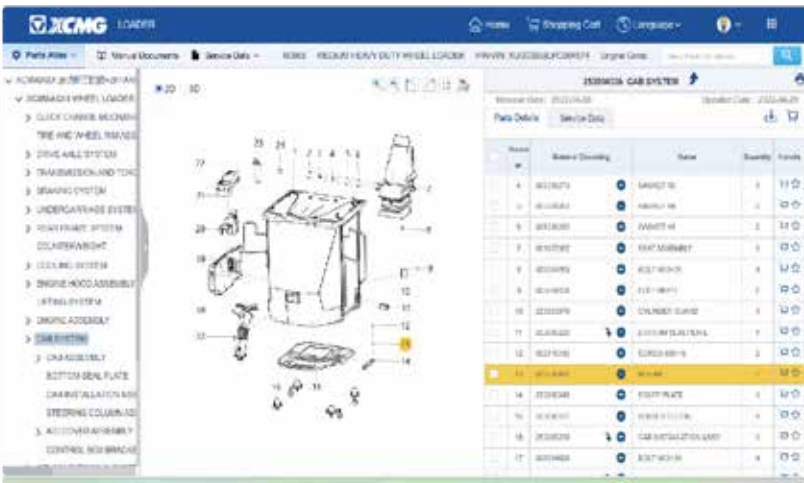
* XCMG loaders offer various attachment choices. Please contact your local dealer for detailed attachments and the delivery cycle after selection.

OPTIMUM SERVICES XCMG GUARANTEED



Professional Integrated Complete Solutions

XCMG has built a strong reputation for delivering high-quality, reliable, and durable construction machinery. Furthermore, the company has expanded its comprehensive service network, providing customers with seamless, locally integrated solutions for maximum efficiency and support.



Full Range of Services Ready for you

To provide fast and efficient support, XCMG experts are ready to assist you from the nearest facility. Our comprehensive range of services are designed to lower your operating costs and maximize your profitability.



Plateau Construction



Forestry Construction



Agriculture



Road Construction



Stone Mining



Extreme Cold Working Condition



Mine Engineering



Aggregate

Introduction

Our Mission and Vision: Empower Solid Future.

XCMG was originally founded as Huaxing Iron Factory in 1943 and officially established as a group in 1989. As an industry pioneer, XCMG has played a leading role in the development of China's construction machinery industry, growing into a billion-dollar global leader known for its innovation and competitiveness. The company has consistently held the #1 position in China's construction machinery sector and has ranked #3 globally for three consecutive years. Additionally, XCMG has been recognized on the "World Brand 500" list for four consecutive years.

The XCMG Earthmoving Machinery Division is one of the company's five core business sectors, specializing in the research, development, manufacturing, sales, and service of full-series loaders, skid-steer loaders, and backhoe loaders ranging from 0.6 to 35 tons. Guided by a philosophy of global integration and service, the division is committed to delivering top-tier quality and value, setting a new benchmark in China's high-end earthmoving machinery market.



TOP 3

TOP 3 Global Construction Industry

2000

More than 2000 Service Terminals



1943

8500

More than 8500 Valid Patents

40

More than \$4 Billion Annual Exports



SOLID TO SUCCEED



XCMG North America Corporation
305 Equipment Ct. Suite A
Lawrenceville, GA 30043
+1 725-605-2777
letsgo@xcmgusa.com
xcmg-usa.com