



XGS65J

MOBILE ELEVATING WORK PLATFORM

Comply with ANSI/CSA



XGS65J

MOBILE ELEVATING WORK PLATFORM

FEATURES

MEASUREMENTS

22m (72' 2") working height
 Without Limited:300 kg (661 lb.) lift capacity
 Limited: 460kg (1014 lb.) lift capacity

PRODUCTIVITY

2.44 m x 0.9 m (8' x 3') steel platform
 4WD Axle balance system
 Solid tire
 Self-leveling platform
 Hydraulic platform rotation
 Fully proportional joystick controls
 Hydraulic oil cooler
 Drive enable
 Hour meter
 Tilt alarm
 Lift and lower alarm
 Motion alarm
 360° continuous turntable rotation
 Locking turntable covers
 Positive traction drive
 Ground control box cover
 Engine status display
 Thumb rocker steering control
 Dual flashing beacons
 Emergency power unit

POWER

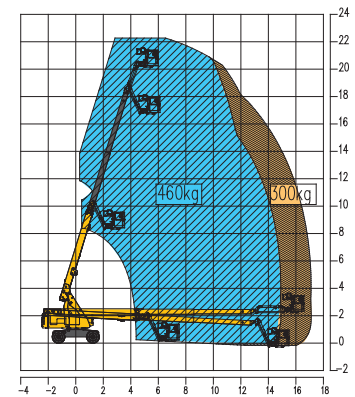
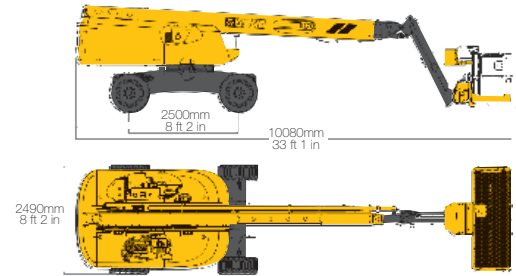
Kubota V2403-CR-EW02
 36.8kw/(2700r/min)

HIGHLIGHT

- Dual parallel linkage and telescopic boom could realize the dynamic adjustment of vehicle center of gravity, making the complete vehicle more stable. With 4-wheel drive, off-road wide tires and axle balance system, the machine is excellent in the drive system and travel experience.
- Multi-load envelope control technologies could continuously monitor the loads, effectively making use of boom and making its work performance very well. Auto balance extending mechanism improves safety and extends the service life of steel rope.
- Electrical control system adopts the distributed control technologies based on PLC and CAN, which could realize the functions of auto leveling, the weight detection of loads, the dynamic monitoring and the fault warning, etc.
- Mostly adopting the hard tube arrangement makes the line neat and beautiful, and effectively reduces the wear and failure of tubes.

OPTIONS

Half height mesh platform
 Platform anti squeezing hand auxiliary track
 Cold resistant, fireproof, and biodegradable hydraulic oil
 Tool tray
 Fall protection components
 AC power cord connected to the platform
 Rough terrain foam-filled tires



MAIN PARAMETER

Item	Metric	Imperial
Overall length	10080mm	33 ft 1 in
Overall width	2490mm	8 ft 2 in
Overall height	2460mm	8 ft 1 in
Wheel base	2500mm	8 ft 2 in
Maximum working height	22m	72 ft 2 in
Maximum platform height	20m	65 ft 7 in
Maximum working range	17.2m	56 ft 5 in
Maximum load capacity	300kg without limited / 460kg with limited	661lbs without limited / 1014lbs with limited
Luffing range of boom	-3°~ +73°	-3°~ +73°
Slewing angle of turntable	360°	360°
Maximum rearward slewing	1270mm	4 ft 2 in
Working platform dimensions	2440mm x 900mm	8 ft x 2 ft 11 in
Slewing angle of platform	160°	160°
Total machine weight	11099kg	24469 lbs
Maximum travel speed	6.3Km/h	3.9 mph
Minimum turning radius	6m	19 ft 8 in
Maximum ground clearance	230mm	9in
Maximum theoretical gradeability	45%	45%
Tire	36x14-20 355/55D625	36x14-20 355/55D625
Engine model	Kubota V2403-CR-EW02	Kubota V2403-CR-EW02
Engine rated power	36.8kw/2700rpm	49 hp / 2700rpm