



# XGS158J

MOBILE ELEVATING WORK PLATFORM

Comply with ANSI/CSA



# XGS158J

## MOBILE ELEVATING WORK PLATFORM

### FEATURES

#### MEASUREMENTS

50m (164' ) working height  
Without Limited:300 kg (661 lb.) lift capacity  
Limited: 460kg (1014 lb.) lift capacity

#### PRODUCTIVITY

2.4 m x 0.9 m (7'10" x 3') steel platform  
4WD

Rough terrain foam-filled tires  
Self-leveling platform  
Hydraulic platform rotation  
Fully proportional joystick controls  
Hydraulic oil cooler  
Drive enable  
Hour meter  
Tilt alarm  
Lift and lower alarm  
Motion alarm  
360° continuous turntable rotation  
Locking turntable covers  
Positive traction drive  
Ground control box cover  
Engine status display  
Thumb rocker steering control  
Dual flashing beacons  
Emergency power unit

#### POWER

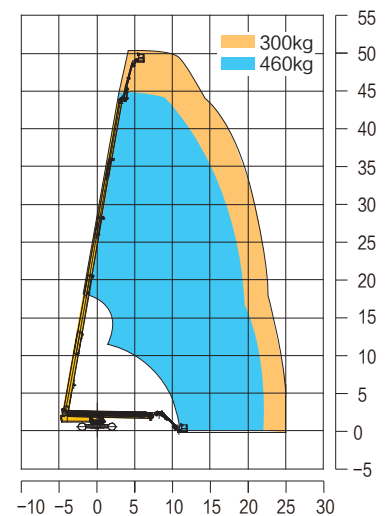
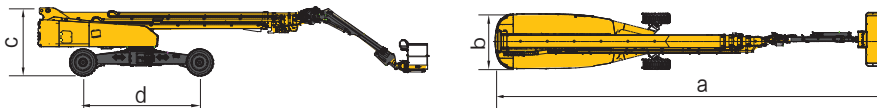
Kubota V3307-CR-TE5AB-XCM2S  
54.6kW/ (2200r/min)

### HIGHLIGHT

- X type axle configuration, safe operation, convenient transportation.
- Electronic control four wheel steering, single axle, all wheel and crab shape three steering modes, flexible steering.
- Load sensitive hydraulic system, more energy saving operation;
- Boom weight drop, more energy saving;
- The deadweight of the boom decreases, the amplitude is more stable;
- Chip proportional valve hydraulic system, spool long stroke, more accurate speed regulation, more stable action;
- Boom action stepless speed regulation, speed control more free, more convenient;

### OPTIONS

- Half height mesh platform
- Platform anti squeezing hand auxiliary track
- Cold resistant, fireproof, and biodegradable hydraulic oil
- Tool tray
- Fall protection components
- AC power cord connected to the platform



### MAIN PARAMETER

Item	Metric	Imperial
Overall length	17.46m	57ft 3 in
Overall width (axle retracted/axle extended)	2.49m/5.03m	8 ft 2 in/16ft 6 in
Overall height	3m	9 ft 10 in
Wheel base(axle retracted/axle extended)	5.22m/4.59m	17 ft 2 in/15 ft 1 in
Maximum working height	50m	164 f 1 int
Maximum platform height	48m	157 ft 5 in
Maximum working range	24.7m	81 ft
Maximum load capacity	300 kg Without limited / 460 kg With limited	661lbs without limited / 1014lbs with limited
Luffing range of boom	0°~ +80°	0°~ +80°
Slewing angle of turntable	360° continuous	360° continuous
Maximum rearward slewing	2m	6 ft 7 in
Working platform dimensions	2.4m*0.9m	7 ft 10 in * 2 ft 11 in
Slewing angle of platform	160°	160°
Total machine weight	24440kg	53881lbs
Maximum travel speed	4.5km/h	2.8 mph
Minimum turning radius ( axle retracted )	inside 7.6m outside 9.5m	24 ft 11 in 31 ft 2 in
Minimum turning radius ( axle extended )	inside 2.8m outside 6.6m	9 ft 2 in 21 ft 8 in
Maximum ground clearance	0.4m	1 ft 4 in
Maximum theoretical gradeability	45%	45%
Tire	445/55-25 R28	445/55-25 R28
Engine model	Kubota V3307-CR-T-EW10M_01	Kubota V3307-CR-T-EW10M_01
Engine rated power	54.6kW/ 2200r/min	73.2hp / 2200r/min