



XGA45ACJ

MOBILE ELEVATING WORK PLATFORM

Comply with ANSI/CSA



XGA45ACJ

MOBILE ELEVATING WORK PLATFORM

FEATURES

MEASUREMENTS

15.8 m (51' 10") working height
227kg (500 lbs) lift capacity

PRODUCTIVITY

1.4 m x 0.7 m (4'7" x 2' 3") steel platform
2WD
Solid tire
Self-leveling platform
Hydraulic platform rotation
Fully proportional controls
Drive enable
Horn
Hour meter
Tilt alarm
Lift and lower alarm
355° non-continuous turntable rotation
Locking turntable covers
Zero tailswing
Emergency power unit
Alarm package
Emergence stop
Dual flashing beacons

POWER

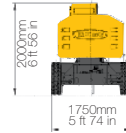
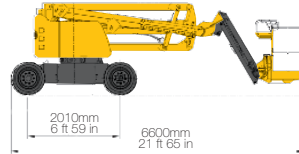
2.95 hp/24 V auxilliary power unit(DC)
420 Ah/48 V DC power source

HIGHLIGHT

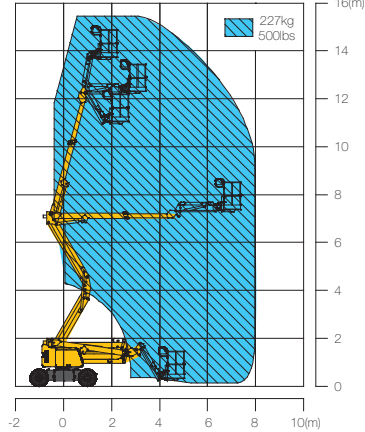
- With the "Σ" shape combination boom, the vehicle allows for vertical lifting and horizontal extension, and has a strong ability to climb over obstacles.
- 160° rotatable platform provides a larger operating range;
- "zero tailswing".
- Electro-hydraulic proportional system control precision and efficiency. Provide chassis tilt protection, platform overload alarm, emergency landing, safe speed limit, flexible start-stop technology and other protection measures.

OPTIONS

- Power supply to platform
- Compressed air line to platform
- Anti-impact bracket for platform
- Non-marking tyre



Work Curve Graph



MAIN PARAMETER

Item	Metric	Imperial
Overall dimensions (L × W × H)	6.6m × 1.75m × 2m	21ft 8in × 5ft 9in × 6ft 7in
Working platform overall dimensions	1.4m × 0.7m × 1.15m	4ft 7in × 2ft 4in × 3ft 9in
Max speed	5.2km/h	3.23 mph
Maximum theoretical gradeability	30%	30%
Minimum external turning radius	3.3m	10ft 10in
Ground clearance (center)	0.21m	8 ft
Wheel base	2.01m	6ft 7in
Total machine weight	6900kg	15212 lbs
Maximum working height	15.8m	51ft 10in
Maximum platform height	13.8m	45ft 3in
Maximum working range	8.2m	26ft 11in
Luffing scope of Boom No. 1	0°~60°	0°~60°
Luffing scope of Boom No. 2	-8°~75°	-8°~75°
Luffing scope of crank arm	-60°~80°	-60°~80°
Platform swing	160°	160°
Turntable slewing angle	355°discontinuous slewing	355°discontinuous slewing
Maximum load	227kg	500 lbs
Maximum rearward slewing	0m	0 ft
Control system	12V DC proportional control	12V DC proportional control
Emergency control unit	24V DC battery	24V DC battery
Tire	250-15 solid tire	250-15 solid tire
Platform lowering speed	0.1 m/s ~ 0.3 m/s	0.22 mph ~ 0.67 mph
Telescopic speed of Boom No. 2	0.1 m/s ~ 0.3 m/s	0.22 mph ~ 0.67 mph
Slewing speed	0.5 ~ 1 rpm	0.5 ~ 1 rpm
Power source	420 Ah/48 V (DC)	420 Ah/48 V (DC)
Auxilliary power unit	2.2kw/24 V (DC)	2.95 hp/24 V (DC)
Hydraulic tank capacity	20L	20L