

XCMG North America Corporation
305 Equipment Ct. Suite A
Lawrenceville, GA 30043
+1 725-605-2777
letsgo@xcmgusa.com
xcmg-usa.com



XGS85J

MOBILE ELEVATING WORK PLATFORM



Comply with ANSI/CSA



XGS85J

MOBILE ELEVATING WORK PLATFORM

FEATURES

MEASUREMENTS

28.2m (78' 9") working height
Without Limited: 300 kg (661 lb.) lift capacity
Limited: 460kg (1014 lb.) lift capacity

PRODUCTIVITY

2.4 m x 0.9 m (7'10" x 3') steel platform
4WD Axle balance system
Rough terrain foam-filled tires
Self-leveling platform
Hydraulic platform rotation
Fully proportional joystick controls
Hydraulic oil cooler
Drive enable
Hour meter
Tilt alarm
Lift and lower alarm
Motion alarm
360° continuous turntable rotation
Locking turntable covers
Positive traction drive
Ground control box cover
Engine status display
Thumb rocker steering control
Dual flashing beacons
Emergency power unit

POWER

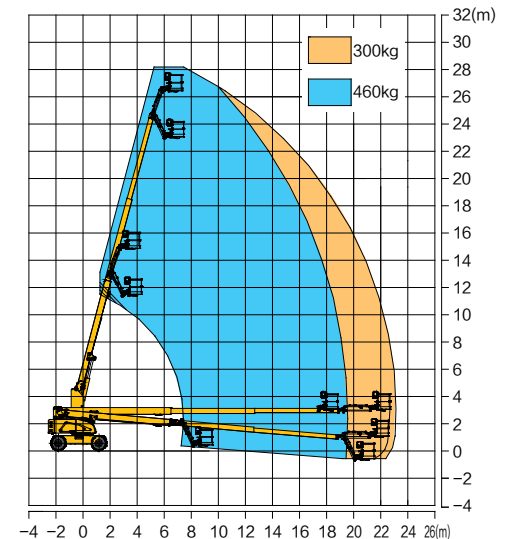
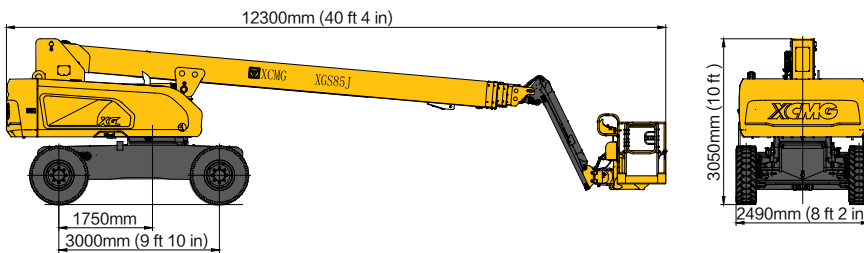
V2607-CR-TE5B-XCM-1
48kw/(2400r/min)

HIGHLIGHT

- The single cylinder drives the boom to change amplitude and lift synchronously to improve the operation speed, quickly approach the construction area and improve the construction efficiency. It is suitable for the construction area with relatively low height and narrow space.
- Four wheel drive system, rough terrain wide tire and axle balance system make the equipment have excellent driving and road adaptability.
- The power system adopts electronic control engine. The oil pressure, water temperature, speed and other sensors are engine integrated and controlled by ECU, which is safe and reliable. At the same time, it has its own fault diagnosis interface, which is convenient for fault diagnosis and maintenance.
- The electrical control system adopts the distributed control technology based on PLC and can bus, which can realize automatic leveling, platform load weighing, dynamic monitoring, fault alarm and many other functions.

OPTIONS

- Half height mesh platform
- Platform anti squeezing hand auxiliary track
- Cold resistant, fireproof, and biodegradable hydraulic oil
- Tool tray
- Fall protection components
- AC power cord connected to the platform



MAIN PARAMETER

Item	Metric	Imperial
Overall length	12300mm	40 ft 4 in
Overall width	2490mm	8 ft 2 in
Overall height	3050mm	10 ft
Wheel base	3000mm	9 ft 10 in
Maximum working height	28.2m	92 ft 6 in
Maximum platform height	26.2m	85ft 11 in
Maximum working range	23.0m	75 ft 6 in
Maximum load capacity	460kg (limited) / 300kg (without limited)	1014lbs (limited) / 661lbs (without limited)
Luffing range of boom	-5°~75°	-5°~75°
Slewing angle of turntable	360°	360°
Maximum rearward slewing	1600mm	5 ft3 in
Working platform dimensions	2400mm x 900 mm	7 ft 10 in x 2 ft 11 in
Slewing angle of platform	160°	160°
Total machine weight	18300kg	40344 lbs
Maximum travel speed	6.1km/h	3.8 mph
Minimum turning radius	6.7m	21ft 12 in
Minimum ground clearance	310 mm	1ft
Maximum theoretical gradeability	40%	40%
Tire	385/45-28	385/45-28
Engine model	Kubota V2607-CR-T-EW03	Kubota V2607-CR-T-EW03
Engine rated power	48kw/(2400r/min)	64 hp / 2400rpm