

Boom Truck Crane XCT40_U



XCMG North America Corporation
5145 Schirlls St Las Vegas, NV 89118
Email: xcmgna@xcmg.com
Phone: 725-605-2777
Web: www.xcmg-usa.com



INTRODUCTION OF XCMG

XCMG is the leading construction equipment manufacture in China and is the third largest equipment manufacture in the world. In addition, XCMG ranks 305th among the worlds top brands. XCMG builds 16 categories of equipment including cranes, excavators, concrete production and transporting, earth moving, mining, and road reclamation and paving. XCMG also produces many of its own hydraulic, power transmission, and electronic control systems components. XCMG is the top manufacture in the world of cranes, foundation machines and concrete production and distribution equipment. XCMG's research and development groups have accumulated more than 9000 patents in China and 130 international patents. There are R&D centers and manufacturing facilitates in 10 countries including Germany, the United States, Brazil and India. The manufacturing facility in Brazil has become a model of economic cooperation between China and Brazil. XCMG exports equipment to 187 countries around the world.

OVERVIEW

XCMG New 40 USt boom truck provides high lifting capacity and offers the most versatile crane for the North American market.

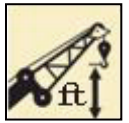
It is designed to be used on high-rise and low-rise construction sites, transportation, ports, bridges, and any other complex working environments.



35 USt



120 ft



143 ft



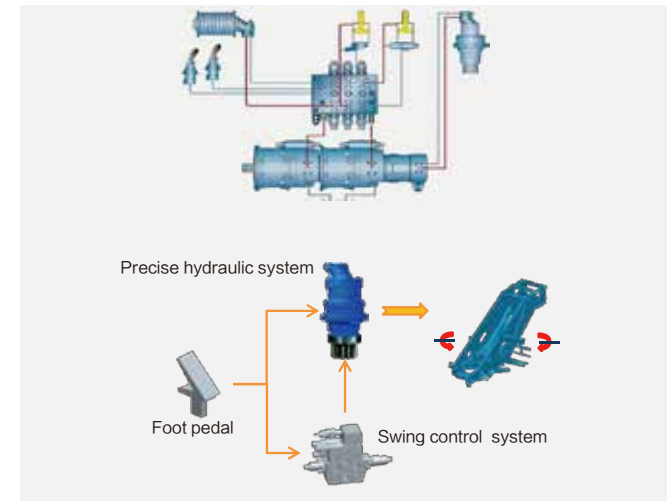


STRENGTHS AND HIGHLIGHTS



Precise lifting operation

- Energy-saving, load sense hydraulic system for boom and winch functions.
- High-power hydraulic oil independent cooling system, promoting the working efficiency and reliability.
- Separate pumps for winch, boom and swing for interaction free multi function operation. Flows can be combined for higher speeds when needed.
- Free and braked swing modes for precise swing control.



Superb lifting performance



- 2 mode boom telescoping system
- 35.8 ft - 142 ft full power 5-section boom
- Fixed jib of 30.5 ft -53.5 ft
- 0°, 15° and 30° jib offset angles



- Dual load sense variable displacement pumps
- Minimum stable winch speed 8.2 fpm, and minimum stable slewing speed 0.1°/s

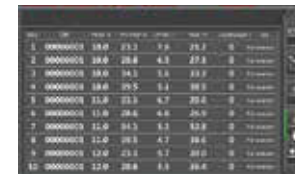


- Hydraulic pilot operated controls for accurate and precise control.
- All this to optimize fine control along with providing strong and fast performance.



Automatic working condition planning technology

- LMI includes load chart look up based on load, radius and height.
- Simplified procedure for looking up possible crane configurations for the load conditions.



Outrigger wireless remote control

- Outrigger wireless remote control.



Winch wireless remote control

- Wireless remote control for winch and boom luffing. With power switch on sub frame so there is not need to climb into the operator cab for crane set up.



Boom tip camera

- Equipped with optional boom tip camera to enable operator to observe environment when sight is blocked.

Internal boom length sensor

- Internal boom length sensors to eliminate any damage from working around trees or in other complex environments. And with the optional wireless A2B switch, there are no exposed wires outside of the boom.



New appearance and humanized design

- New generation appearance that will be a welcome addition to any fleet signifying power and performance. Attractive cab with the perfect combination of streamlining and strength. With integrated ergonomic and user-friendly details that provides an enjoyable all day operation environment.



XCMG man-machine interactive system

- 7 inch color touch screen
- Ergonomically designed working space
- Informative and interactive techniques bring more friendly man-machine interaction



Touch button

- Three control areas for safety protection, lifting operation and operating environment make control easier and more convenient.



Operator cab


- The new type steel operator cab
- 0°~20° tiltable, wider operation view




TECHNICAL SPECIFICATIONS



Intermediate frame

| | | |
|---|---|---|
| Frame | Designed and manufactured by XCMG. Made of high strength steel, all walking surfaces are anti-slip. | ● |
| Outrigger | H-type, out and down outriggers with 5th jack at front bumper. Outrigger control via Standard wireless remote control and backup manual valve. Outrigger pads stored under outriggers. Level indicator provided on each side and at rear of crane as well as in the LMI. Fully-extended: 20.3 ftx23.6 ft Half-extended: 20.3 ftx16 ft | ● |
| Hydraulic reservoir | Effective volume of oil tank: 149 GAL. | ● |
|  Superstructure | | |
| Hydraulic system | Variable displacement pumps are used for winching, luffing, and telescoping; a gear pump is used for slewing and outriggers. Separate gear pump used for HVAC. Load-sensing proportional multi-way directional control valve controlled by pilot hydraulic oil is fitted. Includes a standard hydraulic oil cooler to control oil temperature in the most demanding applications. | ● |
| Operating mode | Hydraulic pilot joysticks. Standard RLI display includes crane set up, lift parameters, load charts, lift planning, virtual wall, and fault diagnosis. | ● |
| Main winch system | Hydraulic control is used for speed regulation. The system is driven by a hydraulic motor through a planetary gear reducer, with a normally closed brake. Including load hold balance valve and a grooved drum and standard rotation-resistant lift rope. | ● |
| Operator cab | Fully-enclosed steel structure with large windows and is tiltable. Safety glass is used for all windows and sun shades are fitted. Wipers are fitted for the windshield and roof window. Standard controls and indicators are ergonomically arranged in the cab. The cab features a new ergonomic seat design with adjustable backrest and armrests that include joysticks. A sliding door and an electric control pull-out step to facilitate easy and safe access to the cab. | ● |
| Slewing system | Pilot hydraulic controls a directional valve with built in brake and free swing functions. The system is driven by a piston hydraulic motor through a planetary gear reducer, with a normally closed brake. | ● |
| Safety devices | Hydraulic balance valve on outrigger jacks, boom hoist and extension cylinders and winch motors. Hydraulic relief valves on all functions, LMI, 3rd wrap limiter, and anti-two block at boom head. | ● |
| LMI | The operator aid is installed in operator cab. When the load moment approaches overload value, it will send out visual and audible alarms, and automatically stops dangerous movements before overloading. Overload memory function (black box) and fault self-diagnosis functions are built into the system. | ● |

| | | |
|---|--|---|
| Counterweight | Total weight is 4409 lbs, fixed counterweight. | ● |
| Hook block | Hook block 5.5 USt. | ● |
|  Boom system | | |
| Boom | 5-section, U-shape cross section welded structure. A dual-cylinder and ropes telescoping system is fitted. The two double-acting cylinders are controlled separately to give 2 mode operation and are fitted with load holding valves. Boom length: 35.8 ft~142 ft. Boom angle: -1°~80° | ● |
| Optional equipment | | |
| Auxiliary winch system | Hydraulic control is used for speed regulation. The system is driven by a hydraulic motor through a planetary gear reducer, with a normally closed brake, a balanced valve and a grooved drum equipped. | ○ |
| Operating mode | Winch and boom luffing wireless remote controller | ○ |
| Swing lock | 360° gear type swing lock | ○ |
| Swing mode | Free swing and proportional brake | ○ |
| Boom tip camera | Camera on main boom head, with screen in operator cab | ○ |
| Internal boom length sensor | Boom length reels mounted internal to the boom at the base and second sections. | ○ |
| Fix jib | The jib consists of a connecting bracket, a rotating bracket and two lattice sections. Three offset angles of 0°, 15° and 30° are available. Jib length: 30.5 ft, 53.5 ft | ○ |
| Hook blocks | Hook blocks 40 USt, 27.5 USt. | ○ |
| Fifth jack | Installed in front of the vehicle for ensuring the stability and safety during over front operation | ○ |

Product parts list is as mentioned above. Please refer to the product quotation for specific parts.

Symbol explanation:

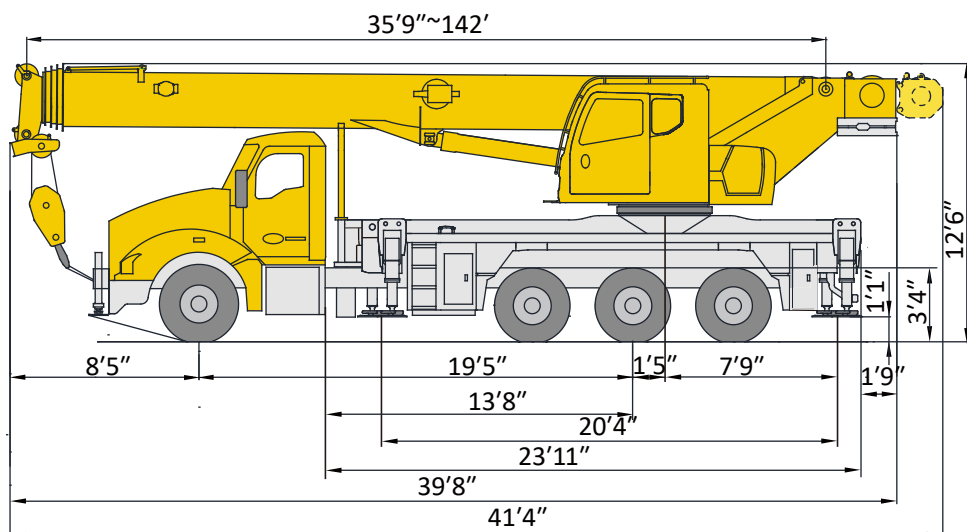
● —it means the standard configuration;

○ —it means the optional configuration.




TECHNICAL SPECIFICATIONS

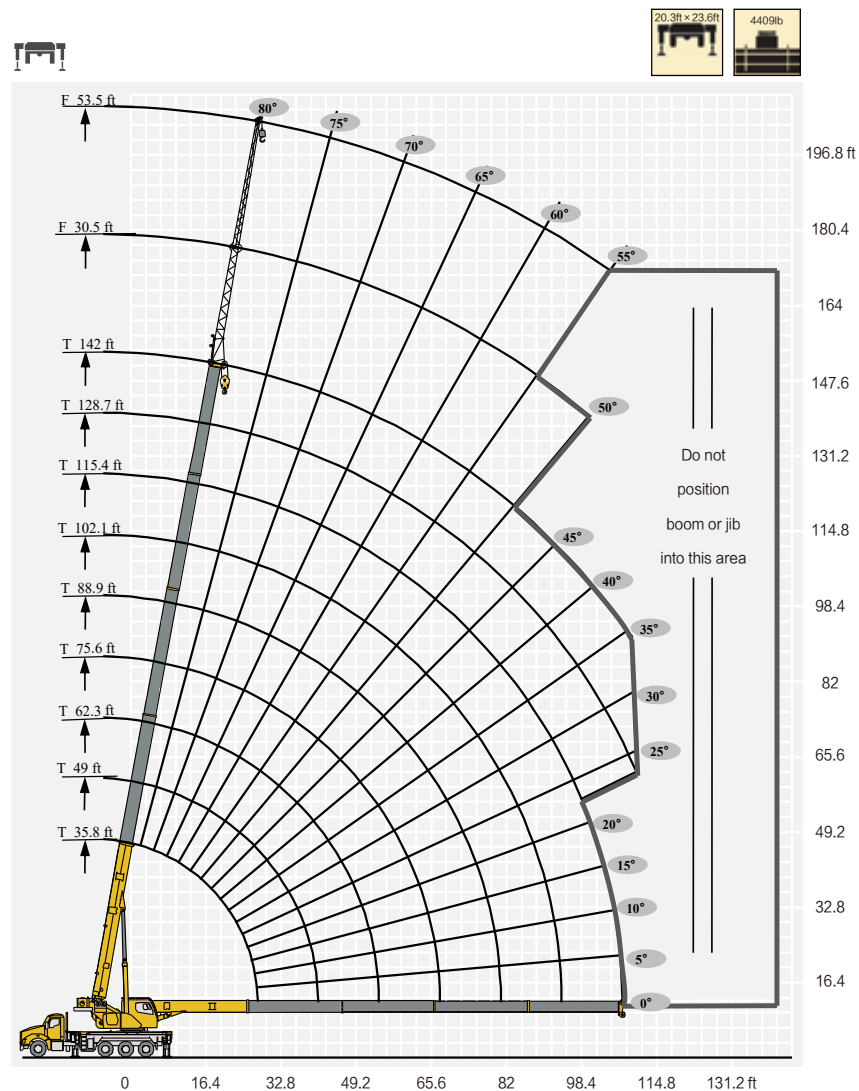
Dimensions



Truck Axle Ratings And Estimated Bare Chassis Weights

|  | Chassis data | Front Axle Gross Weight Rating | Rear Axle Gross Weight Rating | Pusher Axle Weight Rating | Min truck Axle Weight -Front axle | Min truck Axle Weight -Rear axle |
|---|--------------|--------------------------------|-------------------------------|---------------------------|-----------------------------------|----------------------------------|
| | Weight/lb | 22000 | 46000 | 13500 | 12000 | 8700 |

|  | Hook | No. of sheaves | No. of lines | Weight/lb | Remarks |
|---|----------|----------------|--------------|-----------|------------------------|
| | 40 USt | 4 | 8 | 794 | Single hook (Optional) |
| | 27.5 USt | 3 | 6 | 440 | Single hook (Optional) |
| | 5.5 USt | — | 1 | 220 | Single hook (Standard) |





| | 35.8 ft | 49 ft | 49 ft | 62.3 ft | 62.3 ft | 62.3 ft | 75.6 ft | 75.6 ft | 75.6 ft | 88.9 ft | 88.9 ft |
|--|---------|-------|-------|---------|---------|---------|---------|---------|---------|---------|---------|
|--|---------|-------|-------|---------|---------|---------|---------|---------|---------|---------|---------|

| | | | | | | | | | | | |
|-----|-------|--------|-------|--------|--------|-------|--------|-------|--------|-------|--------|
| 5 | 80020 | | | | | | | | | | |
| 7 | 70540 | | | | | | | | | | |
| 8 | 61720 | | | | | | | | | | |
| 10 | 55110 | 30860 | 44090 | 30860 | 28210 | 39680 | | | | | |
| 11 | 55110 | 30860 | 44090 | 30860 | 28210 | 39680 | | | | | |
| 13 | 49600 | 30860 | 43870 | 30860 | 28210 | 39680 | 28210 | 18950 | 30860 | | |
| 15 | 46290 | 30860 | 43650 | 30860 | 28210 | 39680 | 28210 | 18950 | 30860 | 18950 | 13880 |
| 16 | 43210 | 30860 | 40560 | 30860 | 28210 | 38580 | 28210 | 18950 | 30860 | 18950 | 13880 |
| 18 | 39020 | 30860 | 37910 | 30860 | 28210 | 35710 | 28210 | 18950 | 30860 | 18950 | 13880 |
| 20 | 34830 | 30860 | 35050 | 30860 | 28210 | 33500 | 28210 | 18950 | 30860 | 18950 | 13880 |
| 21 | 31740 | 29760 | 30860 | 30860 | 28210 | 30860 | 28210 | 18950 | 30420 | 18950 | 13880 |
| 23 | 29100 | 29100 | 28650 | 29760 | 28210 | 27330 | 28210 | 18950 | 28880 | 18950 | 13880 |
| 26 | 24250 | 26450 | 24250 | 25350 | 26450 | 23140 | 26010 | 18950 | 24690 | 18950 | 13880 |
| 30 | | 22480 | 20500 | 22040 | 22700 | 19840 | 22040 | 18950 | 19840 | 18950 | 13880 |
| 33 | | 20500 | 18070 | 19400 | 20500 | 17410 | 20280 | 18950 | 18730 | 18950 | 13880 |
| 36 | | 17630 | 15210 | 16530 | 17410 | 14320 | 16970 | 18510 | 15430 | 17850 | 13880 |
| 39 | | 14990 | 12780 | 13880 | 14990 | 12120 | 14770 | 16090 | 13220 | 15430 | 13880 |
| 43 | | | | 12120 | 12780 | 10360 | 12780 | 14100 | 11240 | 13220 | 13880 |
| 46 | | | | 10360 | 11240 | 8590 | 11240 | 12340 | 9700 | 11680 | 12780 |
| 49 | | | | 9030 | 9920 | 7270 | 9700 | 11020 | 8370 | 10360 | 11460 |
| 52 | | | | 7930 | 8810 | 6170 | 8590 | 9920 | 7050 | 9030 | 10140 |
| 59 | | | | | | | 6610 | 7930 | 5290 | 7050 | 8150 |
| 66 | | | | | | | | | | 5730 | 6830 |
| 72 | | | | | | | | | | 4620 | 5510 |
| 2nd | 0 | 0% | 50% | 50% | 0 | 100% | 50% | 0 | 100% | 50% | 0 |
| 3rd | 0 | 16.70% | 0% | 16.70% | 33.30% | 0 | 33.30% | 50% | 16.70% | 50% | 66.70% |
| 4th | 0 | 16.70% | 0% | 16.70% | 33.30% | 0 | 33.30% | 50% | 16.70% | 50% | 66.70% |
| 5th | 0 | 16.70% | 0% | 16.70% | 33.30% | 0 | 33.30% | 50% | 16.70% | 50% | 66.70% |



| | 88.9 ft | 102.1 ft | 102.1 ft | 102.1 ft | 115.4 ft | 115.4 ft | 115.4 ft | 128.6 ft | 128.7 ft | 142 ft |
|--|---------|----------|----------|----------|----------|----------|----------|----------|----------|--------|
|--|---------|----------|----------|----------|----------|----------|----------|----------|----------|--------|

| | | | | | | | | | | | |
|-----|--------|--------|--------|-------|--------|------|--------|------|--------|------|--|
| 15 | 28210 | | | | | | | | | | |
| 16 | 27550 | | | | | | | | | | |
| 18 | 26890 | | | | | | | | | | |
| 20 | 25350 | | | | | | | | | | |
| 21 | 24250 | 13880 | 10360 | 18950 | | | | | | | |
| 23 | 23360 | 13880 | 10360 | 18070 | 10360 | 8370 | 13880 | 8370 | 10360 | | |
| 26 | 21820 | 13880 | 10360 | 16750 | 10360 | 8370 | 13880 | 8370 | 10360 | 8370 | |
| 30 | 20280 | 13880 | 10360 | 15650 | 10360 | 8370 | 13220 | 8370 | 10360 | 8370 | |
| 33 | 18070 | 13880 | 10360 | 14770 | 10360 | 8370 | 13000 | 8370 | 10360 | 8370 | |
| 36 | 16530 | 13880 | 10360 | 14100 | 10360 | 8370 | 12780 | 8370 | 10360 | 8370 | |
| 39 | 14320 | 13880 | 10360 | 13440 | 10360 | 8370 | 12560 | 8370 | 10360 | 8370 | |
| 43 | 12120 | 13220 | 10360 | 12560 | 10360 | 8370 | 11680 | 8370 | 10360 | 8370 | |
| 46 | 10580 | 12120 | 10360 | 11020 | 10360 | 8370 | 10800 | 8370 | 10140 | 8150 | |
| 49 | 9250 | 10800 | 10360 | 9700 | 10360 | 8370 | 9700 | 8370 | 9250 | 7930 | |
| 52 | 8150 | 9470 | 10140 | 8370 | 9700 | 8370 | 8810 | 7930 | 8590 | 7490 | |
| 59 | 5950 | 7490 | 8370 | 6610 | 7710 | 7710 | 6830 | 7710 | 7270 | 6390 | |
| 66 | 4620 | 5950 | 7050 | 5070 | 6390 | 7050 | 5510 | 6610 | 5730 | 5950 | |
| 72 | 3300 | 4850 | 5510 | 3960 | 5070 | 5950 | 4180 | 5290 | 4620 | 4850 | |
| 79 | | 3960 | 4850 | 2860 | 4180 | 5070 | 3300 | 4400 | 3520 | 3740 | |
| 85 | | 3080 | 3740 | 1980 | 3300 | 4180 | 2420 | 3520 | 2640 | 2860 | |
| 92 | | | | | 2640 | 3520 | 1540 | 2860 | 1980 | 2200 | |
| 98 | | | | | 1980 | 2640 | 1100 | 1980 | 1320 | 1540 | |
| 105 | | | | | | | | 1540 | 880 | 1100 | |
| 112 | | | | | | | | 1100 | | 660 | |
| 2nd | 100% | 50% | 0 | 100% | 50% | 0 | 100% | 50% | 100% | 100% | |
| 3rd | 33.30% | 66.70% | 83.30% | 50% | 83.30% | 100% | 66.70% | 100% | 83.30% | 100% | |
| 4th | 33.30% | 66.70% | 83.30% | 50% | 83.30% | 100% | 66.70% | 100% | 83.30% | 100% | |
| 5th | 33.30% | 66.70% | 83.30% | 50% | 83.30% | 100% | 66.70% | 100% | 83.30% | 100% | |

Table of Main Technical Parameters

| Category | | Item | | Unit | Parameter |
|--------------------------|--|---------------------------|------------|---------|-----------|
| Main Lifting Performance | Max. total rated lifting capacity | | | USt | 40 |
| | Min. rated working radius | | | ft | 5 |
| | Tail swing at turntable tail | | | ft | 10.43 |
| | Max. load moment | Base boom | | lb-ft | 708000 |
| | | Fully-extended boom | | lb-ft | 393000 |
| | | Fully-extended boom + Jib | | lb-ft | 112000 |
| | Outrigger span | Longitudinal | | ft | 20.3 |
| | | Lateral | | ft | 23.6 |
| | Hoist height | Base boom | | ft | 37 |
| | | Fully-extended boom | | ft | 141 |
| | | Fully-extended boom + Jib | | ft | 197 |
| | Boom length | Base boom | | ft | 35.8 |
| | | Fully-extended boom | | ft | 142 |
| | | Fully-extended boom + Jib | | ft | 195.5 |
| Jib offset angle | | | ° | 0,15,30 | |
| Boom raising time | | | s | ≤35 | |
| Boom fully extended time | | | s | ≤70 | |
| Working Speed | Slewing speed | | | rpm | 0~1.2 |
| | Outrigger extending and retracting time | Outrigger beam | Retracting | s | ≤35 |
| | | | Extending | s | ≤35 |
| | | Outrigger jack | Retracting | s | ≤40 |
| | | | Extending | s | ≤40 |
| | Hoisting speed (single line, 4th layer, no load) | | Main winch | fpm | ≥443 |

Optimum Services , XCMG Guaranteed



XCMG approved attachments



Genuine parts



Financial solutions



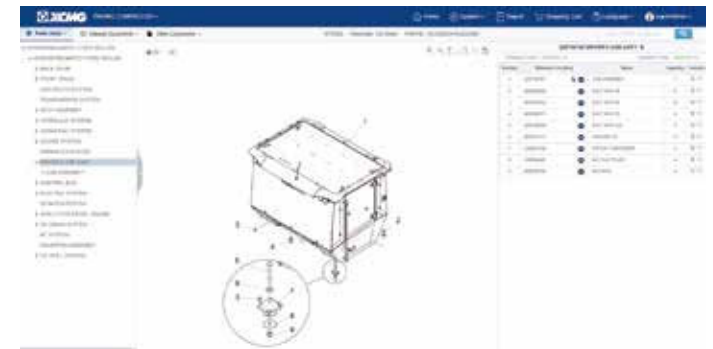
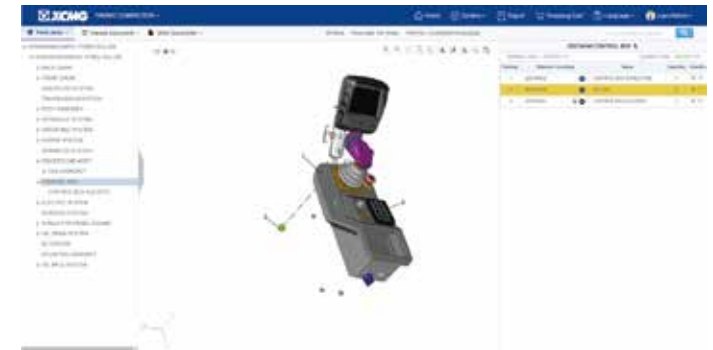
Maintenance contract



Full Range of Services Ready for You

In order to respond to your needs as fast as possible, XCMG experts can be dispatched to your job site from a facility near you. A full range of services are available to reduce your total cost of ownership and increase your revenue.

XCMG Global Spare Parts System



Professional Integrated Complete Solutions

XCMG group has built a strong reputation based on the quality, reliability and durability of its construction machinery. XCMG has established a world wide service and parts network to provide support to every customer regardless of location.



Mobile cranes



Excavators



Aerial work platforms



Wheel loaders



Road machinery

