

SOLID TO SUCCEED.



# GR

# GR3505T Pro



ROAD MACHINERY

# GR3505T Pro

## PRODUCT FEATURE:

▶ The GR3505T Pro motor grader is a construction machine used in open pit mines for haul road shaping and leveling operations. It is characterized by strong power, efficient operation and comfortable and intelligent control performance. The machine is mainly used for heavy duty soil and rock leveling in open pit mines, but also for snow removal, material paving and side trenching in open pit mines. The machine has sufficient power, reliable and durable, and high operation comfort, which is the ideal leveling equipment in the maintenance and repair of the road surface of open pit mine.

XCMG North America Corporation  
305 Equipment Ct. Suite A  
Lawrenceville, GA 30043  
+1 725-605-2777  
letsgo@xcmgusa.com  
xcmg-usa.com



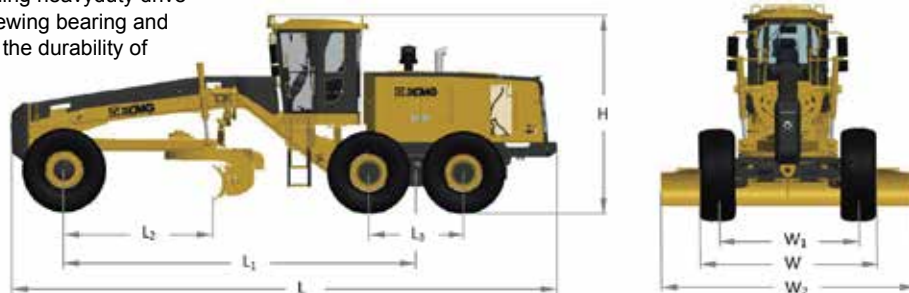
# MAIN DIMENSIONS

CONTENT		UNIT	GR3505TPRO
Basic parameter			
Engine model			QSM11
Rated power/speed		kW/rpm	261/2,100
Machine dimension (standard)		mm	11,320 x 3,400 x 4,100
Machine weight (standard)		kg	32,000
Tire specification			23.5R25
Wheel track		mm	625
Axle distance between front and rear		mm	2,700
Wheel base between middle and rear		mm	7,300
Performance parameters			
Drive speed, forward		km/h	5.8/8.5/13/20/30/45
Drive speed, reverse		km/h	5/13/30
Traction force f=0.75		kN	≥ 160
Maximum gradeability		%	≥ 30
Tire inflation pressure		kPa	475
Work system pressure		MPa	25
Transmission box pressure		MPa	1.6 ± 0.2
Working parameters			
Maximum steering angle, front wheel		°	± 48
Allowable tilt angle, front wheel		°	± 17
Maximum oscillation, front axle		°	± 15
Maximum oscillation, balance box		°	Front 15 rear 15
Maximum steering angle, frame		°	± 23
Minimum turning radius		m	9.6
Maximum lift above ground		mm	470
Maximum cutting depth		mm	660
Maximum tilt angle		°	90
Blade	Cutting angle	°	Front 40 rear 5
	Swivel angle	°	360
	Length x Height	mm	4,877 x 686
Capacities			
Coolant		L	50
Fuel tank		L	550
Engine		L	37
Transmission box		L	38
Balance box		L	93 each
Drive axle		L	106
Hydraulic oil		L	210

## PERFORMANCE AND CHARACTERISTICS

- Powerful and efficient construction performance, optimized weight and power matching, providing strong traction output, which can easily cope with sudden and short time load surges.
- Comfortable and intelligent control experience, equipped with electric doublelever control and intelligent pane control, which greatly reduces the driver's control intensity.
- Durable structure design, equipped with mining heavyduty drive rear axle, integral angle sensor, highstrength slewing bearing and overload protection worm gear box, to enhance the durability of the machine.

- Convenient and centralized maintenance, convenient and centralized daily filter cartridge and oil replacement, the whole vehicle is equipped with intelligent monitoring and fault diagnosis system.
- Solid and sufficient safety guarantee, equipped with wet brake, hydraulic locking, ground break switch, double emergency stop control, reversing image and other systems to ensure the safe use of equipment.



MAIN DIMENSIONS								UNIT:MM	
MODEL	L	L1	L2	L3	H	W	W1	W2	
GR3505T Pro	9,448	6,625	2,580	1,771	3,500	2,895	2,450	4,270	