

Mini Hydraulic Excavator

# XE950G



XCMG FOR YOUR SUCCESS

- Bucket Capacity (ft<sup>3</sup>) : 212
- Operation Weight (lb) : 200621
- Output power (HP/rpm) : 600/2000

XCMG North America Corporation  
305 Equipment Ct. Suite A  
Lawrenceville, GA 30043  
+1 725-605-2777  
[letsgo@xcmgusa.com](mailto:letsgo@xcmgusa.com)  
[xcmg-usa.com](http://xcmg-usa.com)



SCAN ME







## INTRODUCTION OF XCMG

Founded in 1943, XCMG is the largest enterprise in the Chinese construction machinery industry. We offer the most diverse product line and the highest technological standards. We provide a comprehensive set of construction solutions, and we are the most internationally competitive firm in the industry. On KHL Yellow Table, we rank No. 1 in China and No.3 globally.

Across our offices in China, the US, Germany, India, and Brazil, XCMG has established a global collaborative research platform including national-level R&D facilities focused on advanced smart manufacturing technology. Our R&D team consists of top talents from around the globe. They are researching cutting-edge technologies such as new energy, unmanned driving and high-end parts. Our work has earned us numerous international patents and awards.

XCMG has the most comprehensive product line, meaning we can offer fully comprehensive solutions in 9 areas: hoisting, earthwork, road building & maintenance, mining, concrete & paving, tunnel-building & underground construction, high-altitude firefighting equipment & special-purpose vehicles, railway & bridge construction, sanitation engineering. All these solutions can be customized to suit our customers' needs.

At XCMG, our five-continent sales network gives our products worldwide visibility. We have 300 overseas distributors, over 10 overseas manufacturing bases and KD (Knockdown) factories, and products in more than 180 countries and regions. We supply our global customers with pre-sales, mid-sales and after-sales service, and a convenient, efficient one-stop financing and leasing service. XCMG's total annual exports and overseas income consistently come top of the industry in China.

We care deeply for the welfare of the people. We support numerous charitable causes, and are quick to the scene during disaster relief efforts.

XCMG is all set to become an eternal brand with our feet on the ground and eyes on the horizon. XCMG's ambition leads us forever forwards. XCMG is scaling its Everest, and is determined to reach the top.

## More energy-conservation and environmental protection

XE950G/XE950GA: It adopts imported Perkins (2806J/ 2806EA) electronic control, direct injection, 4-stroke, water cooling, turbocharging, air-to-air intercooling and six-cylinder high-torque low-speed engine.

The engine has the advantages of high reliability and high adaptability. Its emission meets the standards of China's Stage IV, North America Tier 4F and European Stage V. It is specially designed and manufactured for the working conditions of construction machinery.

## More efficient return

The standard 6.2m<sup>3</sup> heavy-duty bucket has higher operating efficiency;

Large torque, large displacement engine and high pressure hydraulic system are more competent for heavy load operation in mining area;

XEICS system with independent intellectual property rights can accurately debug the hydraulic and power matching, and improve the operation efficiency by 12%.



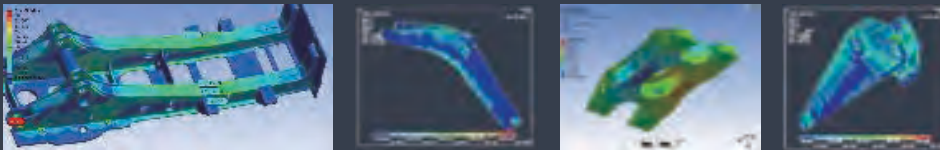




# More reliable and durable



- The thickness of the weak parts of the rotary platform, boom and bucket rod is increased, the bearing capacity is increased by 50% compared with the previous generation products, and the bending section modulus is greatly improved; the average stress of the newly designed structural parts is reduced by 30% compared with the previous generation products after CAE design analysis and rigorous impact measurement; the four-wheel one-belt of the vehicle is used to strengthen the bearing capacity of longitudinal beam and H-frame, strengthen the caterpillar, support roller, etc., and increase the load-bearing capacity by 30%.



- The advanced XEICS XCMG excavator intelligent management system adopts CAN bus communication and Internet of Things technology, integrates the main control system, engine ECM, monitoring system, control panel, GPS cloud control system and field diagnosis system to realize digital sharing of machine information and improve the intelligent level of products. Convenient mobile APP micro-service can grasp the location, operation status, working time, fuel consumption and maintenance cycle of excavator anytime and anywhere.

- The service life of key hydraulic components such as pumps, valves and motors can reach 30000 hours;
- The optional explosion-proof valve can prevent the working device from falling suddenly due to the damage of the pipeline, so that the safety is enhanced.
- The use of mining engines, reinforced cylinder block, camshaft, crankshaft and connecting rod, greatly extend the overhaul time; the electronically controlled unit pump fuel system adapted to the Chinese market greatly reduces the engine failure rate, improves the dust-proof ability and greatly reduces the risk of electrical parts failure and engine cylinder scratching.
- The key hydraulic components have been optimized. It uses larger diameter main valve, rotary reducer with an integrated output mechanism and a larger walking reducer, so that the machine can obtain greater hydraulic energy, greater rotary and walking driving force, more suitable for harsh mine construction.



- Full analysis of fault code: all fault codes are automatically parsed, the fault content is clear at a glance, and the tedious query manual is completely abandoned;
- Accessory management system: with this system, the operator can pre-select the required mode through the monitor in the cab to ensure the availability of various accessories.
- Rich operation modes: in addition to the standard ISO backhoe operation mode, the user can customize the operation mode to meet the operation habits of different users;
- Additional functions are more abundant: reverse dust removal fan, rear view image, maintenance reminder and other practical functions.

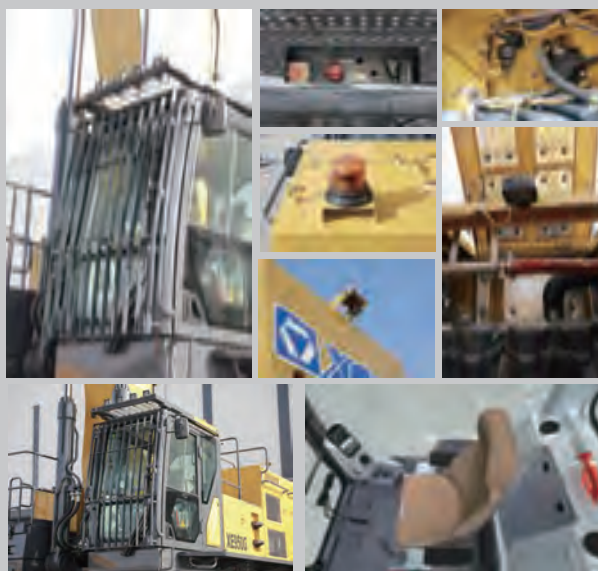
## More intelligent management and control



- The autonomous controller collects the altitude of vehicle position and engine intake pressure, automatically determines the database, and prompts the operator to select plateau mode on the display. It can intelligently match the power of the hydraulic pump and the engine, so as to ensure the flow output of the pump, reduce the engine speed drop ratio, prevent black smoke and engine stall, and ensure the working efficiency of the excavator.
- It can intelligently realize remote unmanned driving: Based on 5G, it can realize high-speed and low delay, break the limitation of time and space, restore the real scene, and realize the remote control of mining hydraulic excavator.

## More comfortable and safe

- According to the characteristics of long working time and large vibration in mine operation, air suspension seat is selected. By adjusting the synchronous height of armrest and seat, the driver's fatigue is reduced and the comfort is improved.
- The cab adopts a newly designed positive pressure cab, the sealing performance is improved by 70% compared with the previous generation. It can effectively isolate dust and greatly reduce the noise in the cab. At the same time, it expands the space of the cab and improves comfort.
- In view of the mine working conditions, the safety of the strengthened cab is 35% higher than that of the ordinary cab. The standard rear-view camera, alarm light, top protection net, front protection net, emergency stop switch, maintenance lamp, etc., and 360° panoramic image are selected to further improve the safety of mining operation.



## Convenient repair and maintenance



- The central maintenance channel can provide more convenient maintenance;
- You can directly enter the radiator compartment, air filter compartment, and pump room through the left and right channels for inspection;
- Centralized maintenance design is more convenient for maintenance;
- The easily accessible filling port is more convenient for maintenance.

# Main Specifications

## Hydraulic system

XE950G		
Main pump	2 Plunger pumps	2 Plunger pumps
Rated flow of main pump	2×476 L/min	105 gal/min
Pressure of prime valve	35 MPa	35 MPa
Pressure of travel system	35 MPa	35 MPa
Pressure of swing system	29 MPa	29 MPa
Pressure of pilot system	3.9 MPa	3.9 MPa

## Oil capacity

XE950G		
Fuel tank capacity	1200 L	264 gal
Hydraulic tank capacity	540 L	119 gal
Engine oil capacity	64 L	14 gall

## Appearance size

XE950G		
A Overall length	13655 mm	538 in
B Overall width	4545 mm	179 in
C Overall height	4980 mm	196 in
D Width of platform	3490 mm	137 in
E Length of crawler	6365 mm	251 in
F Overall width of chassis	4150 mm	163 in
G Width of crawler	650 mm	26 in
H Track length on ground	5090 mm	200 in
I Crawler gauge	3500 mm	138 in
J Clearance under counterweight	1660 mm	65 in
K Min. ground clearance	870 mm	34 in
L Min. tail swing radius	4700 mm	185 in
M Height of crawler	1487 mm	59 in

## Working scope

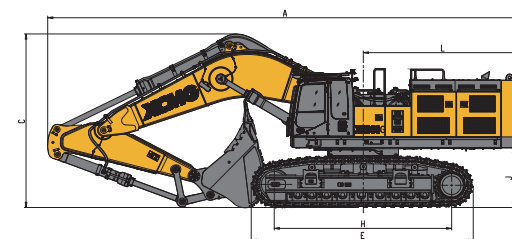
XE950G		
A Max. digging height	12680 mm	499 in
B Max. dumping height	7990 mm	315 in
C Max. digging depth	7170 mm	282 in
D Excavation depth of 8 feet level	7030 mm	277 in
E Max. vertical wall digging depth	4550 mm	179 in
F Max. digging reach	12660 mm	498 in
G Min. swing radius	5020 mm	198 in

## Standard

XE950G		
Length of Boom	7250 mm	285 in
Length of Arm	2925 mm	115 in
Bucket Capacity	6.2 m³	212 ft³

## Optional configuration

XE950G		
Length of arm	3400 mm	134 ft³
Bucket capacity	4.6 (Rock) m³	162 ft³
	5.4 (Rock) m³	191 ft³
	6.2 (Rock) m³	212 ft³
	6.7 (Strength) m³	230 ft³
	7.3 (Soil)	247 ft³
-40 °C low temperature configuration	Coolant heater	



## XE950G

Operation Weight	91000 kg	200621 lb
Bucket Capacity	6.2 m³	212 ft³

## Engine

### XE950G

Model	2806J/EA/D	2806J/EA/D
Direct injection	√	√
Four strokes	√	√
Water cooling	√	√
Turbo-charging	√	√
Air to air intercooler	√	√
No. of cylinders	6	6
Output power	447.5/2000(XE950G/GA)kW/rpm 447.5/2100(XE950DA)kW/rpm	600/2000 HP/rpm 447.5/2100 HP/rpm
Torque/speed	2811/1300(XE950G/GA)N.m/rpm 2742/1400(XE950DA)N.m/rpm	2811/1300 N.m/rpm 2742/1400 N.m/rpm
Displacement	18.1L	3.981 gal

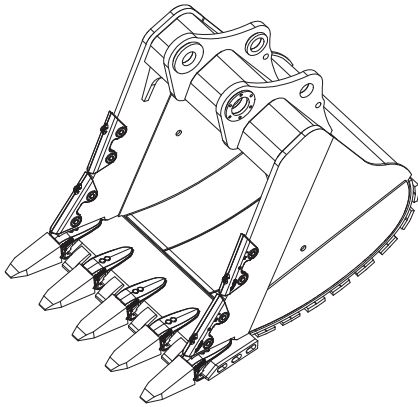
## Main performance

### XE950G

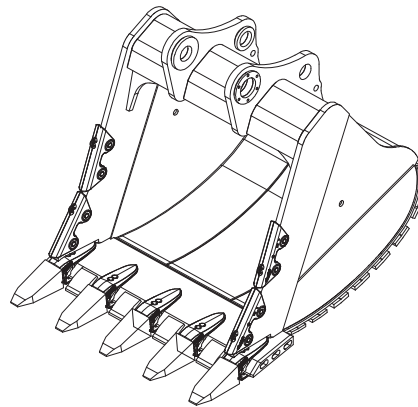
Travel speed (H/L)	4.0/2.4 km/h	2.5/1.5 mile/h
Rotating speed	6.2 r/min	6.2 r/min
Gradeability	35 °	35 °
Ground pressure	124 kPa	124 kPa
Bucket digging force	463 kN	463 kN
Arm digging force	370 kN	370 kN
Maximum traction	636 kN	636 kN



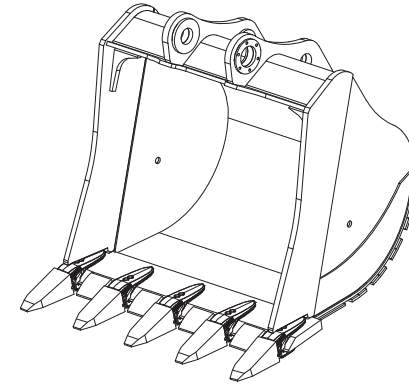
## Configuration of bucket



5.4m<sup>3</sup>



6.2m<sup>3</sup>



6.7m<sup>3</sup>

### Configuration of bucket

**XE950G/GA/DA**

Bucket type	Bucket capacity	Filling rate	Boom: 7250 mm Bucket rod: 2925 mm	Chassis type
	m <sup>3</sup>	%		
Light load excavation	7.3	100	○	Extended chassis
Common excavation	6.7	100	⊙	Extended chassis
Heavy load excavation	6.2 ( 标配 )	90	□	Extended chassis
	5.4	90	□	Extended chassis
	4.6	90	■	Extended chassis

■: Suitable for the material which density is less than 2100kg/m<sup>3</sup>  
 □: Suitable for the material which density is less than 1800kg/m<sup>3</sup>  
 ⊙: Suitable for the material which density is less than 1500kg/m<sup>3</sup>

○: Suitable for the material which density is less than 1200kg/m<sup>3</sup>  
 △: Suitable for the material which density is less than 900kg/m<sup>3</sup>

>Standard configuration

Engine
Model of engine：2806D/2806EA/2806J
Emission level：National III /National IV/Euro V
Oil-water seperator with water level indication sensor
Radial seal air filter
Cooling componnets of 50°C high temperature environment
Dust screen of radiator
Feul leveler
Independent cooling module with reverse blow function
Oil sampling
Antifreeze sampling
DEF Remote filling
Fuel breather valve
Air differential pressure indicator
Automatic idle speed

Hydraulic system
Boom/arm flow regeneration
Reverse rotary damping valve
Automatic rotary parking brake
Travel straight hydraulic circuits
Boom priority valve
Rotary logic valve
ISO VG 46 Hydraulic oil ISO VG 46
Gear oil sampling of rotary reducer
Hydraulic oil sampling
Operating modes switch
Rotary anti-sway valve
Spare valve disc
Instrument pressure monitor

>Optional configuration

Oil-water seperator with heater（24V）
Oil and water quick discharge device
Coolant heater(fuel type)
Fuel refueling pump 50L/min
Fast fill fuel system
OCV（open crankcase ventilation）filter
Jacket heating system
Auxiliary hydraulic valve
Hydraulic buffering valve
Hydraulic line: quartering hammer
Hydraulic line: thumb pliers and cylinder
Hydraulic line:pipeline of explosion-proof valve and cylinder
Hydraulic pipeline:quick connector
Hydraulic line:hydraulic shear
Hydraulic line:hydraulic vibration rammer/high-frequency breaker

Cab and interior trimming
Pressurized cab
Completely adjustable air suspension seat
Adjustable armrest
Safety belt（51 mm [2"] width）
Openable front windscreen glass equipped with auxiliary equipment
Front windscreen window cut with ratio of 70/30
Double-layer laminated windshield and other tempered Windows
Slidable upper window of door
Double-way air-out air conditioner with defroster(automatic)(pressurized)
Color LCD display with data of alm, filter/fluid change and working hours
Control handle
Travel control pedal with removable manual control lever
Two stereo speakers
Beverage holder
Coat and hat hook
Washable floor mat
Air conditioner system
High/low speed shift gears
Shade curtain
Top skylight
Wiper
Cup holder/file packet
Heating and cooling storage box
Wireless radio

Chassis sytem and protective guard
Underframe bail
Protection suite：
close plate at the bottom of chassis, close plate of travel motor
650 mm（24"）Double rib track plate
Extended chassis
Overall length crawler guardrail device

Safety and security configuration
Door lock of cab and chambers
Alarm horn
Spacer plate between engine and oil pump chamber
Emergency stop switch of engine
Emergency exit of rear window
Shutdown switch of battery
Holding valve of boom and arm
Overheat alarm
Safety rail and pedal
Rotating alarm light
Anti-skid plate/anti-slip tip
Hydraulic safety lock lever
Emergency escape hammer
Left and right rearview mirror
Rearview monitor camera
Fall Off Proteciton Structure(FOPS)

Lamp
Boom working lamp at left and right side
Working lamp installed on the right side of storage box
Lamp inside the cab
Front working lamp installed on the top of cab
Rear working lamp installed on the top of cab

Working device
Boom 7.25m
Arm 2.925m
Bucket 6.0m3 Strengthen Bucket

Counterweight
12.4t Conuterweight

Quartering hammer
Hydraulic thumb pliers
Scarifier
Vibrating tamper
Hydraulic shear
Grip
High frequency braker
Clam shell bucket
Plum-blossom shape grab bucket
Screen-type bucket
Strengthen rock boom
Arm concentration
Quick oil filling system
Hydraulic oil quick filling system

Electrical system
Battery（4×950 CCA）
95 A Alternator
9.5 kW start motor
Travel alarm
Camera
5V USB interface
12/24V Power interface

Lubrication system
Electric single line self lubricating system

Technology
XEICS intelligent control system
Data link socket



# Optimum Services , XCMG Guaranteed



XCMG approved attachments

Genuine parts

Extension of warranty

Financial solutions

Maintenance contract

Telematics



## Professional Integrated Complete Solutions

XCMG group has built a strong reputation based on the quality, reliability and durability of its construction machinery. What's more, XCMG has gradually established a service network to constantly provide its local integrated and highly efficient complete solutions for all customers.

## Full Range of Services Ready for you

In order to respond to your needs as fast as possible, XCMG experts are on their way to your job site from one of our facilities near you. Full range of services are available in order to reduce your total cost of ownership and increase your revenue.

## XCMG Global Spare parts System



Mobile cranes



Excavators



Aerial work platforms



Wheel loaders



Road machinery







# Memorandum

---

---

---

---

---

---

---

---

---

---

---

---

