

BOOM/JIB COMBINATIONS



BOOM

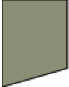


T: 35.8 ft-142 ft


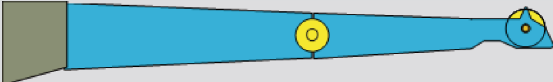
BOOM + 1ST JIB SECTION

T: 35.8 ft-142 ft
J: 30.5 ft

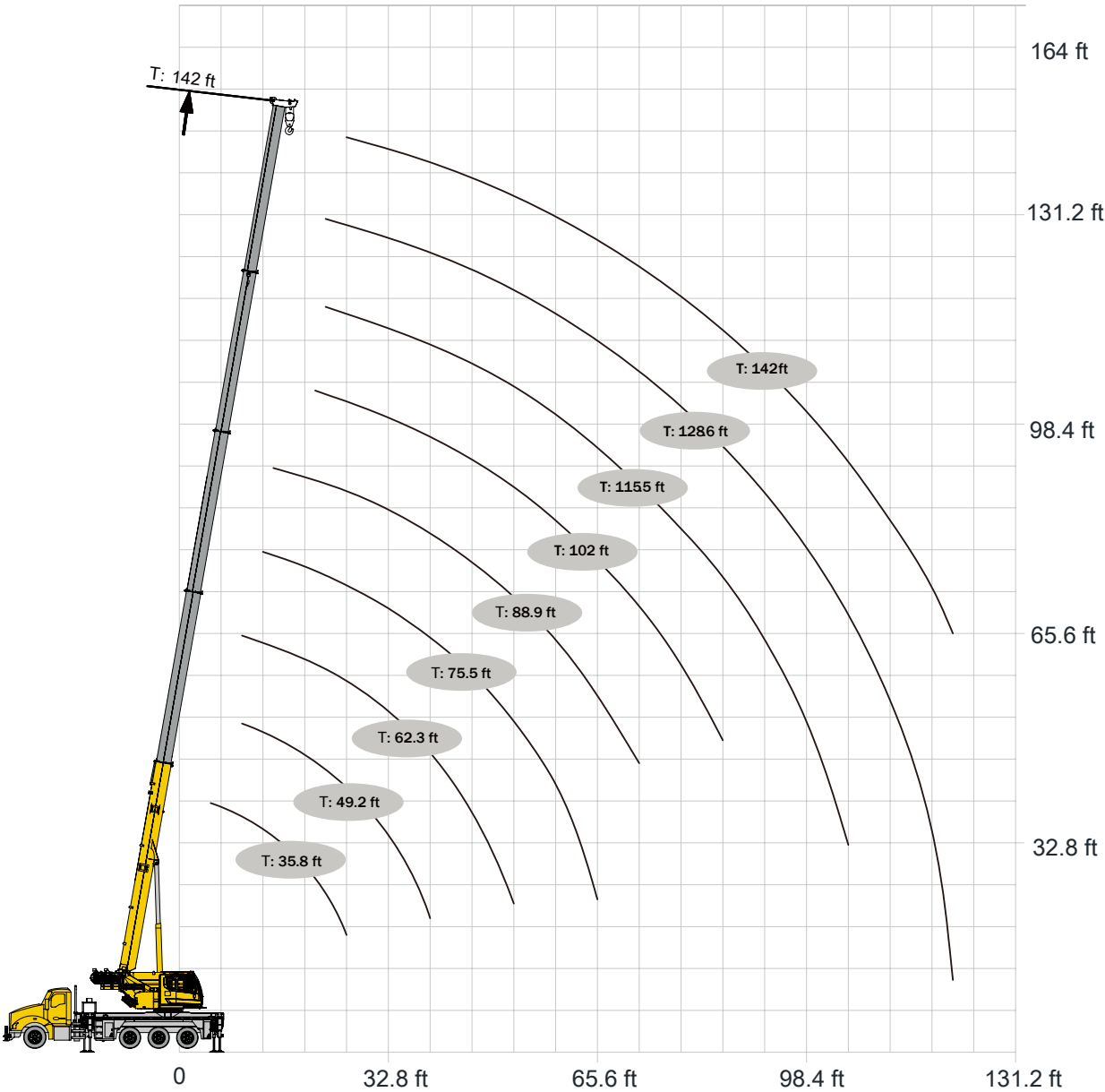
BOOM + 2 JIB SECTIONS

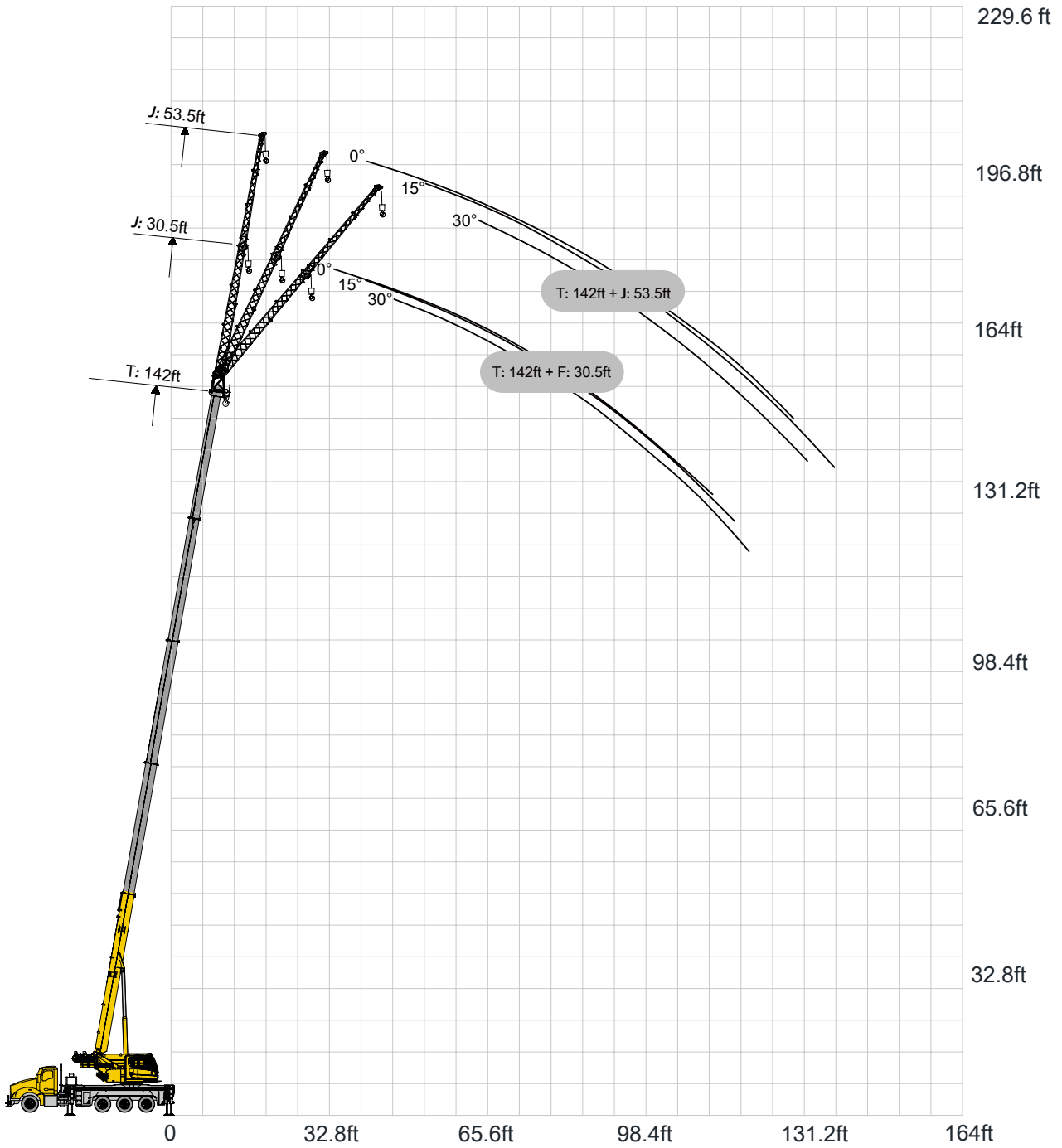
T: 35.8 ft-142 ft
J: 53.5 ft

COMPONENTS	STRUCTURE
Connecting bracket	
The 1st jib section assembly	
The 2nd jib section assembly	

FIXED JIB	STRUCTURE TYPE
Fixed jib— 30.5 ft	
Fixed jib— 53.5 ft	

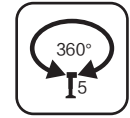
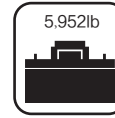
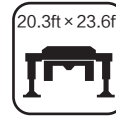
WORKING RANGE DIAGRAM FOR BOOM





LOAD CHARTS

ASME



Boom Extension



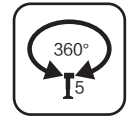
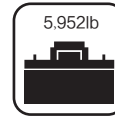
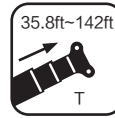
Horizontal Extension

	35.8	49.2	62.3	75.5	88.9	102	115.5	128.6	142	
4.9	89,948*									4.9
6.6	70,547									6.6
8.2	61,729									8.2
9.8	55,115	46,297	41,667							9.8
11.5	54,013	46,297	41,667							11.5
13.1	49,604	46,076	41,667	30,864						13.1
14.8	46,297	44,092	41,667	30,864	28,660					14.8
16.4	43,210	40,565	38,581	30,864	27,558					16.4
18	39,021	37,919	35,715	30,864	26,896					18
19.7	34,833	35,053	33,510	3,0864	25,353					19.7
21.3	31,746	30,864	30,864	30,423	24,251	18,960				21.3
23	29,321	29,542	29,983	28,880	23,369	18,960	14,550	10,803		23
26.2	24,471	26,896	26,676	2,6014	21,826	16,755	14,550	10,803	8,818	26.2
27.9	21,826	24,912	24,912	24,251	213,85	16,314	13,889	10,803	8,818	27.9
28.2	21,164	24,471	24,471	2,3810	21,164	16,094	13,669	10,803	8,818	28.2
28.5	20,723	24,030	24,251	23,369	21,164	16,094	13,669	10,803	8,818	28.5
29.5		22,707	23,148	22,266	20,723	15,653	13,228	10,803	8,818	29.5
32.8		20,723	20,503	20,503	19,841	14,991	13,007	10,803	8,818	32.8
36.1		17,857	17,637	18,739	17,857	14,550	12,787	10,582	8,818	36.1
39.4		15,212	15,212	16,314	15,432	13,889	12,566	10,582	8,818	39.4
41.3		14,109	13,889	15,212	14,330	13,448	12,125	10,362	8,818	41.3
41.7		13,889	13,669	14,991	14,109	13,448	11,905	10,362	8,818	41.7
42		13,669	13,448	14,771	13,889	13,448	11,905	10,362	8,818	42
42.7			13,007	14,330	13,889	13,228	11,684	10,362	8,818	42.7
45.9			11,684	12,787	12,787	12,125	10,803	10,141	8,157	45.9
49.2			10,141	11,243	11,464	10,803	10,362	9,259	7,937	49.2
52.5			9,039	10,362	10,141	10,141	9,700	8,598	7,496	52.5
54.5			8,377	9,700	9,700	9,700	9,259	8,157	7,275	54.5
54.8			8,377	9,700	9,480	9,480	9,039	8,157	7,055	54.8
55.1			8,157	9,480	9,480	9,480	9,039	8,157	7,055	55.1

* Capacity class.

Less Flex, More Lift

ASME



Boom Extension

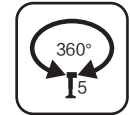
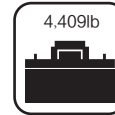
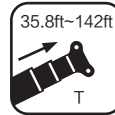


Horizontal Extension

	35.8	49.2	62.3	75.5	88.9	102	115.5	128.6	142	
59.1				8,377	8,377	8,377	7,937	7,716	6393	59.1
65.6				6,834	7,055	7,055	7,055	6,614	5952	65.6
67.6				6,173	6,834	6,834	6,834	6,173	5732	67.6
67.9				6,173	6,614	6,614	6,614	6,173	5512	67.9
68.2				5,952	6,614	6,614	6,614	6,173	5512	68.2
72.2					5,952	5,952	5,952	5,291	4850	72.2
78.7					4,850	5,071	5,071	4,630	3748	78.7
81					4,409	4,850	4,850	4,409	3527	81
81.4					4,189	4,630	4,630	4,189	3527	81.4
81.7					4,189	4,630	4,630	4,189	3527	81.7
85.3						4,189	4,189	3,748	3086	85.3
91.9						3,527	3,527	3,086	2425	91.9
94.2						3,086	3,307	2,866	2205	94.2
94.5						3,086	3,307	2,866	2205	94.5
94.8						3,086	3,307	2,866	2205	94.8
98.4							3,086	2,425	1984	98.4
105							2,646	1,984	1323	105
107.3							2,205	1,764	1102	107.3
107.6							2,205	1,764	1102	107.6
107.9							2,205	1,764	1102	107.9
111.5								1,543	882	111.5
118.1								1,102	661	118.1
121.4								882	441	121.4

LOAD CHARTS

ASME



Boom Extension

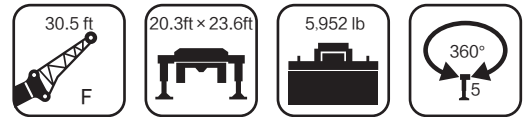







Horizontal Extension

	35.8	49.2	62.3	75.5	88.9	102	115.5	128.6	142	
4.9	89,948*									4.9
6.6	70,547									6.6
8.2	61,729									8.2
9.8	55,115	46,297	41,667							9.8
11.5	54,013	46,297	41,667							11.5
13.1	49,604	46,076	41,667	30,864						13.1
14.8	46,297	44,092	41,667	30,864	28,660					14.8
16.4	43,210	40,565	38,581	30,864	27,558					16.4
18	39,021	37,919	35,715	30,864	26,896					18
19.7	34,833	35,053	33,510	30,864	25,353					19.7
21.3	31,746	30,864	30,864	30,423	24,251	18,960				21.3
23	29,101	29,101	29,983	28,880	23,369	18,960	14,550	10,803		23
26.2	24,251	26,455	26,676	26,014	21,826	16,755	14,550	10,803	8,818	26.2
29.5		22,487	22,707	22,046	20,723	15,653	13,228	10,803	8,818	29.5
32.8		20,503	20,503	20,282	18,960	14,991	13,007	10,803	8,818	32.8
36.1		17,637	17,416	18,519	17,857	14,550	12,787	10,582	8,818	36.1
39.4		14,991	14,991	16,094	15,432	13,889	12,566	10,582	8,818	39.4
42.7			12,787	14,109	13,889	13,228	11,684	10,362	8,818	42.7
45.9			11,243	12,346	12,787	12,125	10,803	10,141	8,157	45.9
49.2			9,921	11,023	11,464	10,803	10,362	9,259	7,937	49.2
52.5			8,818	9,921	10,141	10,141	9,700	8,598	7,496	52.5
59.1				7,937	8,157	8,377	7,716	7,716	6,393	59.1
65.6					6,834	7,055	7,055	6,614	5,952	65.6
72.2					5,512	5,512	5,952	5,291	4,630	72.2
78.7						4,850	5,071	4,409	3,748	78.7
85.3						3,748	4,189	3,527	2,866	85.3
91.9							3,527	2,866	2,205	91.9
98.4							2,646	1,984	1,543	98.4
105								1,543	1,102	105
111.5								1,102	661	111.5

* Capacity class.

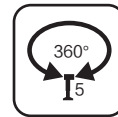
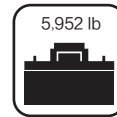
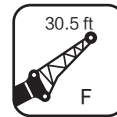
LOAD CHARTS



		102			115.5				
		 T		0°	15°	30°	0°		
79			11,023	6,834	3,307	9,259	6,393	3,086	79
78			10,803	6,393	3,086	9,259	5,952	3,086	78
75			9,700	5,732	2,866	9,039	5,512	2,866	75
72			9,039	5,291	2,866	8,157	5,071	2,646	72
70			8,598	4,850	2,646	7,496	4,850	2,646	70
65			6,614	4,409	2,646	5,512	4,189	2,425	65
60			4,850	3,968	2,425	3,968	3,527	2,425	60
55			3,527	3,307	2,205	2,866	2,646	2,205	55
50			2,646	2,425	2,205	1,984	1,984	1,764	50

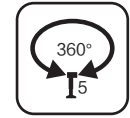
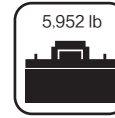
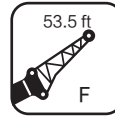
BOOM TRUCK XCT45_U





Less Flex, More Lift



		128.6			142				
		0°	15°	30°	0°	15°	30°		
79		6,834	5,952	3,307	3,748	3,307	2,646	79	
78		6,614	5,732	3,086	3,527	3,307	2,646	78	
75		6,393	5,291	2,866	3,307	3,307	2,646	75	
72		6,173	4,850	2,646	3,086	3,086	2,425	72	
70		5,732	4,409	2,646	2,866	2,866	2,425	70	
65		4,189	3,527	2,425	2,866	2,646	2,425	65	
60		3,086	2,646	2,205	2,646	2,425	2,205	60	
55		2,205	1,984	1,764	1,984	1,764	1,543	55	
50		1,323	1,323	1,323	1,323	1,102	1,102	50	

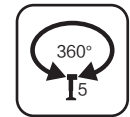
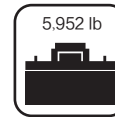
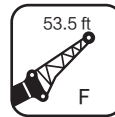
LOAD CHARTS







		 T	102			115.5			 T	
			0°	15°	30°	0°	15°	30°		
79			6,614	2,866	1,543	5,512	2,866	1,543		79
78			5,952	2,866	1,543	5,071	2,866	1,323		78
75			5,291	2,646	1,323	4,630	2,425	1,102		75
72			4,630	2,425	1,102	4,409	2,425	1,102		72
70			4,409	2,205	1,102	4,189	2,205	1,102		70
65			3,748	1,984	1,102	3,527	1,984	1,102		65
60			3,307	1,764	1,102	3,086	1,543	882		60
55			2,646	1,323	882	2,205	1,323	882		55
50			1,984	1,102	882	1,323	882	661		50

BOOM TRUCK XCT45_U

Less Flex, More Lift



			128.6			142				
			0°	15°	30°	0°	15°	30°		
79			4,630	2,866	1,323	2,205	1,102	661	79	
78			4,409	2,646	1,102	1,984	1,102	661	78	
75			4,189	2,425	882	1,984	1,102	441	75	
72			3,968	2,205	882	1,764	882	441	72	
70			3,748	1,984	882	1,543	882	441	70	
65			3,086	1,543	661	1,323	882	441	65	
60			2,205	1,323	661	1,102	661	441	60	
55			1,543	882	441	882	441		55	
50			1,102	661		661			50	