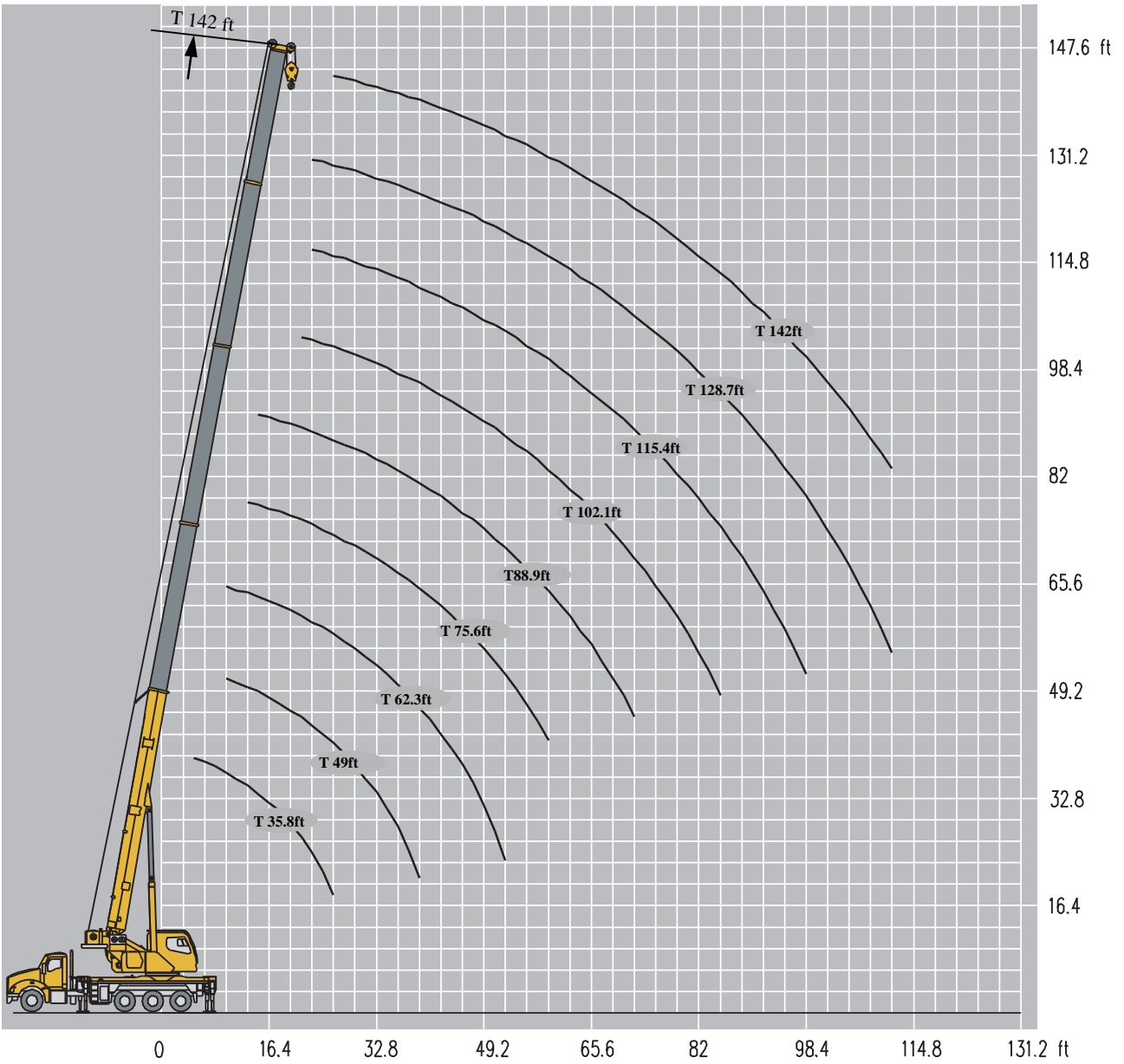


BOOM	BOOM + ONE JIB SECTION	BOOM + TWO JIB SECTIONS
T: 35.8~142 ft	T: 142 ft J: 30.5 ft	T: 142 ft J: 30.5~53.5 ft

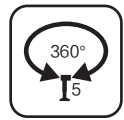
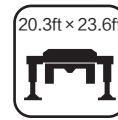


# WORKING RANGE DIAGRAM

## BOOM



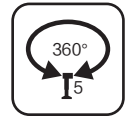
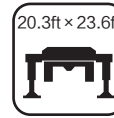
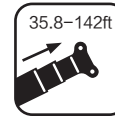
**T 35.8~142ft**



	35.8 ft	49 ft	49 ft	62.3 ft	62.3 ft	62.3 ft	75.6 ft	75.6 ft	75.6 ft	88.9 ft	88.9 ft	
5	80020											5
7	70540											7
8	61720											8
10	55110	30860	44090	30860	28210	39680						10
11	55110	30860	44090	30860	28210	39680						11
13	49600	30860	43870	30860	28210	39680	28210	18950	30860			13
15	46290	30860	43650	30860	28210	39680	28210	18950	30860	18950	13880	15
16	43210	30860	40560	30860	28210	38580	28210	18950	30860	18950	13880	16
18	39020	30860	37910	30860	28210	35710	28210	18950	30860	18950	13880	18
20	34830	30860	35050	30860	28210	33500	28210	18950	30860	18950	13880	20
21	31740	29760	30860	30860	28210	30860	28210	18950	30420	18950	13880	21
23	29100	29100	28650	29760	28210	27330	28210	18950	28880	18950	13880	23
26	24250	26450	24250	25350	26450	23140	26010	18950	24690	18950	13880	26
30		22480	20500	22040	22700	19840	22040	18950	19840	18950	13880	30
33		20500	18070	19400	20500	17410	20280	18950	18730	18950	13880	33
36		17630	15210	16530	17410	14320	16970	18510	15430	17850	13880	36
39		14990	12780	13880	14990	12120	14770	16090	13220	15430	13880	39
43				12120	12780	10360	12780	14100	11240	13220	13880	43
46				10360	11240	8590	11240	12340	9700	11680	12780	46
49				9030	9920	7270	9700	11020	8370	10360	11460	49
52				7930	8810	6170	8590	9920	7050	9030	10140	52
59							6610	7930	5290	7050	8150	59
66										5730	6830	66
72										4620	5510	72
	0	0%	50%	50%	0	100%	50%	0	100%	50%	0	
	0	16.70%	0%	16.70%	33.30%	0	33.30%	50%	16.70%	50%	66.70%	
	0	16.70%	0%	16.70%	33.30%	0	33.30%	50%	16.70%	50%	66.70%	
	0	16.70%	0%	16.70%	33.30%	0	33.30%	50%	16.70%	50%	66.70%	

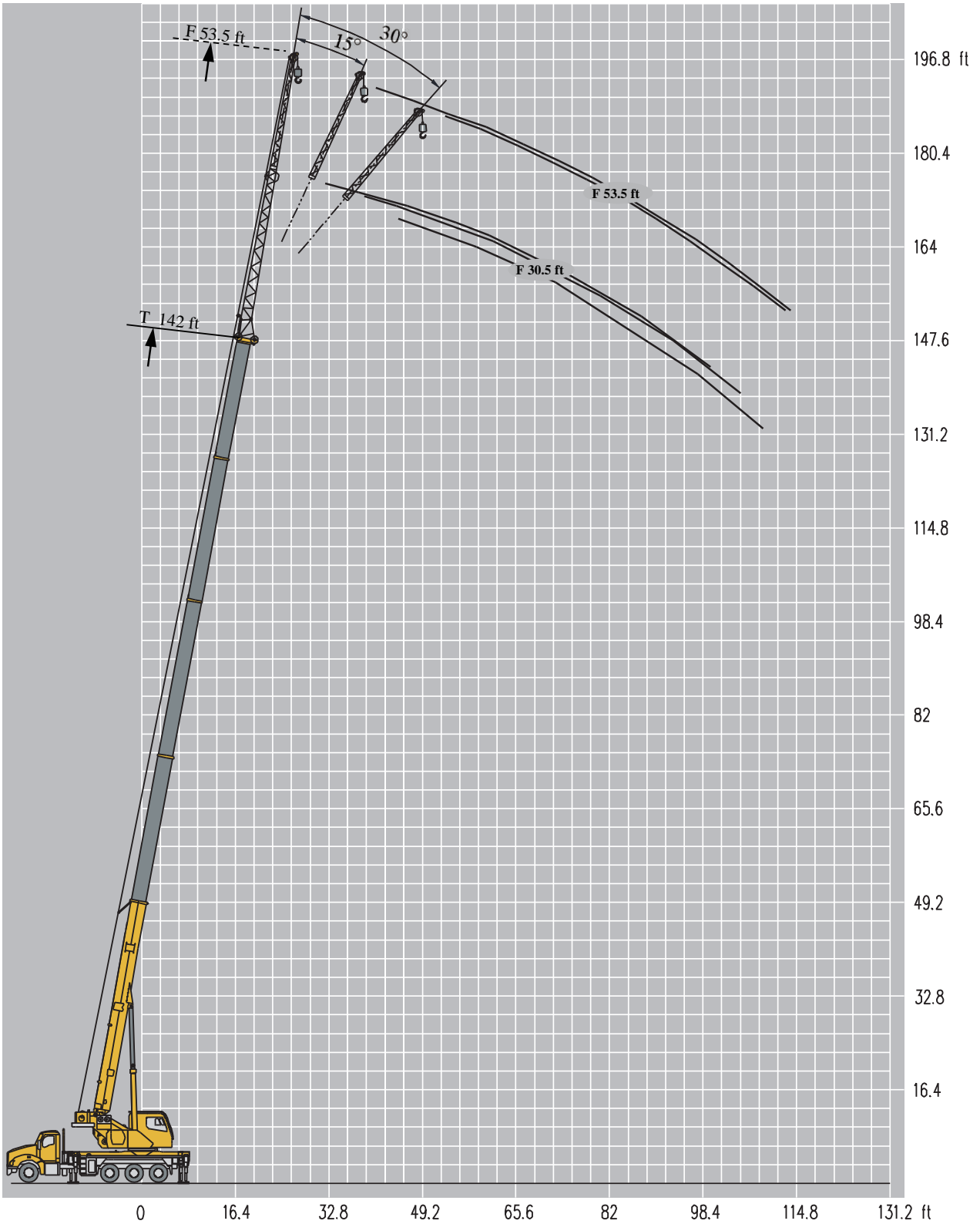
# LOAD CHARTS

## T 35.8 ~ 142 ft



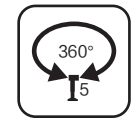
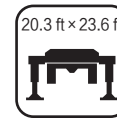
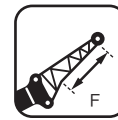
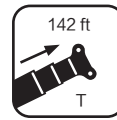
	88.9 ft	102.1 ft	102.1 ft	102.1 ft	115.4 ft	115.4 ft	115.4 ft	128.6 ft	128.7 ft	142 ft	
15	28210										15
16	27550										16
18	26890										18
20	25350										20
21	24250	13880	10360	18950							21
23	23360	13880	10360	18070	10360	8370	13880	8370	10360		23
26	21820	13880	10360	16750	10360	8370	13880	8370	10360	8370	26
30	20280	13880	10360	15650	10360	8370	13220	8370	10360	8370	30
33	18070	13880	10360	14770	10360	8370	13000	8370	10360	8370	33
36	16530	13880	10360	14100	10360	8370	12780	8370	10360	8370	36
39	14320	13880	10360	13440	10360	8370	12560	8370	10360	8370	39
43	12120	13220	10360	12560	10360	8370	11680	8370	10360	8370	43
46	10580	12120	10360	11020	10360	8370	10800	8370	10140	8150	46
49	9250	10800	10360	9700	10360	8370	9700	8370	9250	7930	49
52	8150	9470	10140	8370	9700	8370	8810	7930	8590	7490	52
59	5950	7490	8370	6610	7710	7710	6830	7710	7270	6390	59
66	4620	5950	7050	5070	6390	7050	5510	6610	5730	5950	66
72	3300	4850	5510	3960	5070	5950	4180	5290	4620	4850	72
79		3960	4850	2860	4180	5070	3300	4400	3520	3740	79
85		3080	3740	1980	3300	4180	2420	3520	2640	2860	85
92					2640	3520	1540	2860	1980	2200	92
98					1980	2640	1100	1980	1320	1540	98
105								1540	880	1100	105
112								1100		660	112
	100%	50%	0	100%	50%	0	100%	50%	100%	100%	
	33.30%	66.70%	83.30%	50%	83.30%	100%	66.70%	100%	83.30%	100%	
	33.30%	66.70%	83.30%	50%	83.30%	100%	66.70%	100%	83.30%	100%	
	33.30%	66.70%	83.30%	50%	83.30%	100%	66.70%	100%	83.30%	100%	



# JIB

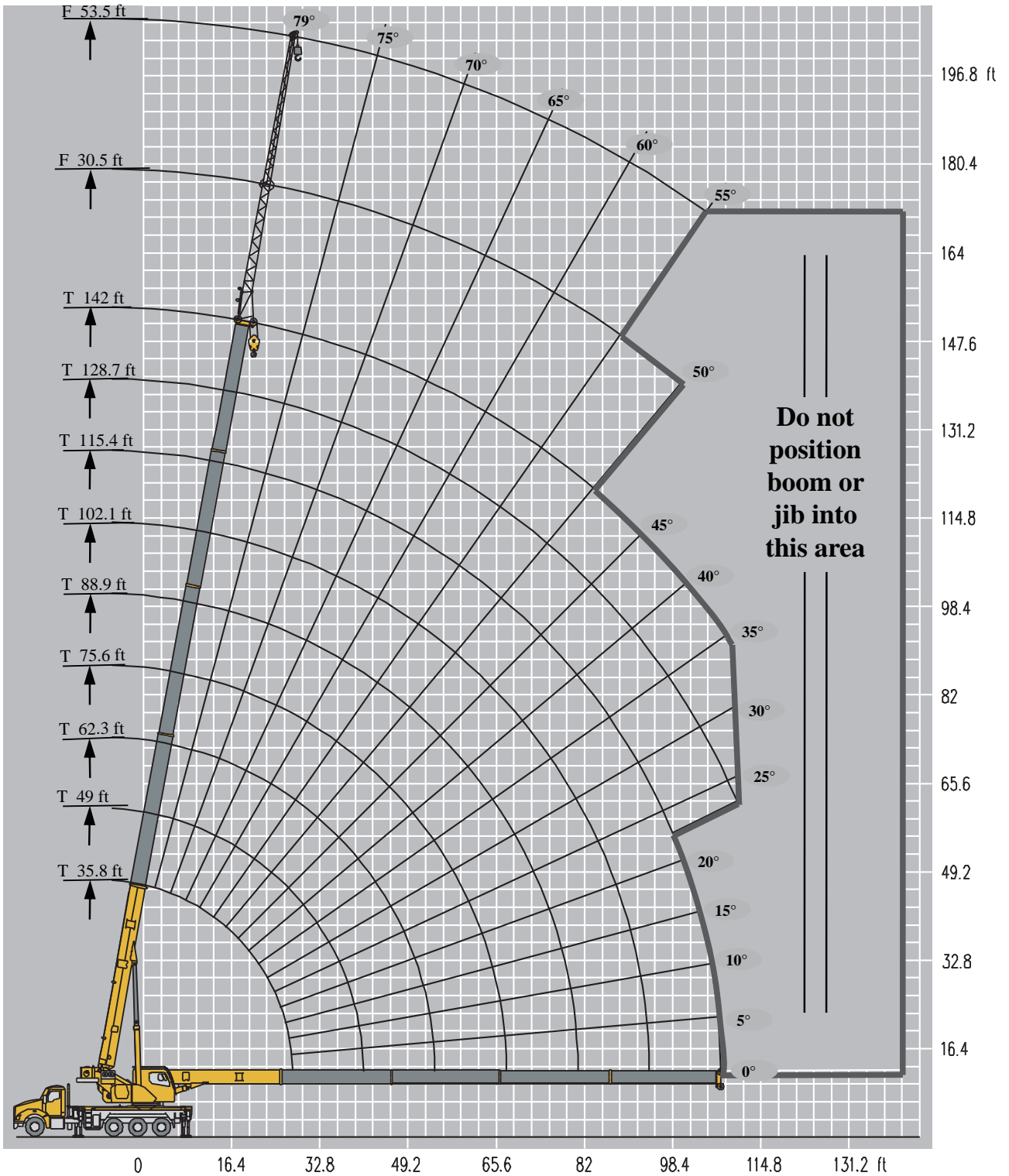


# LOAD CHARTS

## T 142 ft

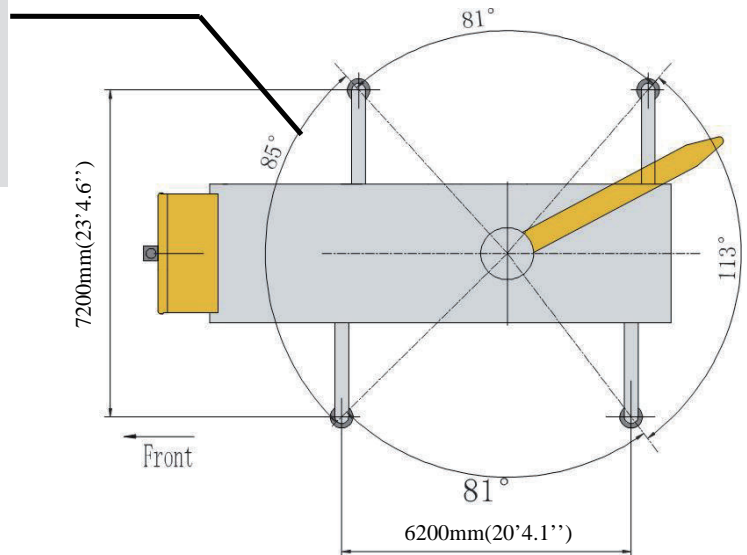


	142 ft			142 ft		
	30.5 ft			53.5 ft		
	0°	15°	30°	0°	15°	
79	3740	3300	2640	2200	1100	79
78	3520	3260	2640	1980	1050	78
75	3190	3190	2640	1870	990	75
72	3080	3080	2420	1650	880	72
70	2860	2860	2420	1540	880	70
65	2750	2640	2420	1320	770	65
60	2640	2420	2200	1100	660	60
55	1760	1540	1540	770		55
50	880					50



# WORKING AREAS

In order to take advantage of full 360° rotation, the fifth jack must be set in accordance with the manual before working in this area, and the machine must be level. If the fifth jack is lowered, the crane can only be operated with the boom over the side or over the rear of the crane.



# REEVING DIAGRAM

ALLOWABLE LINE PULL								WARNING
8 parts of line	7 parts of line	6 parts of line	5 parts of line	4 parts of line	3 parts of line	2 parts of line	1 part of line	
								Refer to the owners manual
								Incorrect reeving or incorrect input of parts of line may result in serious accidents.
								Keep at least three turns of rope left on
82,252 lb	72,683 lb	62,913 lb	52,954 lb	42,787 lb	32,412 lb	21,826 lb	11,023 lb	—