



**BOOM TRUCK**

# XCT35\_U

**Less Flex, More Lift**





# CONTENTS

Product Advantages and Highlights	01-03
Dimensions	04-05
Specifications	06
Reeving Diagram	07
Technical Specifications	08-09
Boom / Jib Combinations	10
Working Range Diagram and Load Charts	11-36
Table of Main Technical Parameters	37
Description of Symbols	38-39



## STRENGTH WHERE IT COUNTS

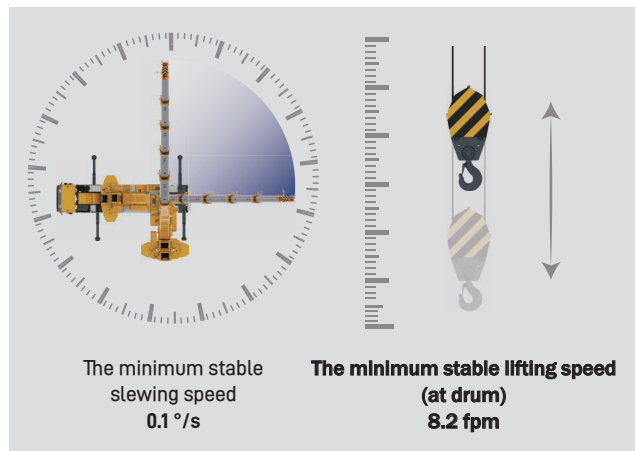
### 120 FEET OF FULL-POWER REACH

- 120 ft of reach from just four boom sections. Fewer joints, less deflection, and a stronger structure under load.
- Three outrigger span combinations provide greater operational flexibility.
- A single-cylinder wire-rope telescoping system delivers synchronized boom extension and retraction. Optional 29.8 ft jib available.



### DUAL-PUMP FLOW CONTROL | INDEPENDENT HYDRAULIC COOLING

- Fast when the job demands speed. Precise when the lift demands control. Dual-pump combined/divided flow control with active compensation technology delivers both.
- Minimum stable slewing speed of  $0.1^\circ/\text{s}$ . Winch speed as low as 8.2 fpm. Smooth, controlled performance built for precision lifting.
- A high-power independent hydraulic oil cooling system improves thermal efficiency and extends component life, keeping the machine running reliably in demanding conditions.



**RUNS ON WHATEVER YOU RUN**

- Your existing dealer network handles the truck. We handle the crane. No surprises.
- Standardize around the chassis brand your fleet already runs, and keep parts, service, and driver familiarity consistent across your operation.

**REGULATION-READY | OPERATOR-FOCUSED DESIGN**

- Spec the axle configuration that fits your state's permitting requirements from the start, so the truck is ready to work the day it arrives.
- Slewing proportional brake is added to allow adjustment of the maximum slewing speed. Wireless remote control for the winch, luffing, and outriggers is also incorporated, delivering superior intelligence, user-friendliness, and operational cost-efficiency.

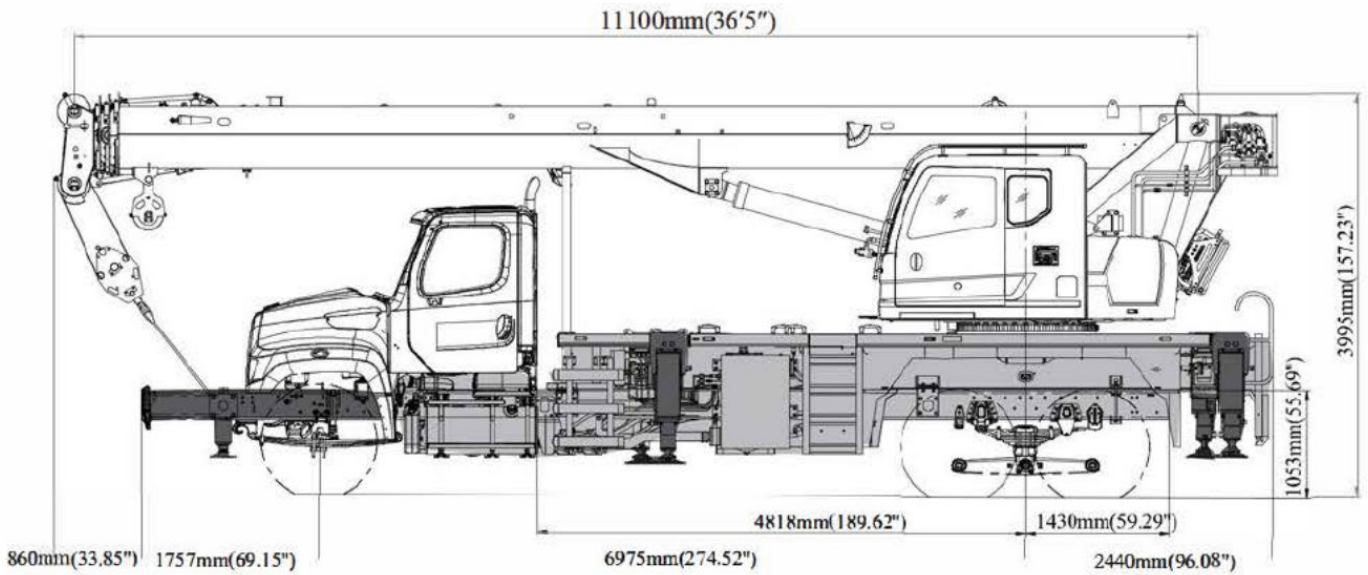




## COMFORT-DRIVEN CAB DESIGN

Redesigned driver and operator cab interiors put comfort and control where they should be, within reach. Every switch, sight line, and access point built around how operators actually work. Easier drives. Smoother operations. Faster maintenance.

Operator's Cab	0°-20° tiltable cab for wider visibility and a comfortable, purpose-built workspace.
Intuitive Touchscreen	7-inch true-color touchscreen puts key information and machine intelligence at the operator's fingertips. Easy to learn, logical to anyone who's run a crane.
Zone Control Interface	Three dedicated control zones for safety, lifting, and operating environment keep everything organized and within reach.



### CHASSIS DATA

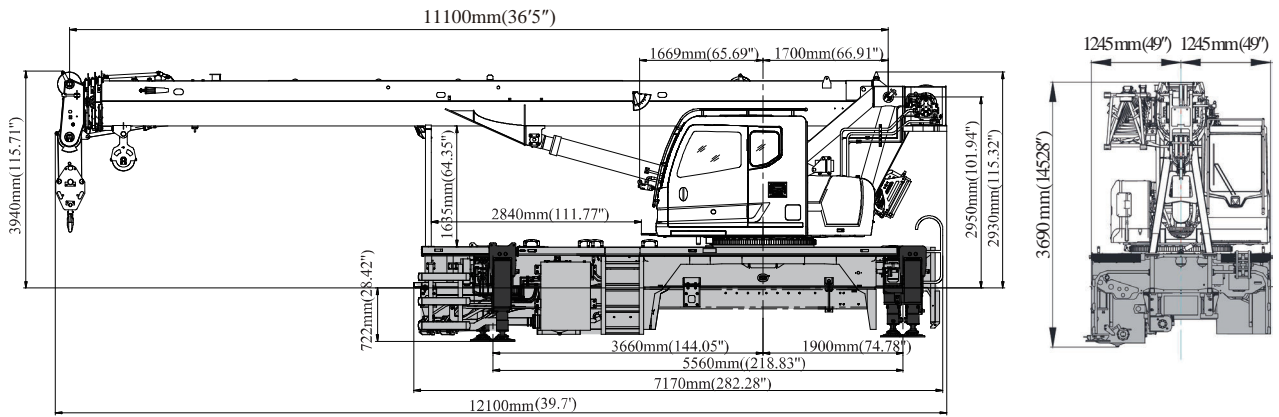
XCT35_U	WHEEL BASE	CAB TO FRONT AXLE	BUMPER TO CAB	CAB TO REAR AXLE
Dimensions	274.52"	69.15"	33.85"	189.62"

### TRUCK AXLE RATINGS AND ESTIMATED BARE CHASSIS WEIGHTS

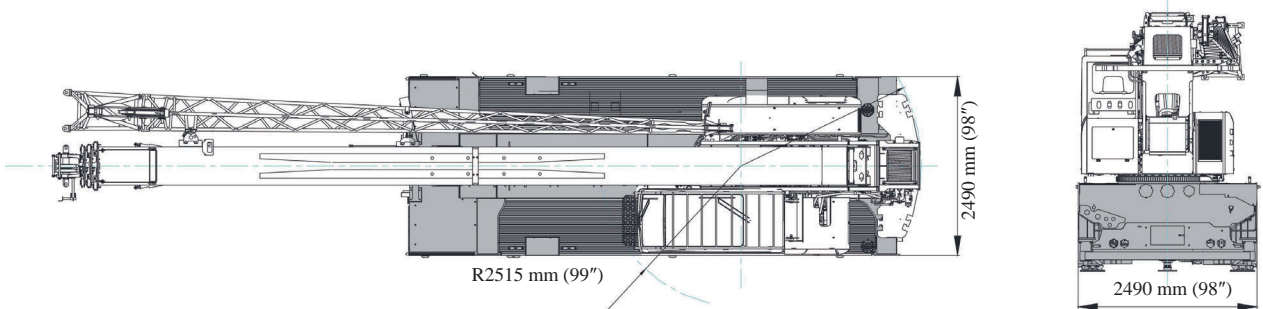
XCT35_U	FRONT AXLE RATING	REAR AXLE RATING	MIN TRUCK AXLE WEIGHT -FRONT AXLE	MIN TRUCK AXLE WEIGHT -REAR AXLE
Dimensions	18,000 lb	46,000 lb	9,150 lb	8,000 lb

Data published here is a guide only. Crane operation is subject to specific load chart and information. With different chassis, the parameters may be different.

# DIMENSIONS



Main Boom: 36 '5 " retracted;  
120' extended



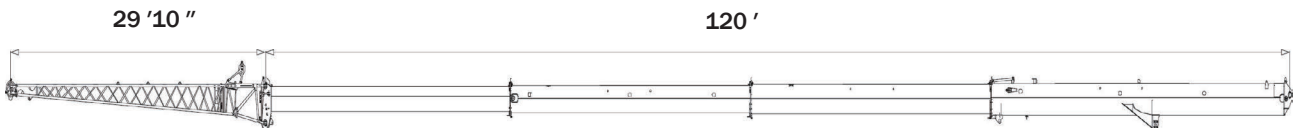
**DIMENSIONS ARE IN MM UNLESS OTHERWISE SPECIFIED**










	CRANE (STANDARD)	FIXED JIB	OPTIONAL COUNTERWEIGHT
<b>Weight</b>	34,200 lb	728 lb	3,000 lb
<b>CG</b>	60.8"	229.4"	86.6"

\*Weight includes all items with booms fully retracted.  
\* Optional counterweight is 3,000 lb, which is not included.

Equipped with a 36' 5" -120' four-section boom, and can be equipped with a 29' 10" jib.





## WORKING SPEEDS

	 Max	 F
	0-384 fpm, single line, 4th layer	8,000 lb
	0-2 rpm	
	Approximately 35s for boom luffing from -5° to 81°	
	Approximately 50s for boom extending from 36'5" to 120'	

# REEVING DIAGRAM

ALLOWABLE LINE PULL									WARNING
9 parts of line	8 parts of line	7 parts of line	6 parts of line	5 parts of line	4 parts of line	3 parts of line	2 parts of line	1 parts of line	Refer to the manual
70,000 lb	64,000 lb	56,000 lb	48,000 lb	40,000 lb	32,000 lb	24,000 lb	16,000 lb	8,000 lb	—

			WARNING
Rope	5/8 in	5/8 in/410 ft	Keep at least 3 wraps of rope on drum at all times



HOOK	NO. OF SHEAVES	PARTS OF LINE	WEIGHT	REMARKS
40 USt	4	8	794 lb	Single hook (Optional)
27.5 USt	3	6	440 lb	Single hook (Optional)
15 USt	1	3	270 lb	Single hook (Optional)
5.0 USt	—	1	145 lb	Single hook (Standard)

	<b>INTERMEDIATE FRAME</b>
<b>Frame</b>	Designed by XCMG, with all covered deck, made of high strength steel with rectangular cross section.
<b>Outriggers</b>	H-type, outrigger beams and jacks with the 5th jack at front bumper. Outrigger control via standard wireless remote control and backup manual valve. Outrigger pads are stored under outriggers. Level indicators are provided on each side and at rear of crane. Fully-extended: 18.2'×20' Half-extended: 18.2'×14.8'
<b>Hydraulic System</b>	The hydraulic system of outriggers is a constant displacement open-circuit system. The hydraulic pump is connected to the transmission through PTO. Maximum volume of hydraulic oil tank: 63.4 gal

	<b>SUPERSTRUCTURE</b>
<b>Frame</b>	Designed and manufactured by XCMG, made of high-strength steel.
<b>Hydraulic System</b>	Variable displacement pump is used for lifting, luffing, and telescoping; the gear pump is used for slewing; load-sensing proportional multi-way directional control valve controlled by pilot hydraulic oil is adopted; fitted with standard hydraulic oil cooler to control oil temperature in the most demanding applications.
<b>Control System</b>	Hydraulic pilot control lever. Standard LMI display includes crane set up, lifting parameters, load charts, lifting planning, virtual instruments, and fault diagnosis.
<b>Main Winch System</b>	Hydraulic control is used for speed regulation. The system is driven by a hydraulic motor through a planetary gear reducer, with a normally closed brake, a counterbalance valve and a grooved drum equipped.
<b>Cab</b>	New fully-enclosed steel tiltable cab with a full-view front window. Safety glass and sun screen are used for windows. Wipers are fitted for the windshield and roof window. Standard controls and indicators are ergonomically arranged in the cab. The cab features a new ergonomic seat design with backrest adjustment and armrests with levers fitted. A sliding door and a pull-out step make for easy and safe access to the cab.
<b>Slewing System</b>	Hydraulic control is used for speed regulation. The system is driven by a hydraulic motor through a planetary gear reducer, with a normally closed brake.
<b>Operational Aids</b>	Hydraulic counterbalance valve, hydraulic relief valve, double-way hydraulic valve, and LMI. Lowering limiter for preventing wire rope from over-releasing. Anti-two block at boom head for preventing wire rope from over-winding.
<b>LMI</b>	The LMI is installed in the control box with its display mounted in the operator's cab. When the actual moment approaches the overload value, it sends a visual alarm and automatically stops dangerous movements before overloading. Overload memory function (black box) and fault self-diagnosis function are available.
<b>Counterweight</b>	Total weight is 1,000 lb, fixed counterweight. Extra 3,000 lb counterweight is optional.
<b>Hook Blocks</b>	4.5 t (5.0 USt)

# TECHNICAL SPECIFICATIONS

	<b>BOOM SYSTEM</b>
<b>Boom</b>	4-section, U-shape cross section structure. Fully synchronous with single cylinder and wire rope extension system. Boom length: 36' 5"-120', Boom angle: -5° ~81°

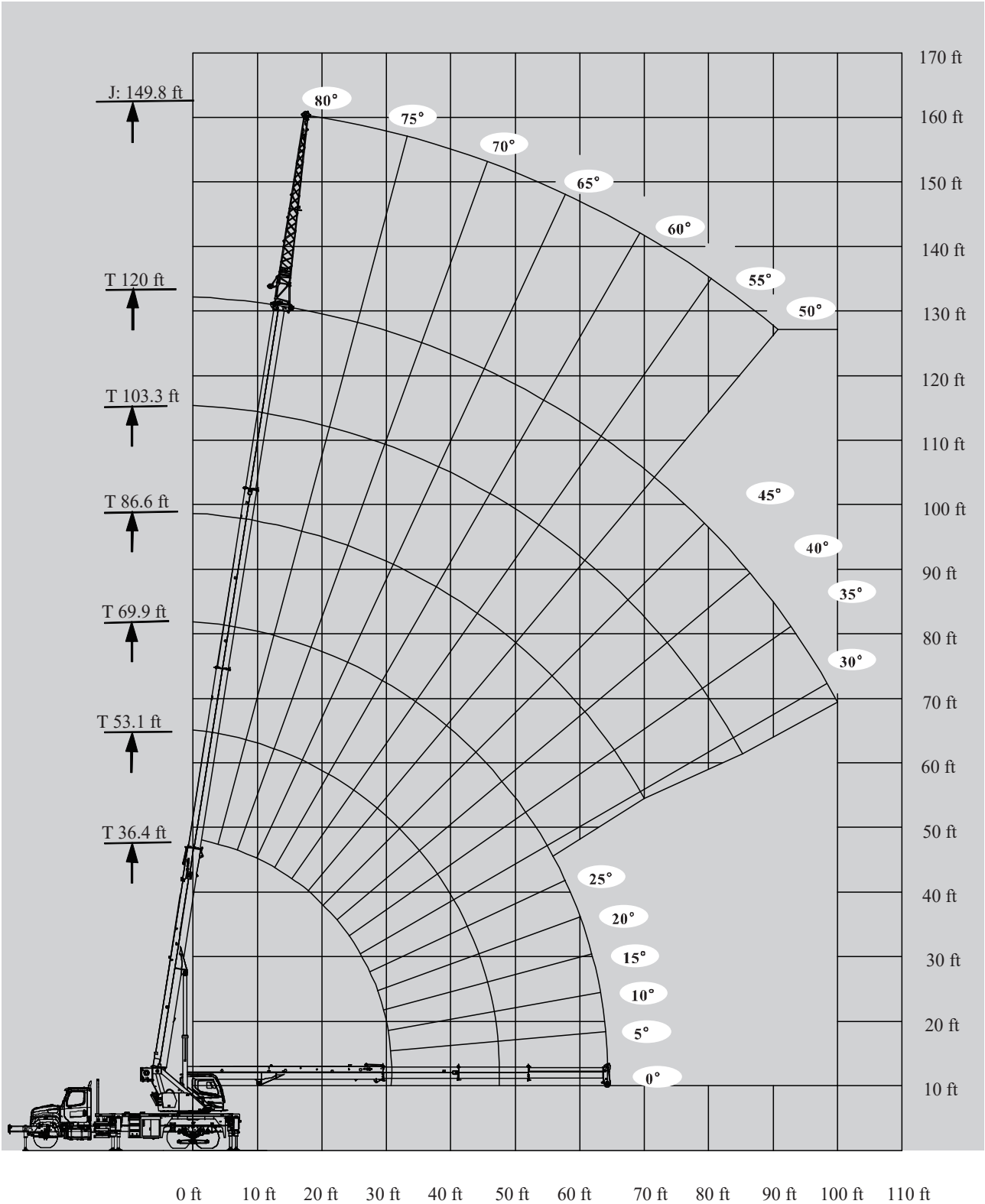
	<b>OPTIONAL EQUIPMENT</b>
<b>Fixed jib</b>	The jib consists of a connecting bracket, an offsetting bracket and single lattice section. Three offset angles of 0°, 15° and 30° are available. Jib length: 29' 10"
<b>Control system</b>	Main winch and boom elevation wireless remote control.
<b>Slewing lock</b>	360° physical slewing lock.
<b>Slewing mode</b>	Slewing proportional brake.
<b>Hook blocks</b>	40 USt, 27.5 USt, 15 USt
<b>Camera</b>	Camera is on main boom head, and screen is available in operator's cab.
<b>Counterweight</b>	3,000 lb optional counterweight
<b>Vibration lever</b>	It provides operation reminder and real-time vibration.

Please refer to the product quotation for specific parts.

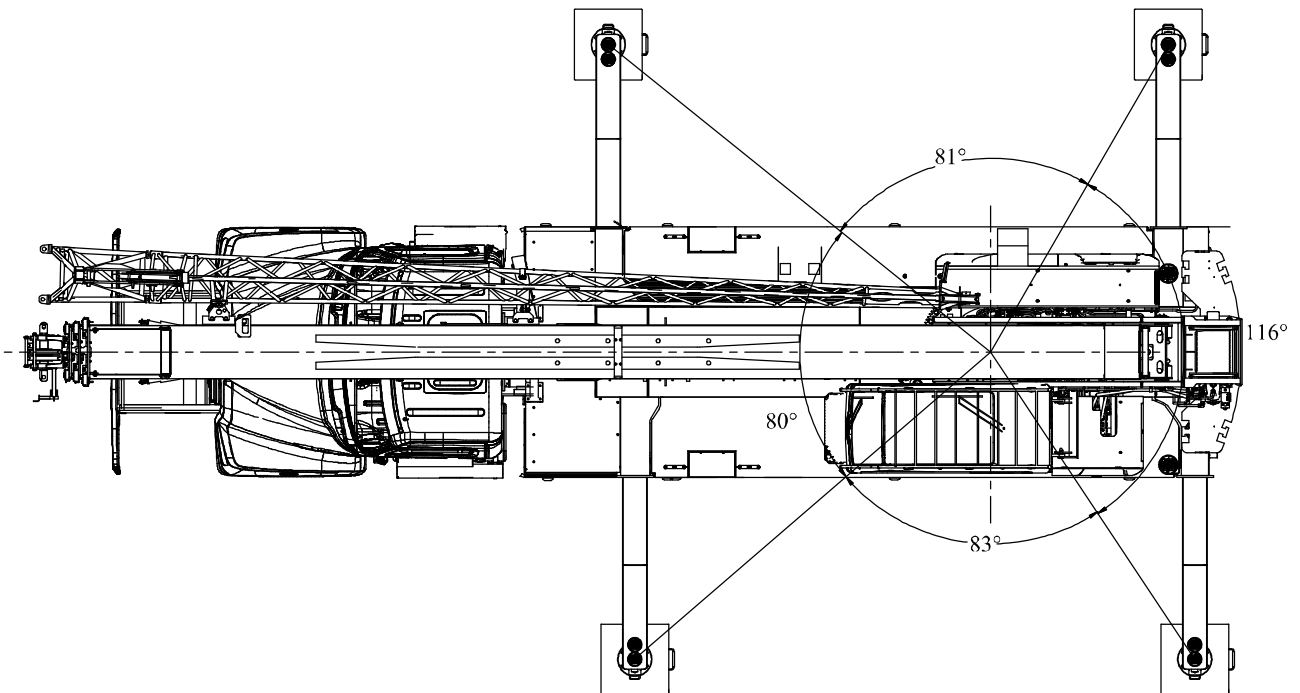
BOOM	BOOM + SINGLE SECTION JIB
T: 36' 5"-120'	T: 120' J: 29' 10"



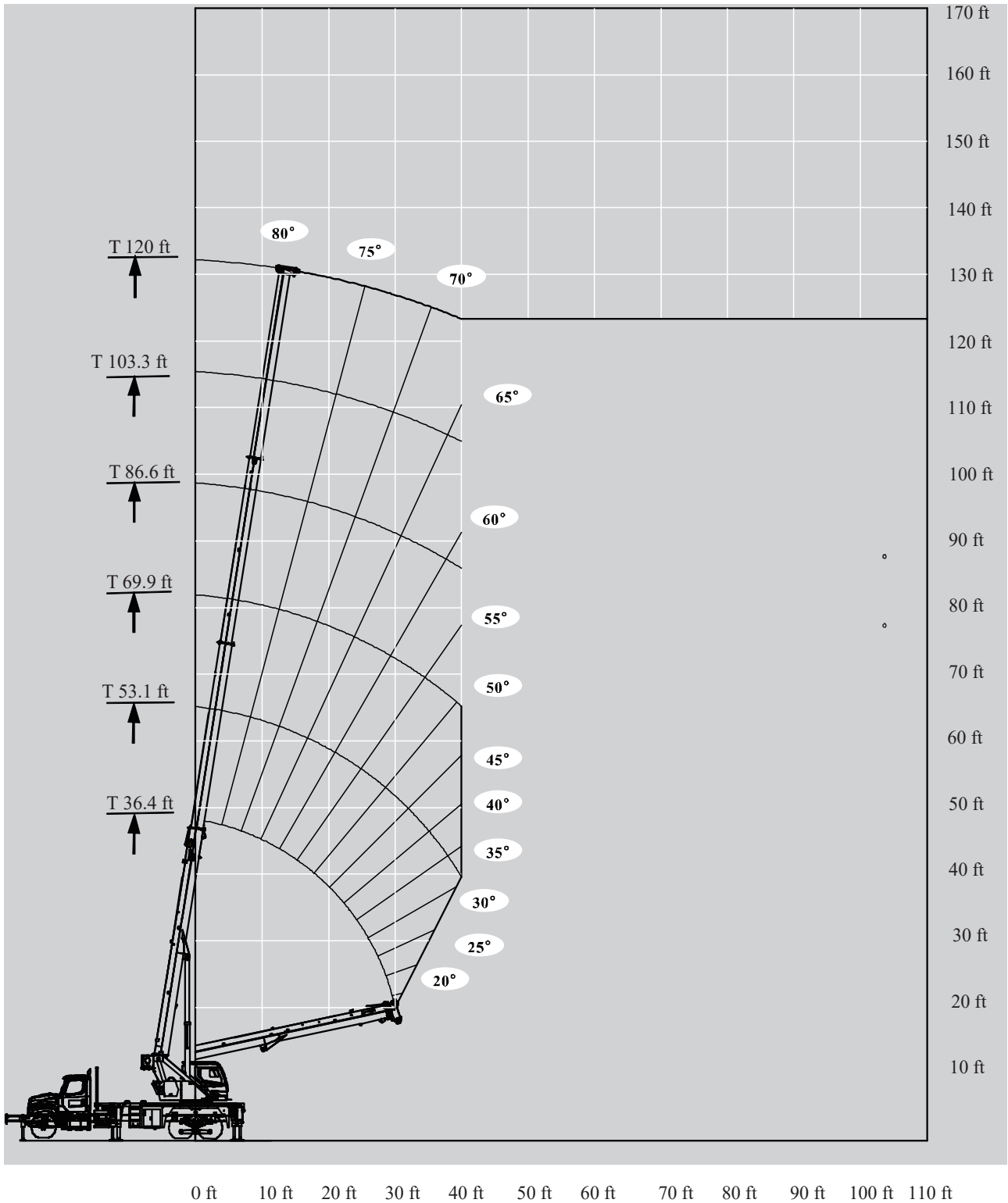
# WORKING RANGE DIAGRAM



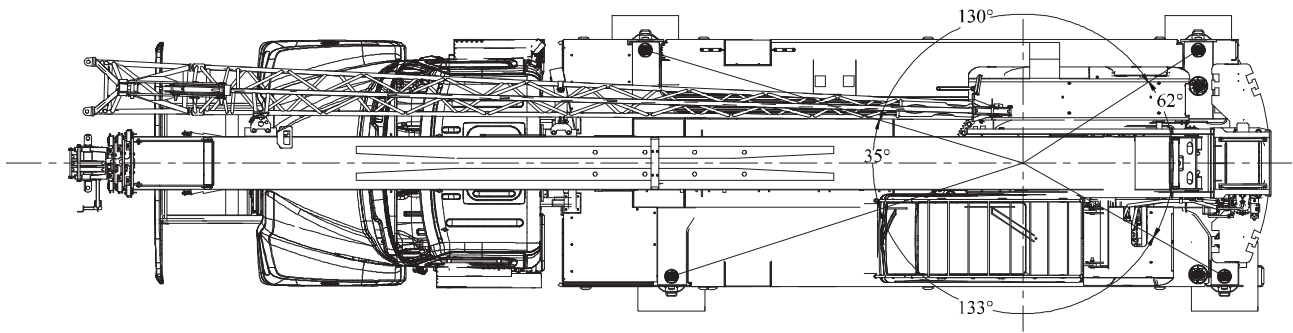
THIS CHART ONLY WHEN ALL OUTRIGGERS ARE FULLY- EXTENDED

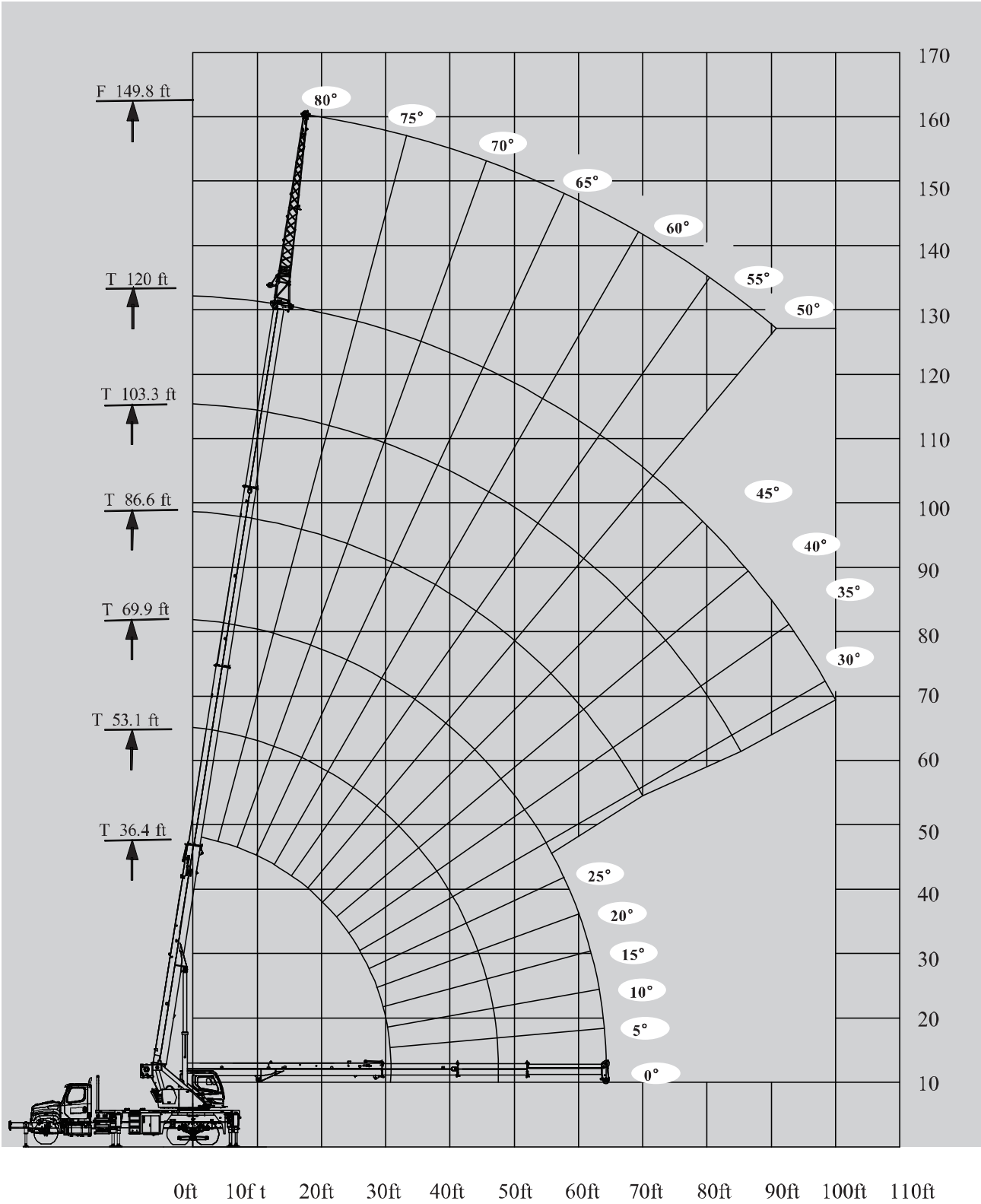


# WORKING RANGE DIAGRAM



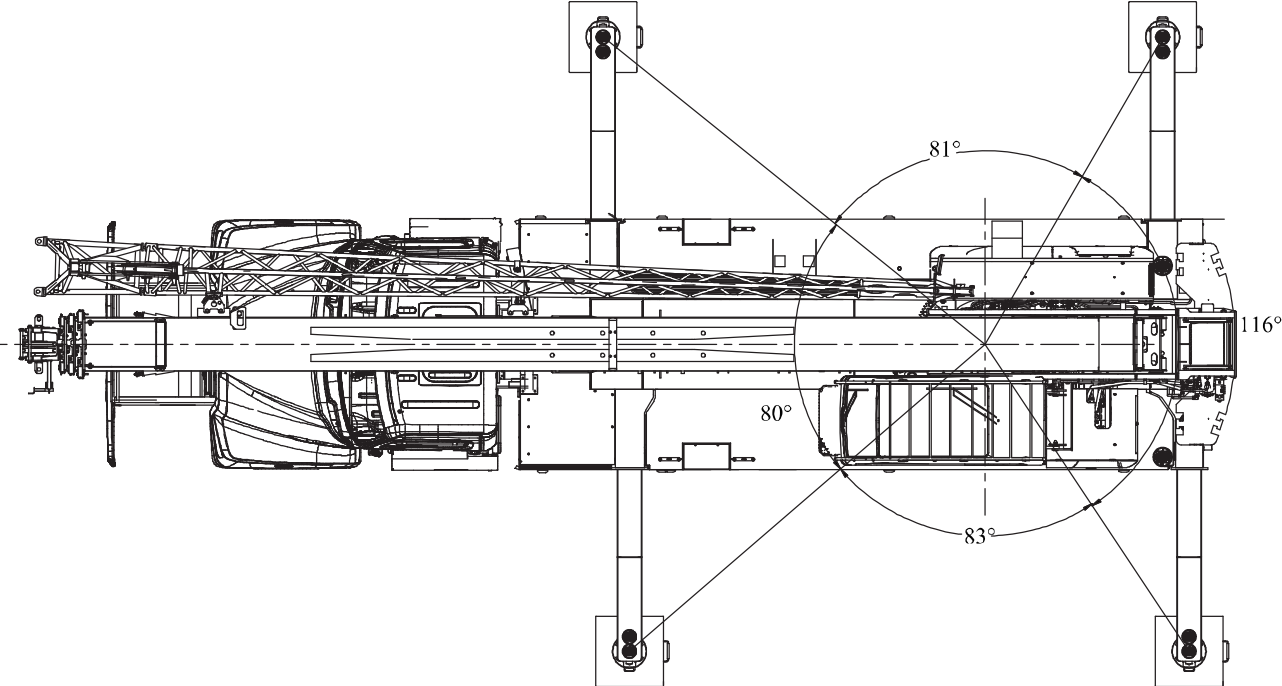
THIS CHART ONLY WHEN ALL OUTRIGGERS ARE FULLY-RETRACTED





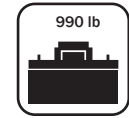
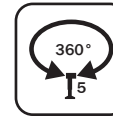
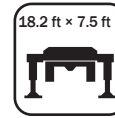
# WORKING AREAS



THIS CHART ONLY WHEN ALL OUTRIGGERS ARE FULLY- EXTENDED



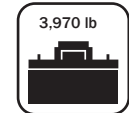
# LOAD CHARTS



## T 36-120 ft



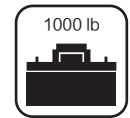
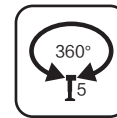
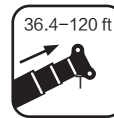
	36.4 ft	53.1 ft	69.9 ft	86.6 ft	103.3 ft	120.1 ft	
5.9 ft	70,000						5.9 ft
7.9 ft	29,570						7.9 ft
9.8 ft	18,100	18,980					9.8 ft
12.1 ft	12,590	13,250					12.1 ft
15.1 ft	9,060	9,700	9,700	10,360			15.1 ft
20.0 ft	5,070	5,730	5,950	6,170	6,170		20.0 ft
24.9 ft	3,090	3,530	3,750	3,970	3,970	4,190	24.9 ft
29.9 ft	1,540	2,200	2,430	2,430	2,650	2,650	29.9 ft
35.1 ft		1,320	1,540	1,540	1,760	1,760	35.1 ft
Deductions for stowed fixed jib	530	370	290	220	200	150	Deductions for stowed fixed jib



## T 36-120 ft



	36.4 ft	53.1 ft	69.9 ft	86.6 ft	103.3 ft	120.1 ft	
5.9 ft	70,000						5.9 ft
7.9 ft	33,970						7.9 ft
9.8 ft	21,190	22,000					9.8 ft
12.1 ft	14,770	15,450					12.1 ft
15.1 ft	11,020	11,680	11,930	12,150			15.1 ft
20.0 ft	6,390	7,050	7,280	7,500	7,500		20.0 ft
24.9 ft	3,970	4,410	4,850	4,850	5,070	5,070	24.9 ft
29.9 ft	2,430	2,870	3,310	3,310	3,530	3,090	29.9 ft
35.1 ft		1,980	2,200	2,200	2,430	2,430	35.1 ft
40.0 ft		1,100	1,320	1,540	1,540	1,540	40.0 ft
Deductions for stowed fixed jib	530	370	290	220	200	150	Deductions for stowed fixed jib

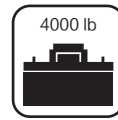
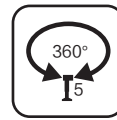
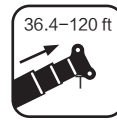
**T 36.4~120 ft**





	36.4 ft	53.1 ft	69.9 ft	86.6 ft	103.3 ft	120.0 ft	
6.0	70000						6.0
8.0	55160						8.0
10.0	41260	28910					10.0
12.0	38610	28910					12.0
15.0	30890	28910	26700	18260			15.0
20.0	24710	25380	22730	16770	12760		20.0
25.0	19200	19860	19860	14780	11690	8030	25.0
30.0	14120	14780	15230	12070	9490	8030	30.0
35.0		11470	11920	10890	8830	7720	35.0
40.0		8830	9270	9240	7500	6400	40.0
45.0		7060	7280	7500	6620	6400	45.0
50.0			5960	6180	5960	5080	50.0
55.0			4850	5080	5080	4630	55.0
60.0				4190	4190	3740	60.0
65.0				3310	3530	3400	65.0
70.0				2870	2870	2700	70.0
75.0					2430	2430	75.0
80.0					1990	1990	80.0
85.0					1540	1540	85.0
90.0						1320	90.0
95.0						880	95.0
100.0						660	100.0
Deductions for stowed fixed jib	540	370	280	230	190	160	Deductions for stowed fixed jib

# LOAD CHARTS



## T 36.4~120 ft

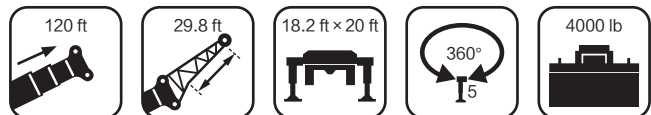




	36.4 ft	53.1 ft	69.9 ft	86.6 ft	103.3 ft	120.0 ft	
6.0	70000						6.0
8.0	55160						8.0
10.0	41260	28910					10.0
12.0	38610	28910					12.0
15.0	30890	28910	26700	18260			15.0
20.0	24710	25380	22730	16770	12760		20.0
25.0	20520	20960	19860	14780	11690	8030	25.0
30.0	15230	15890	16110	12070	9490	8030	30.0
35.0		12360	12580	10890	8830	7720	35.0
40.0		9930	10150	9240	7500	6400	40.0
45.0		7940	8380	7960	6620	6400	45.0
50.0			6840	7060	5960	5080	50.0
55.0			5520	5740	5080	4630	55.0
60.0				4850	4740	3740	60.0
65.0				3970	4050	3400	65.0
70.0				3310	3360	2700	70.0
75.0					2870	2650	75.0
80.0					2430	2340	80.0
85.0					1990	1970	85.0
90.0						1540	90.0
95.0						1320	95.0
100.0						1100	100.0
Deductions for stowed fixed jib	540	370	280	230	190	160	Deductions for stowed fixed jib

### T 120ft

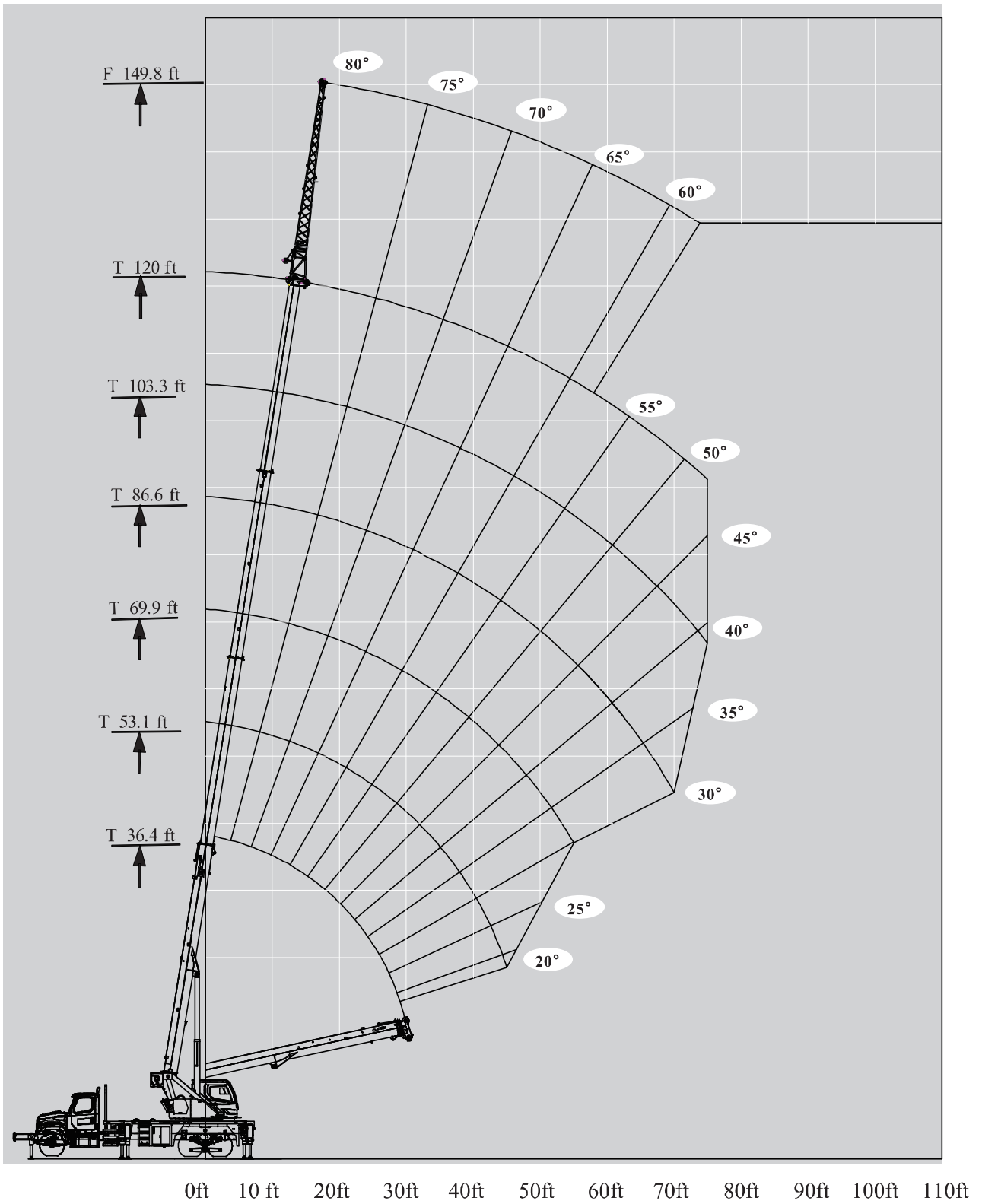


	120 ft			
	29.8 ft			
	0°	15°	30°	
80	3310	2870	2540	80
78	3090	2870	2430	78
76	3090	2870	2320	76
74	2980	2760	2100	74
72	2980	2760	1990	72
70	2980	2760	1880	70
68	2870	2650	1880	68
66	2870	2540	1880	66
64	2760	2320	1770	64
62	2430	1990	1650	62
60	2210	1770	1650	60
58	1770	1540	1320	58
56	1540	1320	1320	56
54	1320	1100	1100	54
52	1100	880	880	52
50	880			50

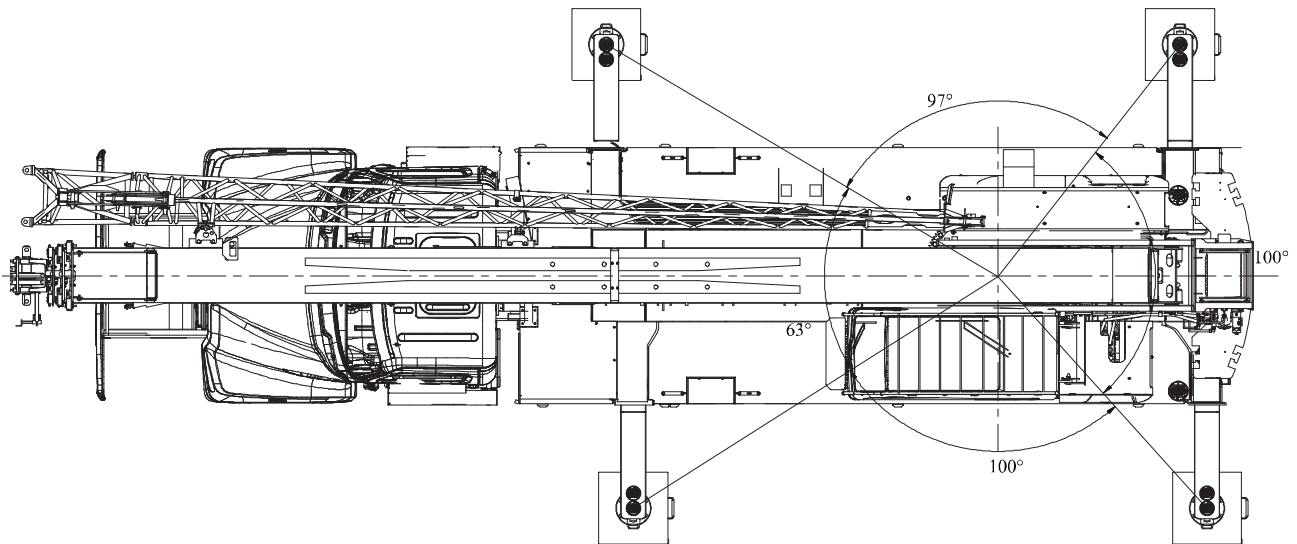


	120 ft			
	29.8 ft			
	0°	15°	30°	
80	3310	2870	2540	80
78	3090	2870	2430	78
76	3090	2870	2320	76
74	2980	2760	2100	74
72	2980	2760	1990	72
70	2980	2760	1880	70
68	2870	2650	1880	68
66	2870	2540	1880	66
64	2760	2320	1770	64
62	2540	1990	1650	62
60	2320	1770	1650	60
58	1990	1540	1320	58
56	1650	1430	1320	56
54	1430	1320	1210	54
52	1320	1210	990	52
50	1210			50

# WORKING RANGE DIAGRAM

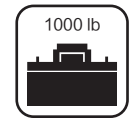
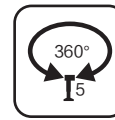
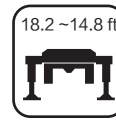
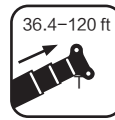




THIS CHART ONLY WHEN ALL OUTRIGGERS ARE IN HALF-EXTENDED POSITION



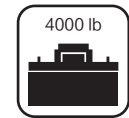
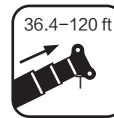
# LOAD CHARTS



## T 36.4~120ft



	36.4 ft	53.1 ft	69.9 ft	86.6 ft	103.3 ft	120.0 ft	
6.0	70000						6.0
8.0	55160						8.0
10.0	41260	28910					10.0
12.0	38610	28910					12.0
15.0	30890	28910	26700	18260			15.0
20.0	17430	18090	18530	16770	12760		20.0
25.0	11250	11920	12360	12360	11690	8030	25.0
30.0	7720	8380	8830	8830	9050	8030	30.0
35.0		6180	6400	6620	6840	6840	35.0
40.0		4630	4850	5080	5300	5300	40.0
45.0		3530	3750	3970	3970	4190	45.0
50.0			2870	3090	3090	3310	50.0
55.0			2210	2430	2430	2650	55.0
60.0				1770	1990	1990	60.0
65.0				1320	1320	1540	65.0
70.0					1100	1100	70.0
Deductions for stowed fixed jib	540	370	280	230	190	160	Deductions for stowed fixed jib

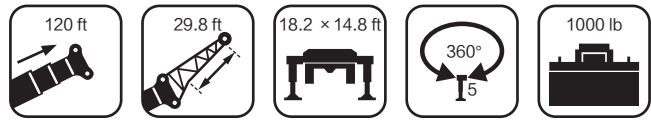
**T 36.4~120ft**





	36.4 ft	53.1 ft	69.9 ft	86.6 ft	103.3 ft	120.0 ft	
6.0	70000						6.0
8.0	55160						8.0
10.0	41260	28910					10.0
12.0	38610	28910					12.0
15.0	30890	28910	26700	18260			15.0
20.0	19860	20520	20960	16770	12760		20.0
25.0	13020	13680	13900	14120	11690	8030	25.0
30.0	9270	9710	10150	10370	9490	8030	30.0
35.0		7280	7720	7720	7940	7720	35.0
40.0		5520	5960	5960	6180	6180	40.0
45.0		4410	4630	4850	4850	4850	45.0
50.0			3750	3750	3970	3970	50.0
55.0			2870	3090	3090	3090	55.0
60.0				2430	2430	2650	60.0
65.0				1770	1990	1990	65.0
70.0				1320	1540	1540	70.0
75.0					1100	1320	75.0
Deductions for stowed fixed jib	540	370	280	230	190	160	Deductions for stowed fixed jib



# LOAD CHARTS

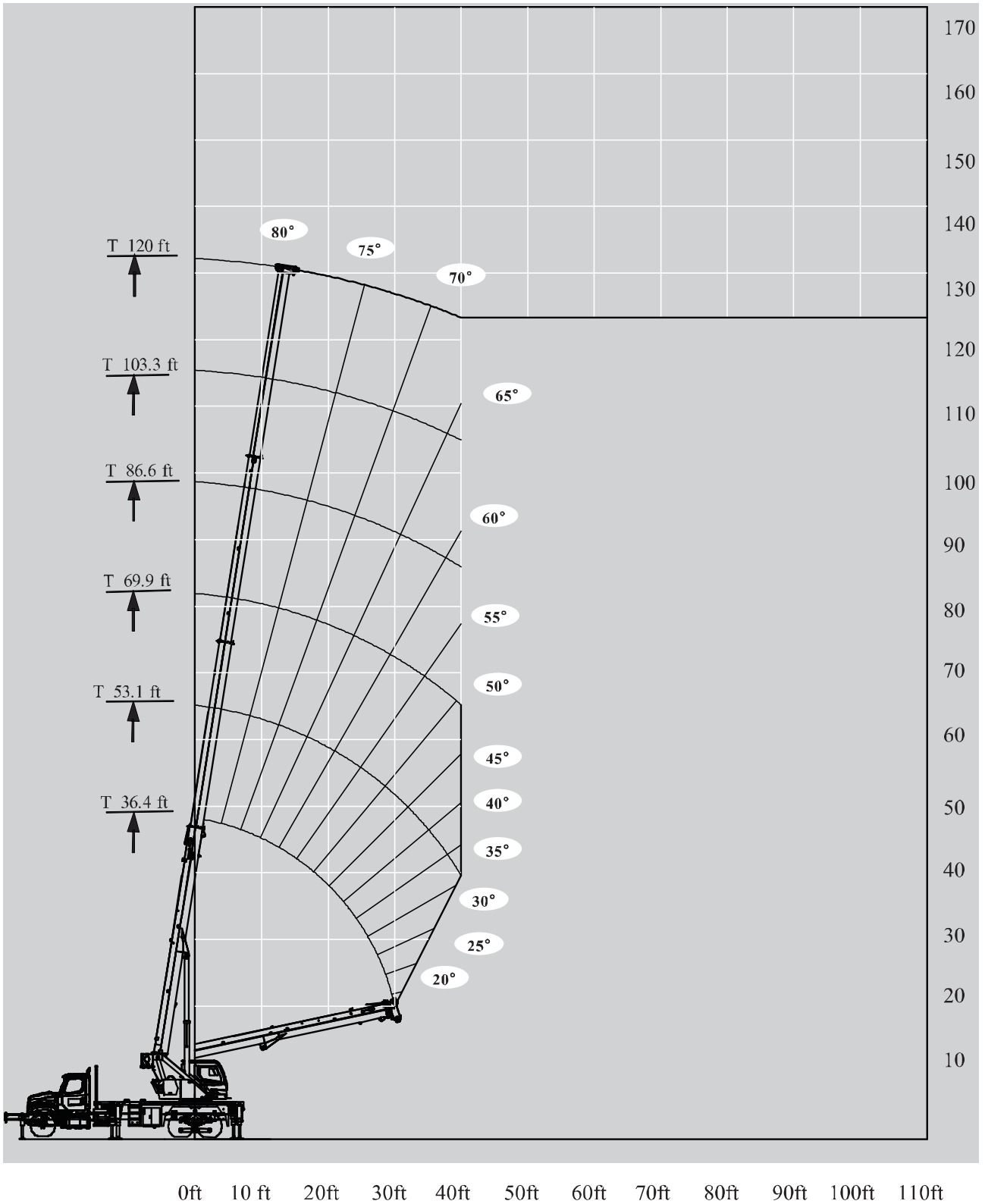
## T 120ft



	120 ft			
	29.8 ft			
	0°	15°	30°	
80	3310	2870	2540	80
78	3090	2870	2430	78
76	3090	2870	2320	76
74	2980	2760	2100	74
72	2980	2760	1990	72
70	2650	2430	1880	70
68	2210	1990	1770	68
66	1770	1540	1320	66
64	1320	1100	1100	64
62	1100	880	880	62
60	660			60

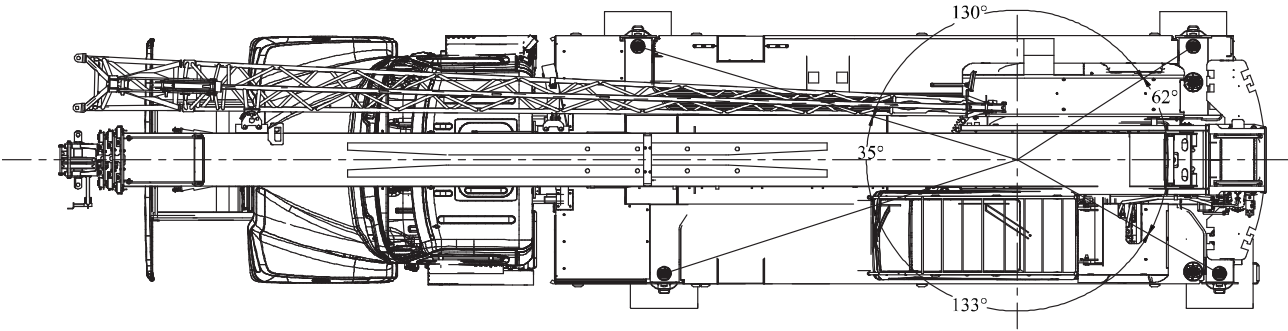


	120 ft			
	29.8 ft			
	0°	15°	30°	
80	3310	2870	2540	80
78	3090	2870	2430	78
76	3090	2870	2320	76
74	2980	2760	2100	74
72	2980	2760	1990	72
70	2980	2760	1880	70
68	2650	2430	1880	68
66	2210	1990	1770	66
64	1770	1540	1540	64
62	1540	1320	1100	62
60	1100	1100	880	60
58	880			58

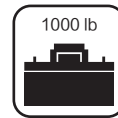
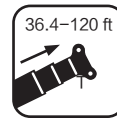




# WORKING AREAS

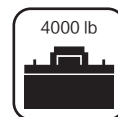
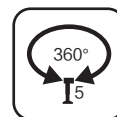
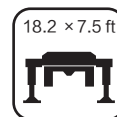
THIS CHART ONLY WHEN ALL OUTRIGGERS ARE FULLY-RETRACTED





### T 36.4~120ft



	36.4 ft	53.1 ft	69.9 ft	86.6 ft	103.3 ft	120.0 ft	
6.0	70000						6.0
8.0	29570						8.0
10.0	18090	18980					10.0
12.0	12580	13240					12.0
15.0	9050	9710	10150	10370			15.0
20.0	5080	5740	5960	6180	6180		20.0
25.0	3090	3530	3750	3970	3970	4190	25.0
30.0	1540	2210	2430	2430	2650	2650	30.0
35.0		1320	1540	1540	1770	1770	35.0
Deductions for stowed fixed jib	540	370	280	230	190	160	Deductions for stowed fixed jib








	36.4 ft	53.1 ft	69.9 ft	86.6 ft	103.3 ft	120.0 ft	
6.0	70000						6.0
8.0	34420						8.0
10.0	21180	22000□					10.0
12.0	14780	15450					12.0
15.0	11030	11690	11920	12140			15.0
20.0	6400	7060	7280	7500	7500		20.0
25.0	3970	4410	4850	4850	5080	5080	25.0
30.0	2430	2870	3310	3310	3530	3530	30.0
35.0		1990	2210	2210	2430	2430	35.0
40.0		1100	1320	1540	1540	1540	40.0
Deductions for stowed fixed jib	540	370	280	230	190	160	Deductions for stowed fixed jib

# TABLE OF MAIN TECHNICAL PARAMETERS

CATEGORY	ITEM		UNIT	PARAMETER	
Main Performance	Maximum rated lifting capacity		USt	35	
	Minimum rated radius		ft	6	
	Slewing radius at turntable tail		ft	8.25	
	Maximum load moment	Base boom	(lb-ft)	513000	
		Fully-extended boom	lb-ft	288000	
		Fully-extended boom + jib	lb-ft	184644	
	Outrigger span (fully-extended)	Longitudinal	ft	18.2	
		Lateral	ft	20	
	Lifting height	Base boom	ft	37	
		Fully-extended boom	ft	120	
		Fully-extended boom + jib	ft	143	
	Boom length	Base boom	ft	36.4	
		Fully-extended boom	ft	120	
Fully-extended boom + jib		ft	149.8		
Jib offset angle		°	0, 15, 30		
Working Speeds	Boom raising time		s	35	
	Boom fully extending time		s	50	
	Maximum slewing speed		rpm	2	
	Time for extending and retracting outriggers	Outrigger beams	Extending	s	≤25
			Retracting	s	≤22
		Outrigger jacks	Extending	s	≤35
			Retracting	s	≤30
	Lifting speed (single line, 4th layer, no load)	Main winch system	fpm	384	

	Superstructure		Boom
	Rated Lifting Load		Boom Length
	Counterweight		Working Radius
	Slewing Radius of Variable-position Counterweight		Lifting Height with Boom
	Hook Block		Boom Angle
	Parts of Line		Extension
	Boom Length Combination		Independent Jib Head
	Wind Speed		Simple Jib Head
	Configuration		Fixed Jib
	Optional Equipment		Fixed Jib Length
	Wire Rope Length		Fixed Jib Offset Angle
	Wire Rope Diameter		Luffing Jib

# DESCRIPTION OF SYMBOLS

	Maximum Single Line Pull		Maximum Lifting Height
	Maximum Working Speed		Maximum Working Radius
	Main Winch		Super Lift
	Auxiliary Winch		Wind Power Jib
	Chassis		Telescoping
	Outrigger Span		Slewing
	Tires		360° Slewing
	Axle Load		360° Slewing with the 5th Jack Down
	Gradeability		Side and Rear Operation
	Travel Speed		Operation Over Front
	Luffing		Operation Over Rear
	EN 13000 standard		Luffing Jib Winch

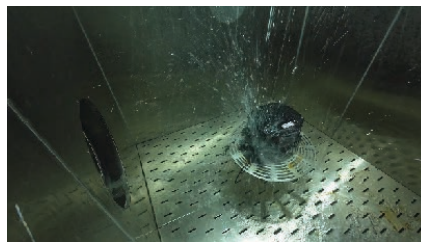
### TESTED AT EVERY LEVEL

- Each new technology and component is required to meet the most stringent design and quality protocols.
- Each complete machine undergoes rigorous run in and testing, components are subject to ongoing testing.

### OVER 2,000 COMPONENTS, 123 MANUFACTURES UNDERGOING LIFE CYCLE TESTING



HMI Display: Low-Temperature Performance Test Under -40 C



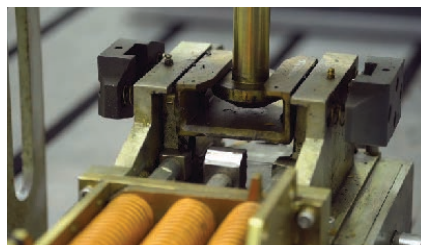
Length Measurement Sensor: 48-Hour Rain Test



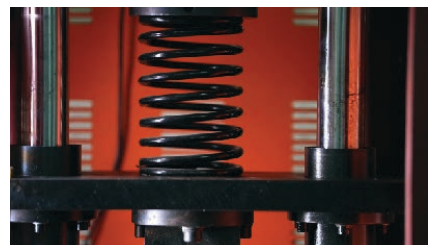
Panel Buttons: Cycled 12 Million Times



Hydraulic Pump: Low-Temperature Performance Test Under -40 C



Telescoping Mechanism: Smoothness Test



Telescoping Mechanism: Smoothness Test

### 178 POST PRODUCTION FULL-SCALE TESTS ON THE COMPLETE MACHINE



Dynamic & Static Lifting



Terrain Testing



Climbing & Hill Holding

# NOTES FOR LIFTING

- ⓘ The total rated loads shown in the load charts reflect maximum lifting capacity when the crane is set up on firm, level ground with the tires clear of the ground. The weight of the hook block, rigging, and rope between the boom tip and block must be deducted, along with any optional equipment such as the auxiliary sheave and jib.
- ⓘ The working radius shown in the load charts is measured at the point when the load is lifted off the ground, and reflects the actual value including loaded boom deflection. The operator must account for boom deflection before beginning any lift. Lifting operations are only permitted when wind speed is below 46.2 ft/s and wind pressure is below 2.59 lb/ft<sup>2</sup>.
- ⓘ Before beginning a lift, the operator must know the weight of the load and the crane's working range, then select the appropriate working conditions. Never operate the crane beyond the limits shown in the chart. When the boom length or working radius falls between listed values, use the lower of the two. Always observe boom angle limits. Never exceed the recommended boom angle, even without a load, as doing so risks overturn.
- ⓘ The boom must be extended according to the telescoping codes shown on the load charts.



Address: 305A Equipment Ct NE

Lawrenceville, GA 30046

Email: [cranes@xcmgusa.com](mailto:cranes@xcmgusa.com)

Website: [xcmg-usa.com/products/cranes-and-hoisting](http://xcmg-usa.com/products/cranes-and-hoisting)

## Do not copy without authorization!

This document is non-contractual. Constant improvement and engineering progress make it necessary that we reserve the right to make product model, specification and configuration changes without notice. Illustrations shown may include optional equipment and accessories and may not include all standard equipment. Some parts need to be purchased separately. Conform to the local laws for license application and road traveling.



XCMG  
North America