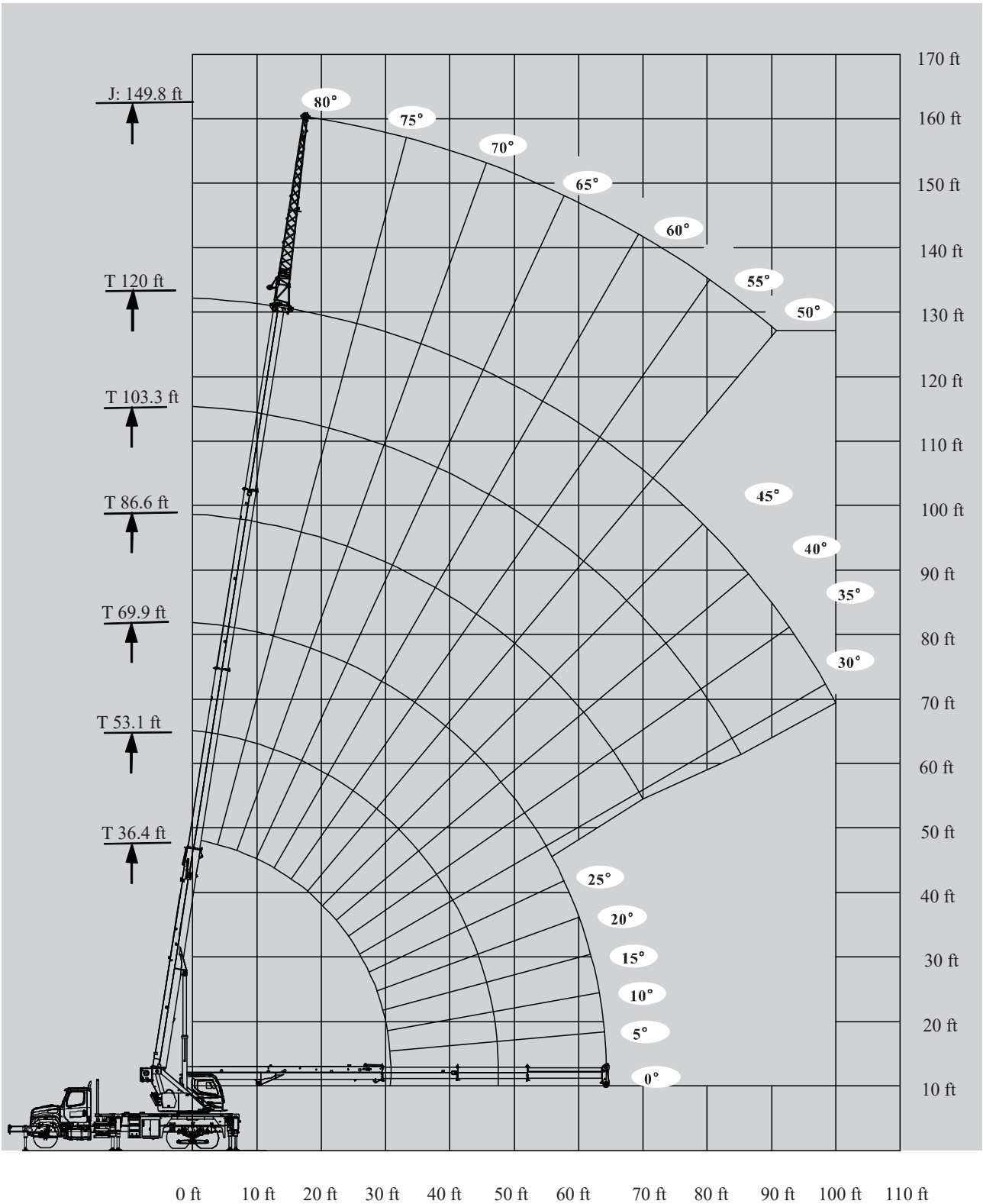


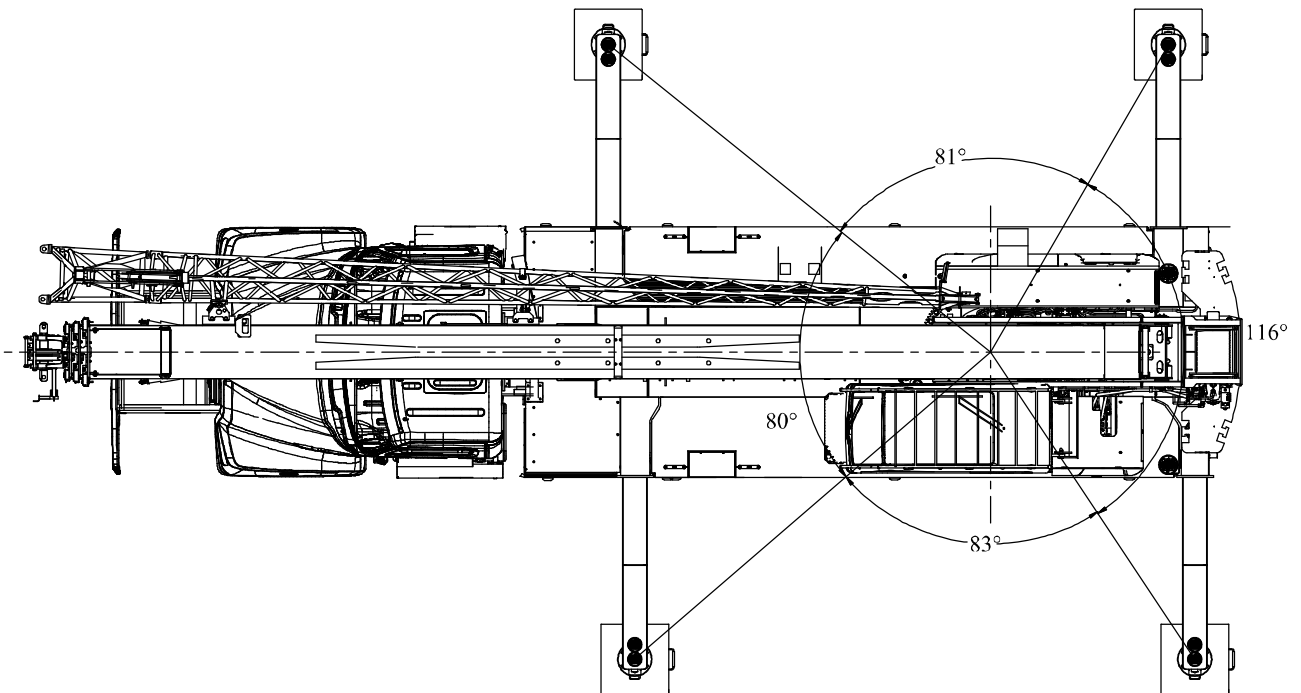
BOOM	BOOM + SINGLE SECTION JIB
T: 36' 5"-120'	T: 120' J: 29' 10"



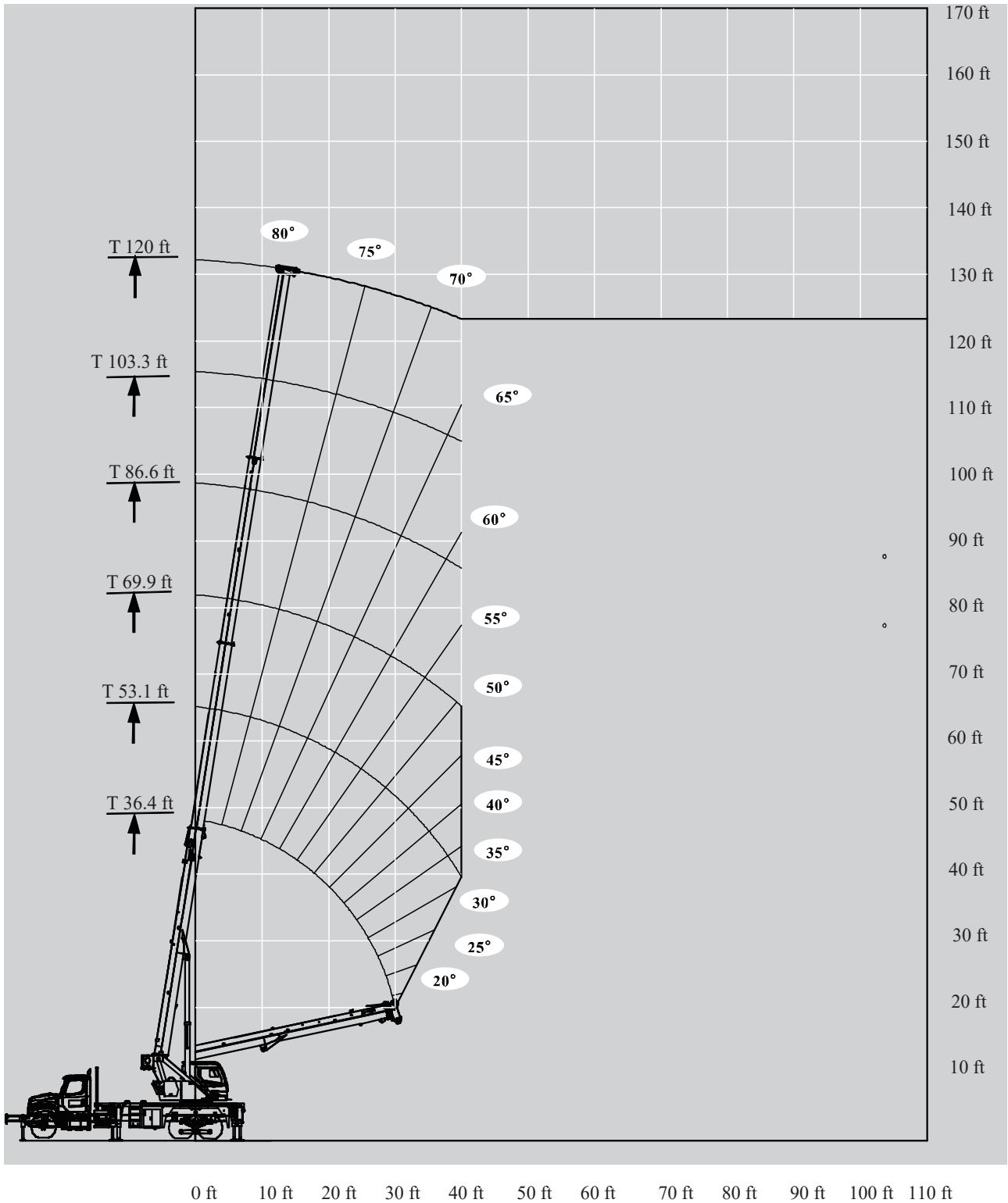
# WORKING RANGE DIAGRAM



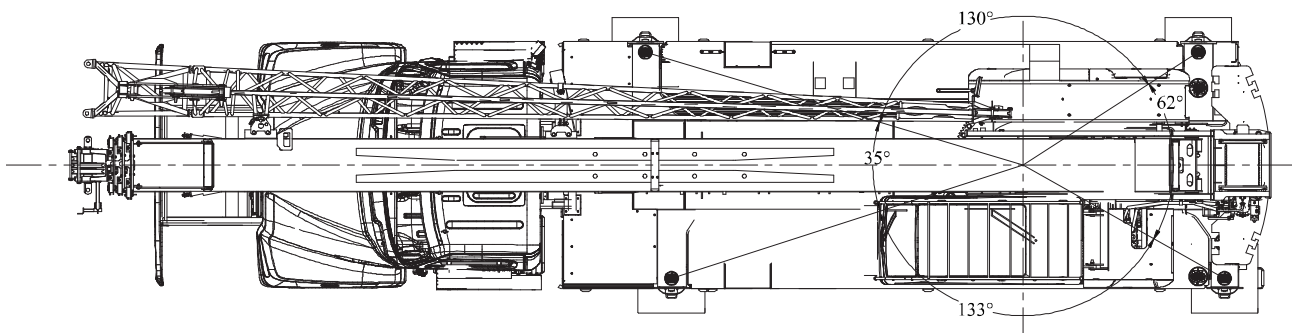
THIS CHART ONLY WHEN ALL OUTRIGGERS ARE FULLY- EXTENDED

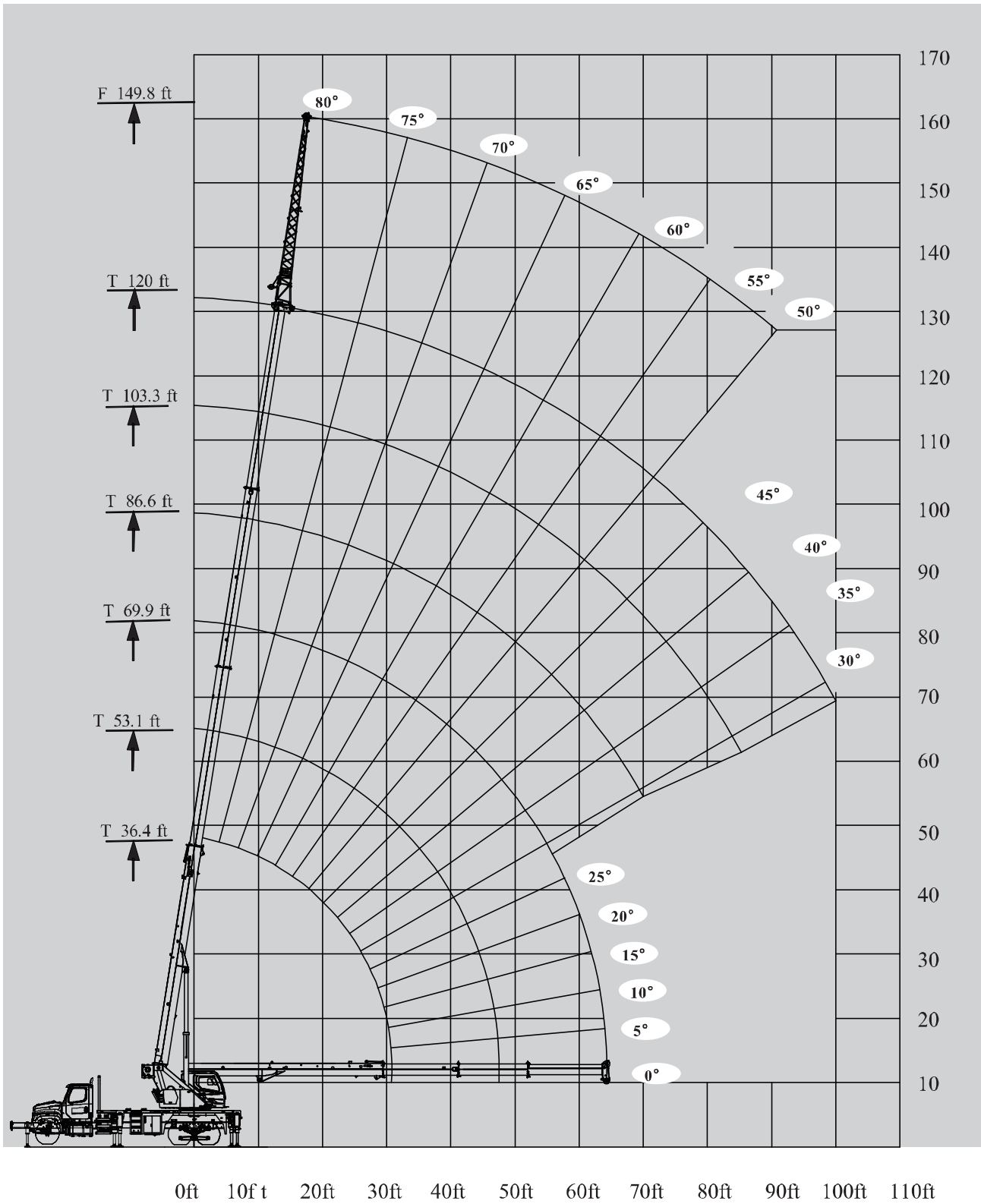


# WORKING RANGE DIAGRAM



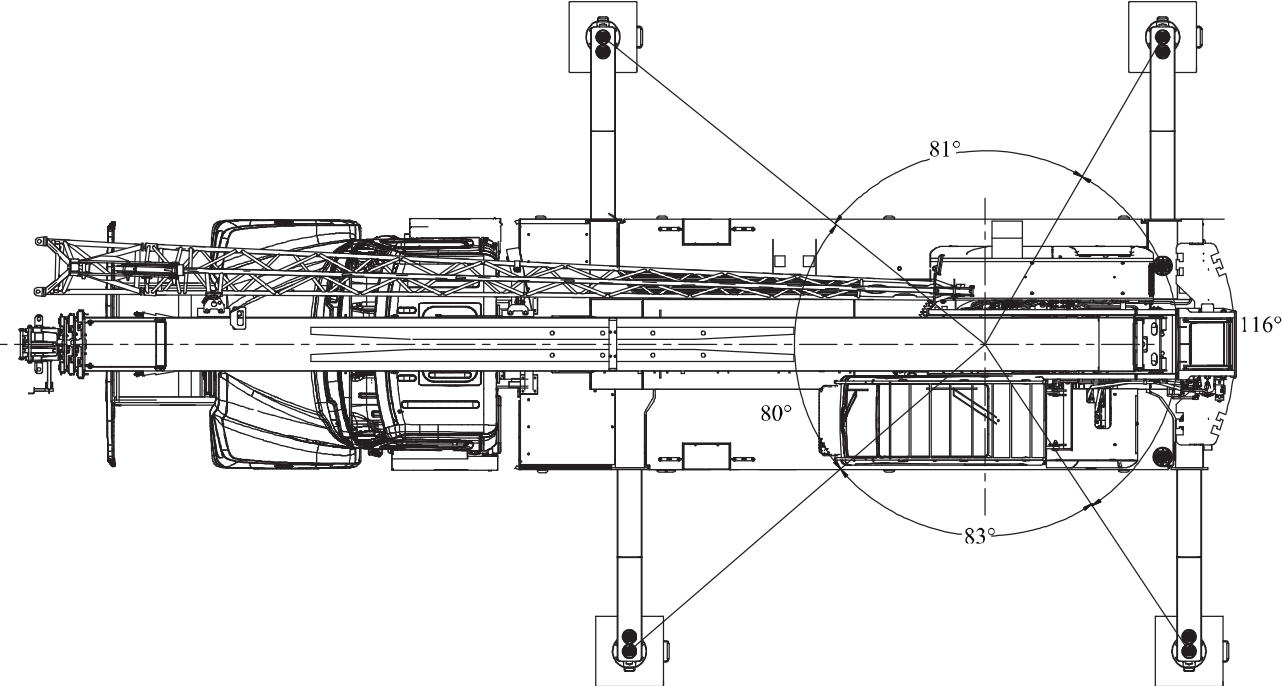
THIS CHART ONLY WHEN ALL OUTRIGGERS ARE FULLY-RETRACTED





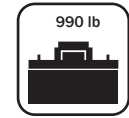
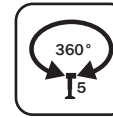
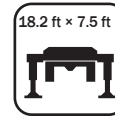
# WORKING AREAS



THIS CHART ONLY WHEN ALL OUTRIGGERS ARE FULLY- EXTENDED



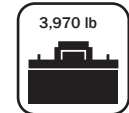
# LOAD CHARTS



## T 36-120 ft



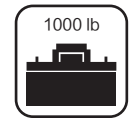
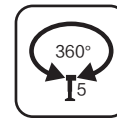
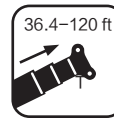
	36.4 ft	53.1 ft	69.9 ft	86.6 ft	103.3 ft	120.1 ft	
5.9 ft	70,000						5.9 ft
7.9 ft	29,570						7.9 ft
9.8 ft	18,100	18,980					9.8 ft
12.1 ft	12,590	13,250					12.1 ft
15.1 ft	9,060	9,700	9,700	10,360			15.1 ft
20.0 ft	5,070	5,730	5,950	6,170	6,170		20.0 ft
24.9 ft	3,090	3,530	3,750	3,970	3,970	4,190	24.9 ft
29.9 ft	1,540	2,200	2,430	2,430	2,650	2,650	29.9 ft
35.1 ft		1,320	1,540	1,540	1,760	1,760	35.1 ft
Deductions for stowed fixed jib	530	370	290	220	200	150	Deductions for stowed fixed jib



## T 36-120 ft



	36.4 ft	53.1 ft	69.9 ft	86.6 ft	103.3 ft	120.1 ft	
5.9 ft	70,000						5.9 ft
7.9 ft	33,970						7.9 ft
9.8 ft	21,190	22,000					9.8 ft
12.1 ft	14,770	15,450					12.1 ft
15.1 ft	11,020	11,680	11,930	12,150			15.1 ft
20.0 ft	6,390	7,050	7,280	7,500	7,500		20.0 ft
24.9 ft	3,970	4,410	4,850	4,850	5,070	5,070	24.9 ft
29.9 ft	2,430	2,870	3,310	3,310	3,530	3,090	29.9 ft
35.1 ft		1,980	2,200	2,200	2,430	2,430	35.1 ft
40.0 ft		1,100	1,320	1,540	1,540	1,540	40.0 ft
Deductions for stowed fixed jib	530	370	290	220	200	150	Deductions for stowed fixed jib

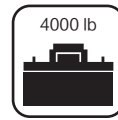
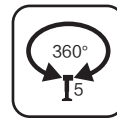
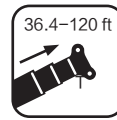
**T 36.4~120 ft**





	36.4 ft	53.1 ft	69.9 ft	86.6 ft	103.3 ft	120.0 ft	
6.0	70000						6.0
8.0	55160						8.0
10.0	41260	28910					10.0
12.0	38610	28910					12.0
15.0	30890	28910	26700	18260			15.0
20.0	24710	25380	22730	16770	12760		20.0
25.0	19200	19860	19860	14780	11690	8030	25.0
30.0	14120	14780	15230	12070	9490	8030	30.0
35.0		11470	11920	10890	8830	7720	35.0
40.0		8830	9270	9240	7500	6400	40.0
45.0		7060	7280	7500	6620	6400	45.0
50.0			5960	6180	5960	5080	50.0
55.0			4850	5080	5080	4630	55.0
60.0				4190	4190	3740	60.0
65.0				3310	3530	3400	65.0
70.0				2870	2870	2700	70.0
75.0					2430	2430	75.0
80.0					1990	1990	80.0
85.0					1540	1540	85.0
90.0						1320	90.0
95.0						880	95.0
100.0						660	100.0
Deductions for stowed fixed jib	540	370	280	230	190	160	Deductions for stowed fixed jib

# LOAD CHARTS



## T 36.4~120 ft

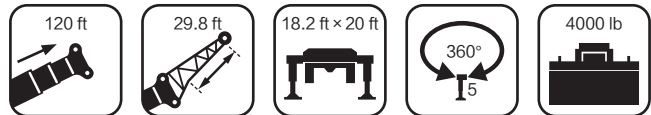




	36.4 ft	53.1 ft	69.9 ft	86.6 ft	103.3 ft	120.0 ft	
6.0	70000						6.0
8.0	55160						8.0
10.0	41260	28910					10.0
12.0	38610	28910					12.0
15.0	30890	28910	26700	18260			15.0
20.0	24710	25380	22730	16770	12760		20.0
25.0	20520	20960	19860	14780	11690	8030	25.0
30.0	15230	15890	16110	12070	9490	8030	30.0
35.0		12360	12580	10890	8830	7720	35.0
40.0		9930	10150	9240	7500	6400	40.0
45.0		7940	8380	7960	6620	6400	45.0
50.0			6840	7060	5960	5080	50.0
55.0			5520	5740	5080	4630	55.0
60.0				4850	4740	3740	60.0
65.0				3970	4050	3400	65.0
70.0				3310	3360	2700	70.0
75.0					2870	2650	75.0
80.0					2430	2340	80.0
85.0					1990	1970	85.0
90.0						1540	90.0
95.0						1320	95.0
100.0						1100	100.0
Deductions for stowed fixed jib	540	370	280	230	190	160	Deductions for stowed fixed jib

### T 120ft

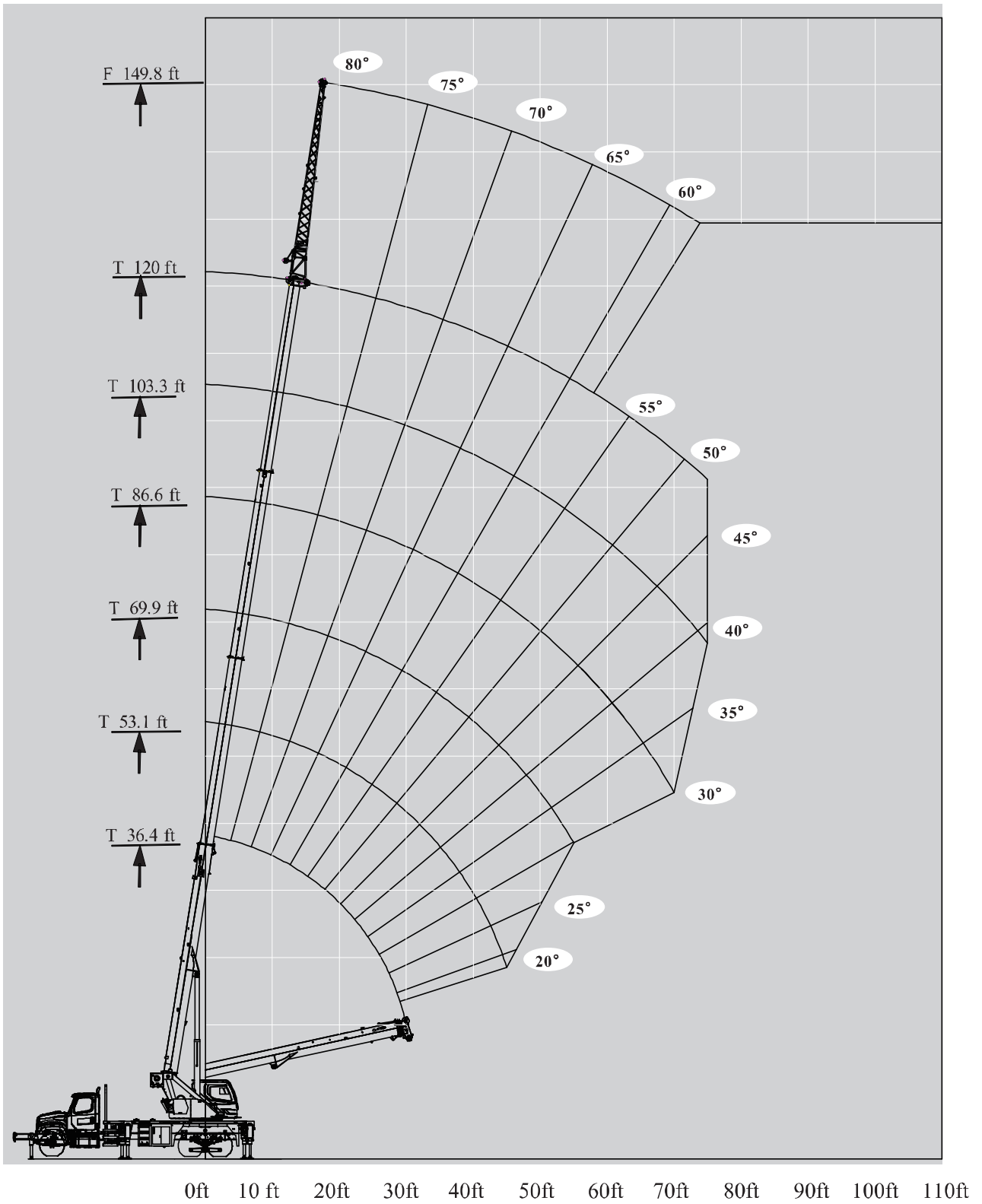


	120 ft			
	29.8 ft			
	0°	15°	30°	
80	3310	2870	2540	80
78	3090	2870	2430	78
76	3090	2870	2320	76
74	2980	2760	2100	74
72	2980	2760	1990	72
70	2980	2760	1880	70
68	2870	2650	1880	68
66	2870	2540	1880	66
64	2760	2320	1770	64
62	2430	1990	1650	62
60	2210	1770	1650	60
58	1770	1540	1320	58
56	1540	1320	1320	56
54	1320	1100	1100	54
52	1100	880	880	52
50	880			50

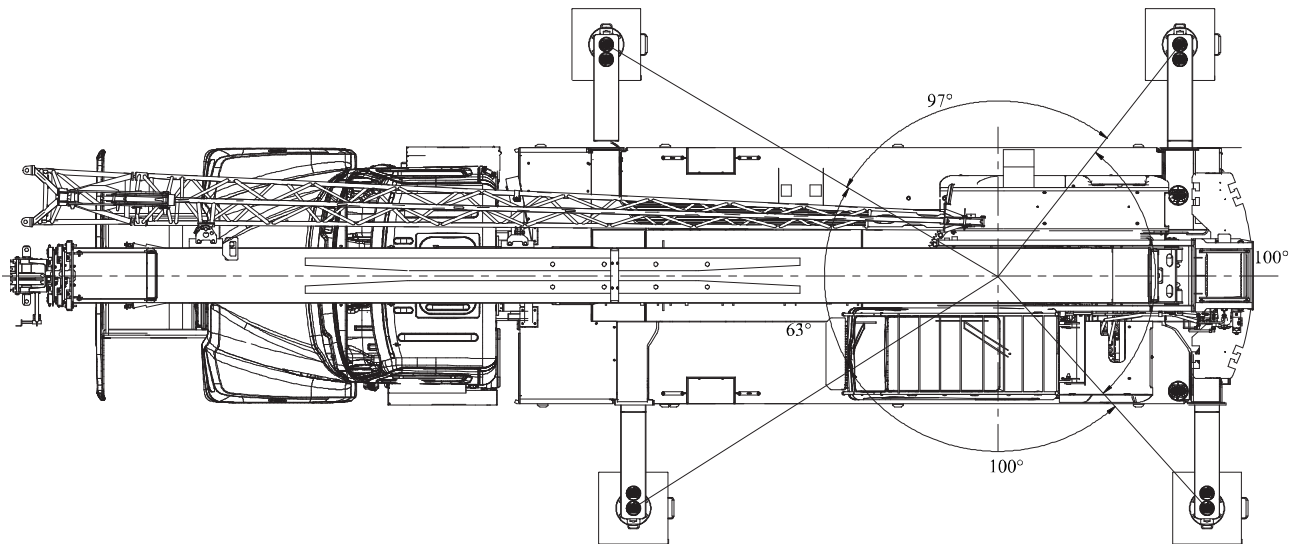


	120 ft			
	29.8 ft			
	0°	15°	30°	
80	3310	2870	2540	80
78	3090	2870	2430	78
76	3090	2870	2320	76
74	2980	2760	2100	74
72	2980	2760	1990	72
70	2980	2760	1880	70
68	2870	2650	1880	68
66	2870	2540	1880	66
64	2760	2320	1770	64
62	2540	1990	1650	62
60	2320	1770	1650	60
58	1990	1540	1320	58
56	1650	1430	1320	56
54	1430	1320	1210	54
52	1320	1210	990	52
50	1210			50

# WORKING RANGE DIAGRAM

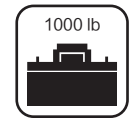
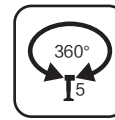
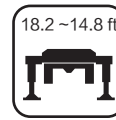
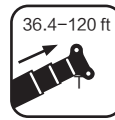




THIS CHART ONLY WHEN ALL OUTRIGGERS ARE IN HALF-EXTENDED POSITION



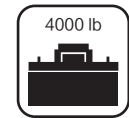
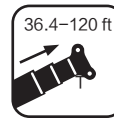
# LOAD CHARTS



## T 36.4~120ft



	36.4 ft	53.1 ft	69.9 ft	86.6 ft	103.3 ft	120.0 ft	
6.0	70000						6.0
8.0	55160						8.0
10.0	41260	28910					10.0
12.0	38610	28910					12.0
15.0	30890	28910	26700	18260			15.0
20.0	17430	18090	18530	16770	12760		20.0
25.0	11250	11920	12360	12360	11690	8030	25.0
30.0	7720	8380	8830	8830	9050	8030	30.0
35.0		6180	6400	6620	6840	6840	35.0
40.0		4630	4850	5080	5300	5300	40.0
45.0		3530	3750	3970	3970	4190	45.0
50.0			2870	3090	3090	3310	50.0
55.0			2210	2430	2430	2650	55.0
60.0				1770	1990	1990	60.0
65.0				1320	1320	1540	65.0
70.0					1100	1100	70.0
Deductions for stowed fixed jib	540	370	280	230	190	160	Deductions for stowed fixed jib

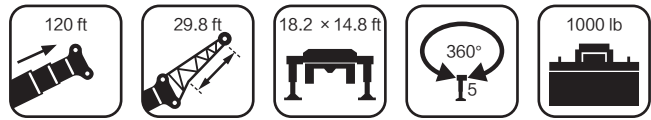
**T 36.4~120ft**





	36.4 ft	53.1 ft	69.9 ft	86.6 ft	103.3 ft	120.0 ft	
6.0	70000						6.0
8.0	55160						8.0
10.0	41260	28910					10.0
12.0	38610	28910					12.0
15.0	30890	28910	26700	18260			15.0
20.0	19860	20520	20960	16770	12760		20.0
25.0	13020	13680	13900	14120	11690	8030	25.0
30.0	9270	9710	10150	10370	9490	8030	30.0
35.0		7280	7720	7720	7940	7720	35.0
40.0		5520	5960	5960	6180	6180	40.0
45.0		4410	4630	4850	4850	4850	45.0
50.0			3750	3750	3970	3970	50.0
55.0			2870	3090	3090	3090	55.0
60.0				2430	2430	2650	60.0
65.0				1770	1990	1990	65.0
70.0				1320	1540	1540	70.0
75.0					1100	1320	75.0
Deductions for stowed fixed jib	540	370	280	230	190	160	Deductions for stowed fixed jib



# LOAD CHARTS

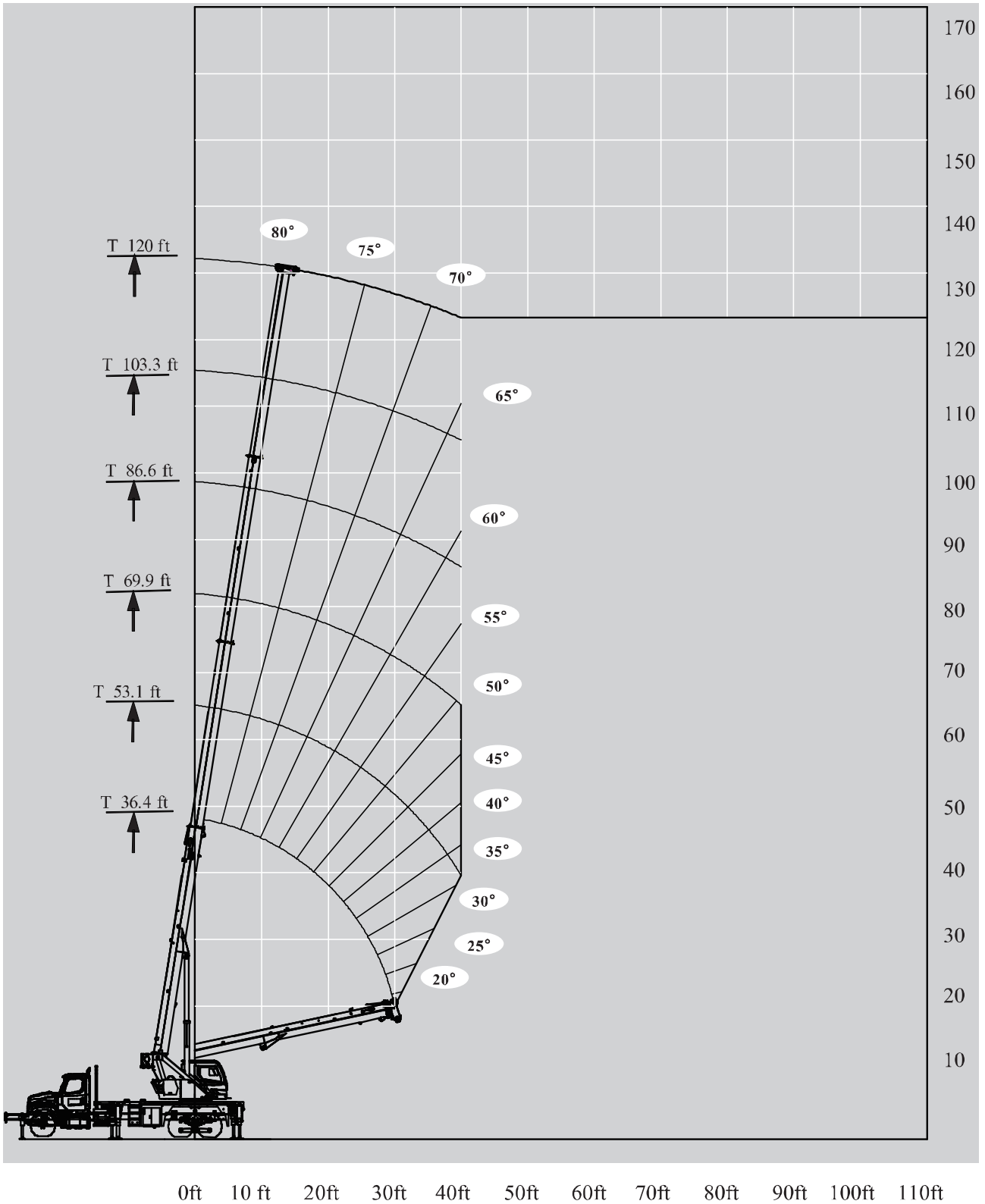
## T 120ft



	120 ft			
	29.8 ft			
	0°	15°	30°	
80	3310	2870	2540	80
78	3090	2870	2430	78
76	3090	2870	2320	76
74	2980	2760	2100	74
72	2980	2760	1990	72
70	2650	2430	1880	70
68	2210	1990	1770	68
66	1770	1540	1320	66
64	1320	1100	1100	64
62	1100	880	880	62
60	660			60

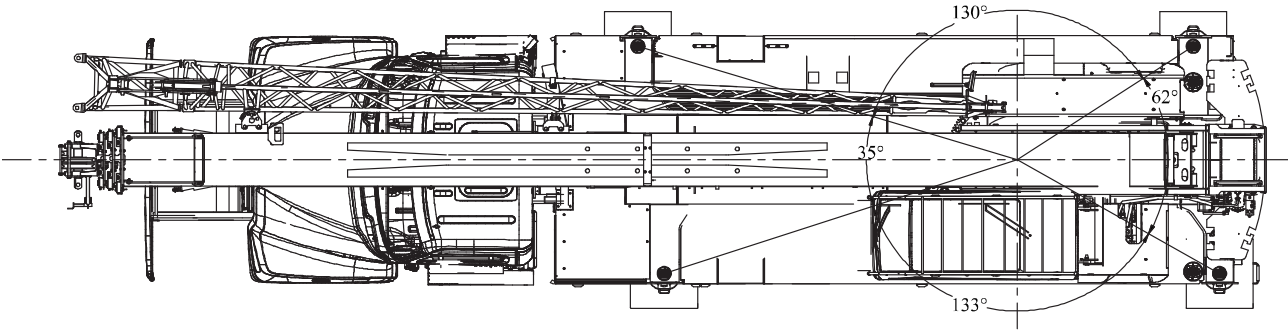


	120 ft			
	29.8 ft			
	0°	15°	30°	
80	3310	2870	2540	80
78	3090	2870	2430	78
76	3090	2870	2320	76
74	2980	2760	2100	74
72	2980	2760	1990	72
70	2980	2760	1880	70
68	2650	2430	1880	68
66	2210	1990	1770	66
64	1770	1540	1540	64
62	1540	1320	1100	62
60	1100	1100	880	60
58	880			58

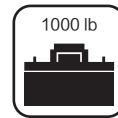
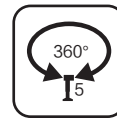
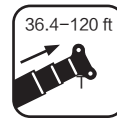




# WORKING AREAS

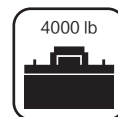
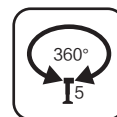
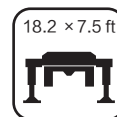
THIS CHART ONLY WHEN ALL OUTRIGGERS ARE FULLY-RETRACTED





### T 36.4~120ft



	36.4 ft	53.1 ft	69.9 ft	86.6 ft	103.3 ft	120.0 ft	
6.0	70000						6.0
8.0	29570						8.0
10.0	18090	18980					10.0
12.0	12580	13240					12.0
15.0	9050	9710	10150	10370			15.0
20.0	5080	5740	5960	6180	6180		20.0
25.0	3090	3530	3750	3970	3970	4190	25.0
30.0	1540	2210	2430	2430	2650	2650	30.0
35.0		1320	1540	1540	1770	1770	35.0
Deductions for stowed fixed jib	540	370	280	230	190	160	Deductions for stowed fixed jib



	36.4 ft	53.1 ft	69.9 ft	86.6 ft	103.3 ft	120.0 ft	
6.0	70000						6.0
8.0	34420						8.0
10.0	21180	22000□					10.0
12.0	14780	15450					12.0
15.0	11030	11690	11920	12140			15.0
20.0	6400	7060	7280	7500	7500		20.0
25.0	3970	4410	4850	4850	5080	5080	25.0
30.0	2430	2870	3310	3310	3530	3530	30.0
35.0		1990	2210	2210	2430	2430	35.0
40.0		1100	1320	1540	1540	1540	40.0
Deductions for stowed fixed jib	540	370	280	230	190	160	Deductions for stowed fixed jib